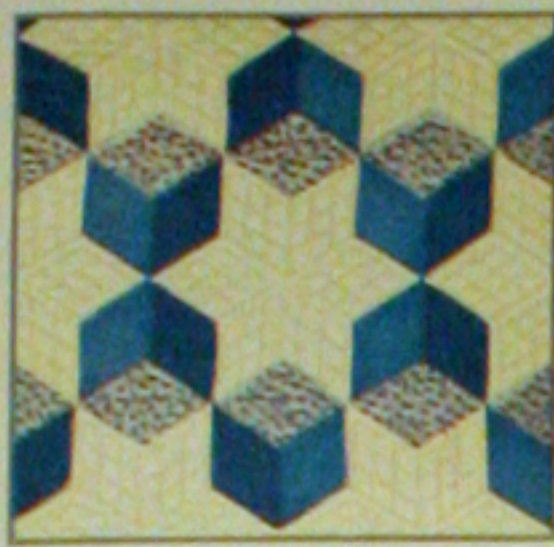




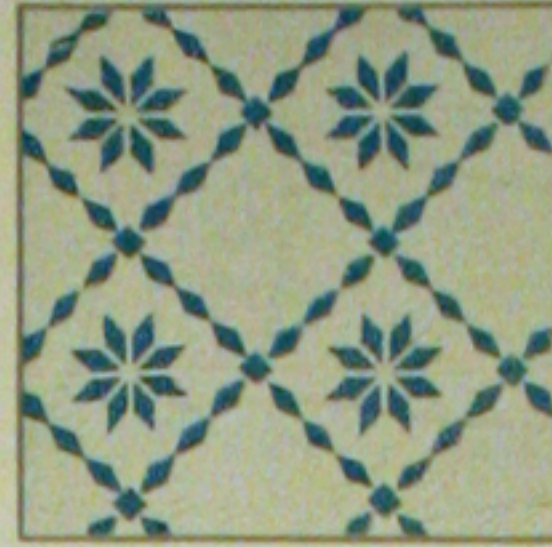
26-FLORAL WREATH



4-TUMBLING BLOCKS



103-DEW DROP



70-STAR BRIGHT



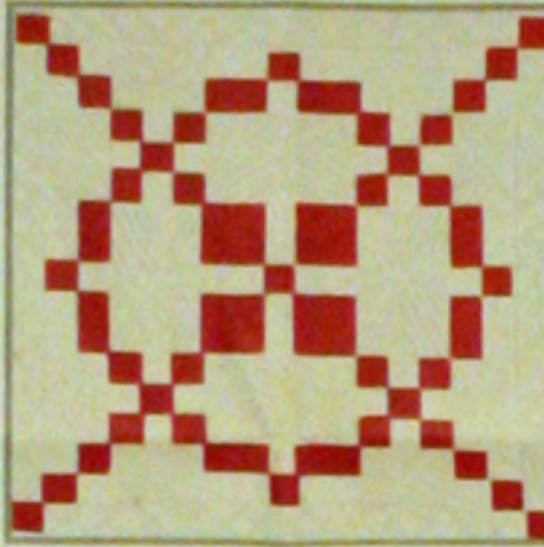
35-GRANDMOTHER'S FLOWER GARDEN



119-DADDY HEX



28-MARTHA'S VINEYARD



34-MOWSPUN



9-SUNFLOWERS



8-IRIS



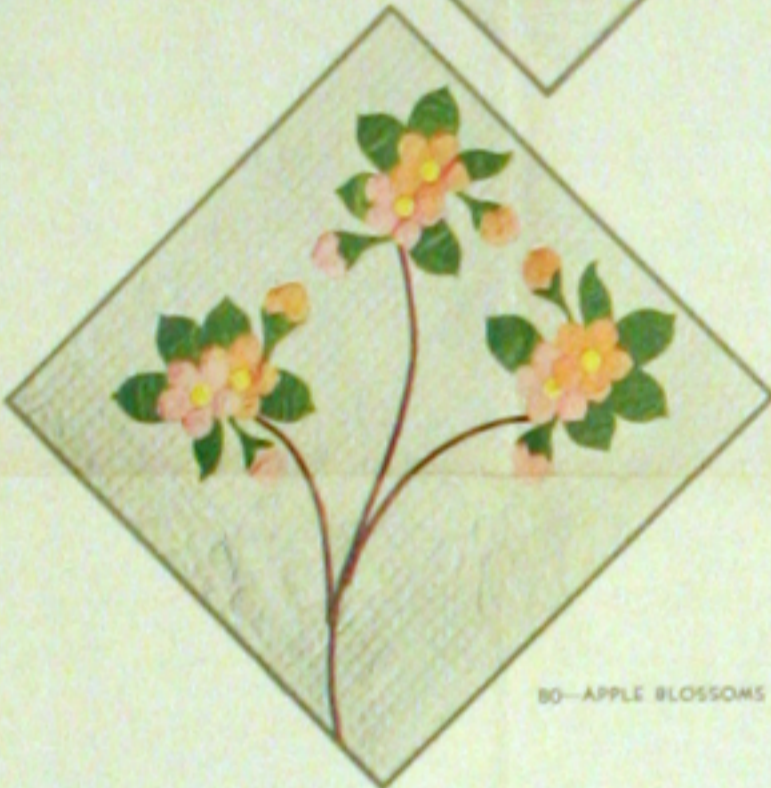
21-DOUBLE WEDDING RING



5-THE LONE STAR



100-STAR OF BLUEGRASS



80-APPLE BLOSSOMS



83-COUNTRY GARDENS

SAVE THIS WRAPPER

THERE IS A VALUABLE QUILT PATTERN ON THE REVERSE SIDE.

NOTE - Patterns for quilts shown on this wrapper and in our catalog may be ordered at a saving with the coupon which is printed below.

1 lb. 3 oz.

ONE SEAMLESS SHEET

FULL QUILT SIZE - 81 BY 96 INCHES

MOUNTAIN MIST

REG. U.S. PAT. OFF. AND IN CANADA

NEEDLE-EASY "GLAZENE"™ ALL COTTON FILLING

Uniform in Thickness • Does Not Stretch Thin • Makes a Quilt That Will Wash Beautifully

THE STEARNS & FOSTER COMPANY CINCINNATI OHIO 45215

ALL COTTON 100% NEW SAF MATERIAL GIRD REGISTRY No. 52



89-TURKEY TRACKS



3-NEW YORK BEAUTY



30-BORWOOD



30-BOSTON COMMONS



64-COUNTRY LANES



92-SPRING WREATH



29-OHIO ROSE



33-OSRESDEN PLATE



76-DAISY CHAIN



104-COLUMBINE



HOW TO ORDER PATTERNS

Printed on the other side of this wrapper you will find one of our famous quilt patterns. If it does not suit your needs we will be glad to send you your choice of any of the patterns illustrated in our free catalogue or on this wrapper at a cost of 20¢, each, with this coupon. The regular price of our patterns is 35¢.

Address: THE STEARNS & FOSTER CO., QUILT DEPARTMENT, Cincinnati Ohio 45215

COUPON

QUILT PATT

Bottom Panel
First Row
Fifth Row

Bottom Panel
First Row
Fifth Row

First Row
Fifth Row

Second Row
Fourth Row

MUSHROOM COUNTERPANE

Pattern No. 128 of the Mountain Mist® Series

(A Quilted Counterpane)

With the exception of the three small red mushrooms, this is an all-quilted counterpane. The background is of oyster white material.

Before you assemble the panels for the top of the quilt, tear off all of the selvage edges. Seam together two panels three yards long and 55½ inches wide—the long sides. Add to these joined panels a strip made —1¼ yards long, divided into three equal parts and seamed end to end measuring, finally, 12 inches by 108 inches. The completed top will then measure approximately 81 inches by 108 inches. Assemble the material for the back of the quilt in the same manner. This will leave about ¼ yard for the bias strips with which to bind the quilt.

Mark the Regimental Red mushrooms shown on the Diagram. Do this marking on the right side of the material, spaced far enough apart to allow for at least ¼ inch seams. Do not cut along these lines, but a seam's width outside of them. The pencil lines remain to show where to turn under the seams. Mark the Clay Beige spots as indicated and appliqué to the red mushrooms before appliquéing the entire unit to the top of the quilt.

To do the appliqué work, turn under the seams and baste. Place in the proper position and whip to the top of the quilt with fine shadow stitching, using thread matching the red for the mushrooms and beige for the spots.

Following the Diagram of the Quilt, mark the designs of the mushrooms in the proper panels. On the bottom, first and fifth panels, the red mushrooms will be appliquéed before the rest of the marking is done.

When the mushrooms are appliquéed and marked on the top of the quilt you are ready to mark the background quilting design. Rule the lines of the background quilting 1¼ inches apart each way, using a yard stick and a well sharpened soft pencil. Do not mark too heavily. Heavy lines will penetrate the material and be difficult to remove. Light pencil markings may be removed with art gum eraser, or will disappear with the first washing.

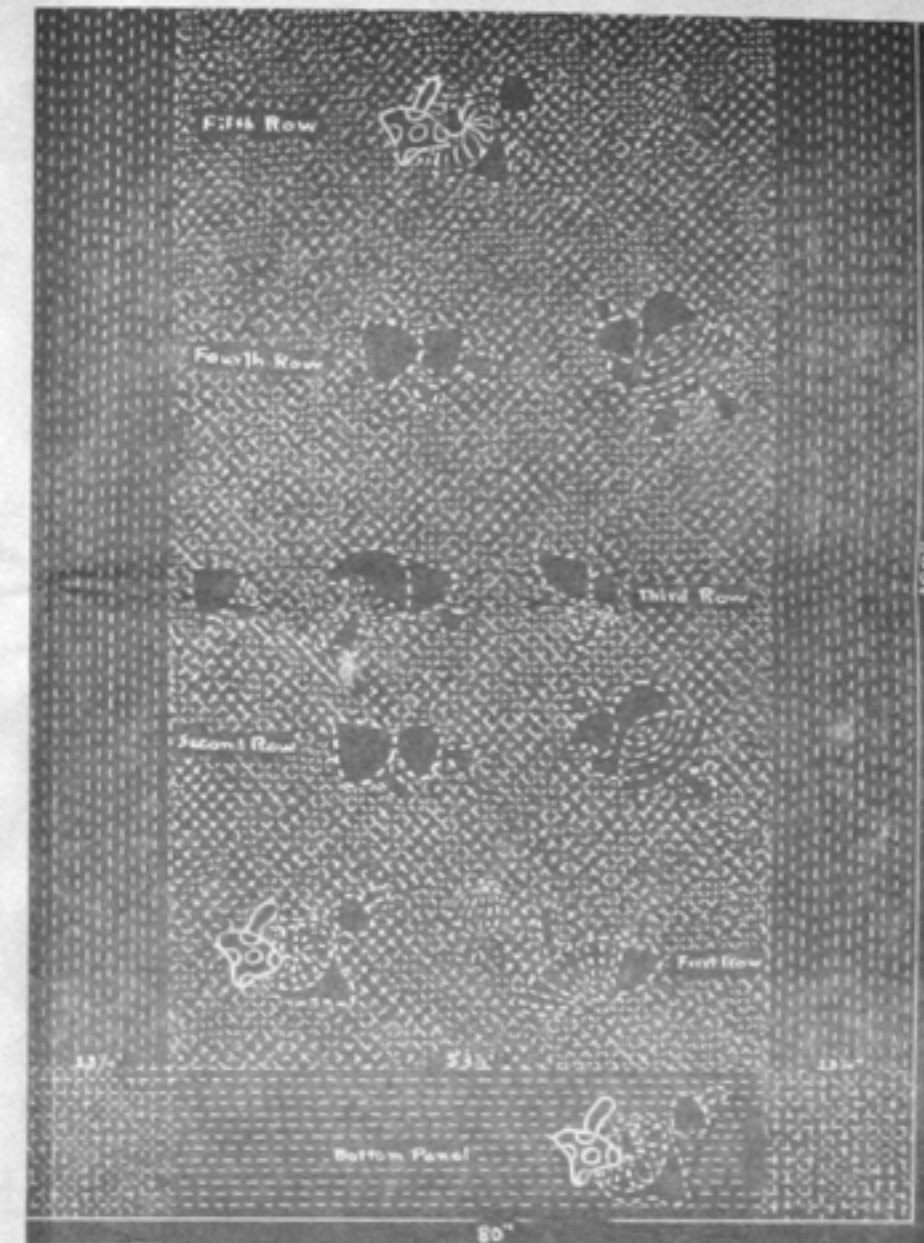
When the entire quilt has been marked it is ready for the actual quilting. First place the material for the back on the floor. Spread the Dacron® Batting over the backing evenly. Place the marked top over the Dacron® Batting. Start at the center of the quilt and baste to the edges. If you plan to use a quilting frame, these bastings may be 6 to 8 inches apart. If you plan to use a quilting hoop or to quilt on your home sewing machine, baste no more than 4 inches apart.

When the quilting is completed, cut off any ragged edges of batting and bind with a narrow bias binding of the same oyster white material. Cut your bias strips for binding 1½ inches wide. Fold in half and stitch to the right side of the material with the raw edges together. Fold the folded edge of the bias over the edge of the quilt and whip to the back. Be very careful not to stretch this bias binding.

NOTICE

Wrappers for Quilt Batting having working patterns for Quilts printed thereon are fully protected and are exclusive with The Stearns & Foster Company.

ALL RIGHTS RESERVED
THE STEARNS & FOSTER COMPANY
Lorain, Cincinnati, Ohio



YARDAGE CHART

Material 36" Wide

| | |
|--|-----------|
| OYSTER WHITE MATERIAL (for top, back and binding) | 14 yards |
| REGIMENTAL RED (for three mushrooms) | ¼ yard |
| CLAY BEIGE (for spots on red mushrooms) | 1/12 yard |