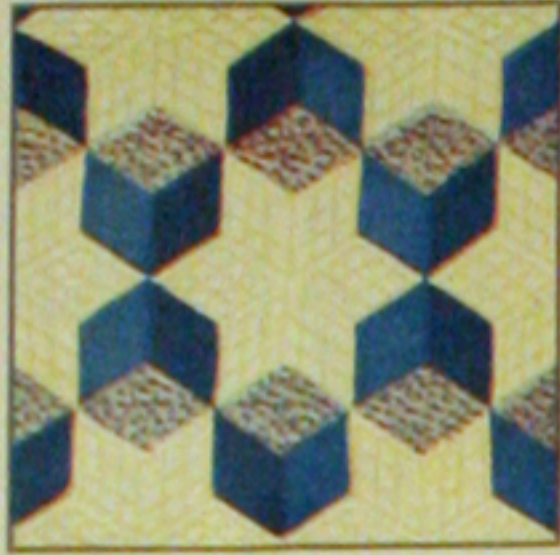


COLLECTION OF
 QUILT PATTERNS
 1930-1940
 ST. LOUIS, MO. 63101



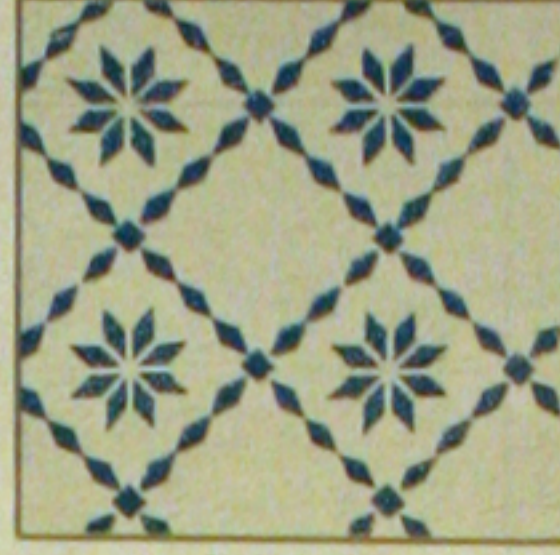
76 - FLORAL WREATH



4 - TUMBLING BLOCKS



102 - DEER DROP



70 - STAR BRIGHT



23 - GRANDMOTHER'S FLOWER GARDEN



119 - GIDDY HEX



28 - MARTHA'S VINEYARD



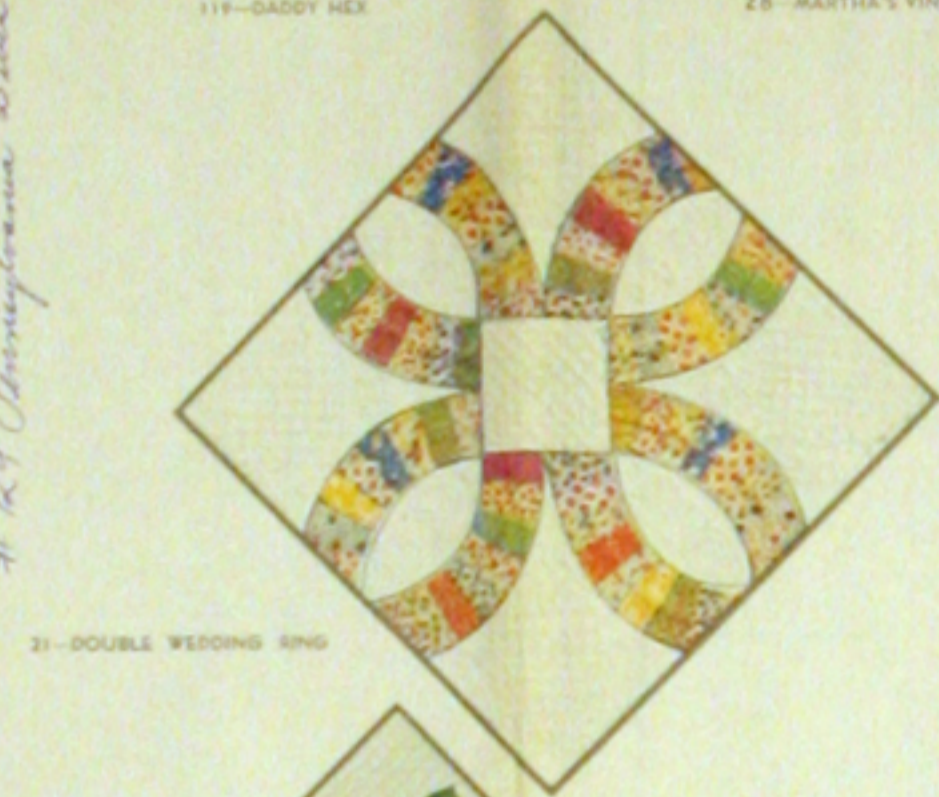
34 - HOPSUN



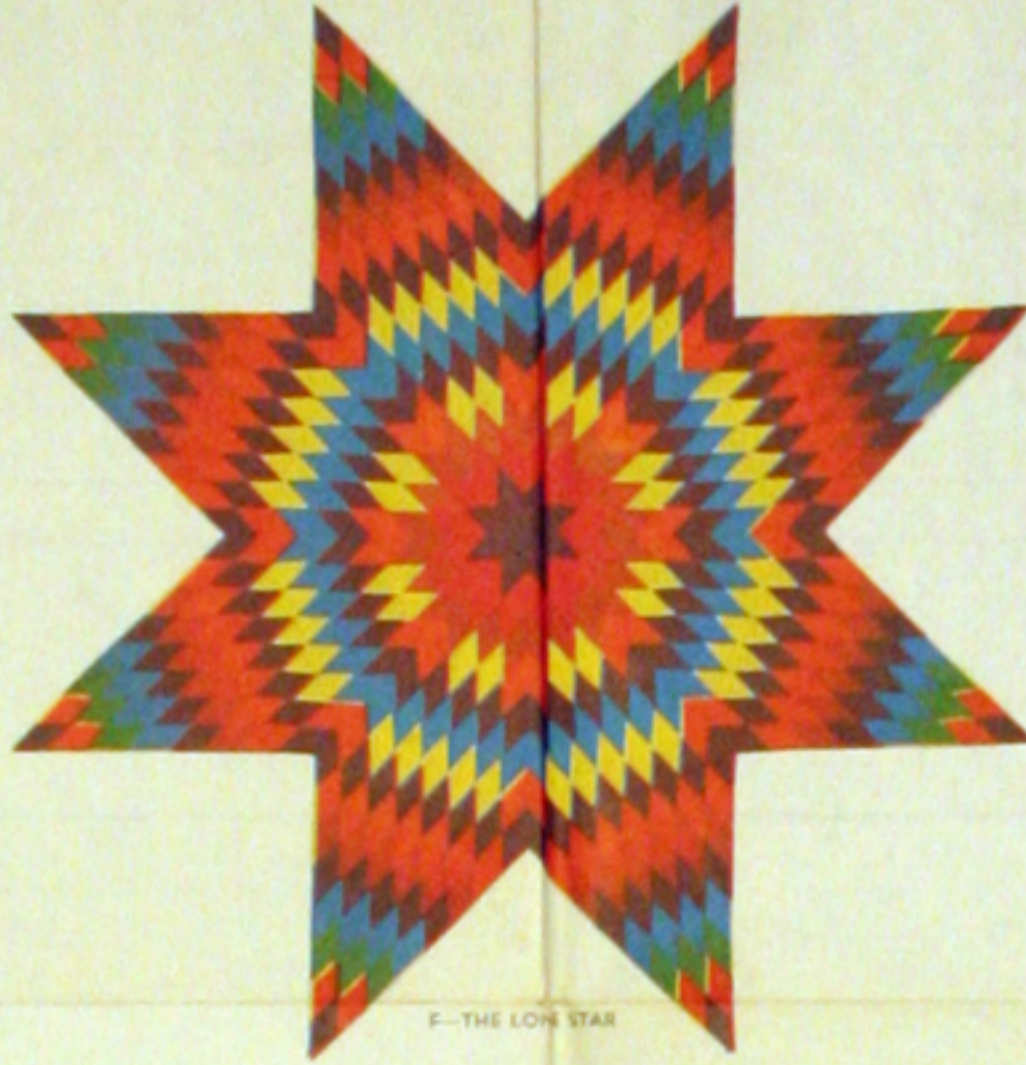
7 - SUNFLOWER



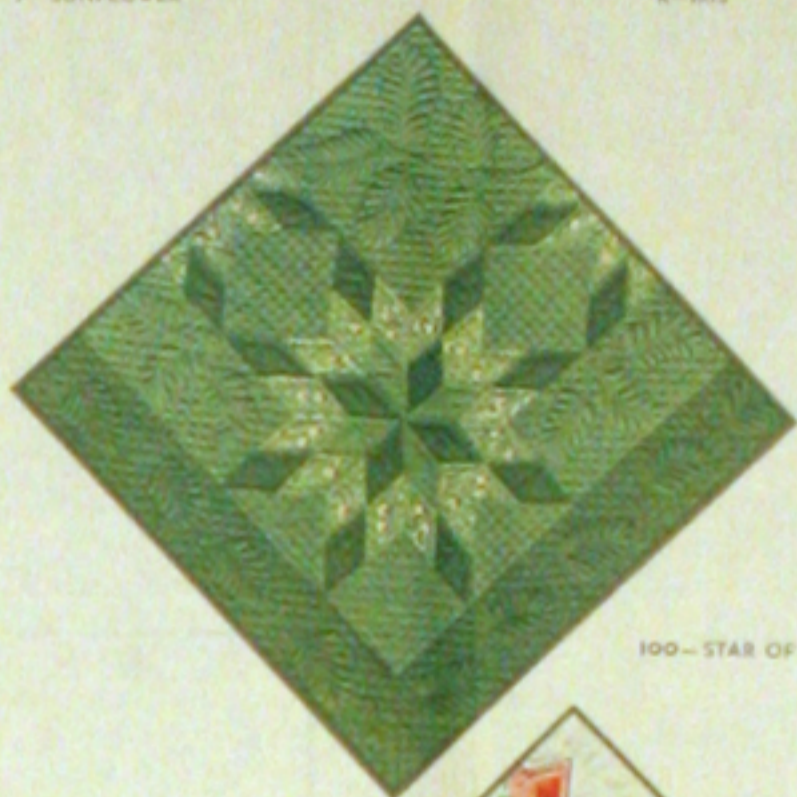
8 - IRIS



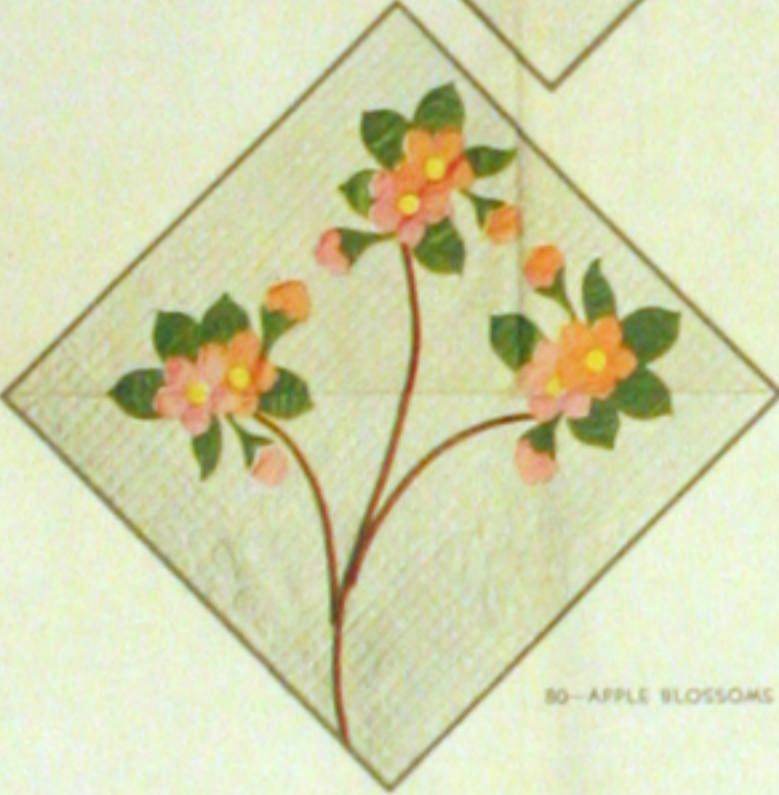
21 - DOUBLE WEDDING RING



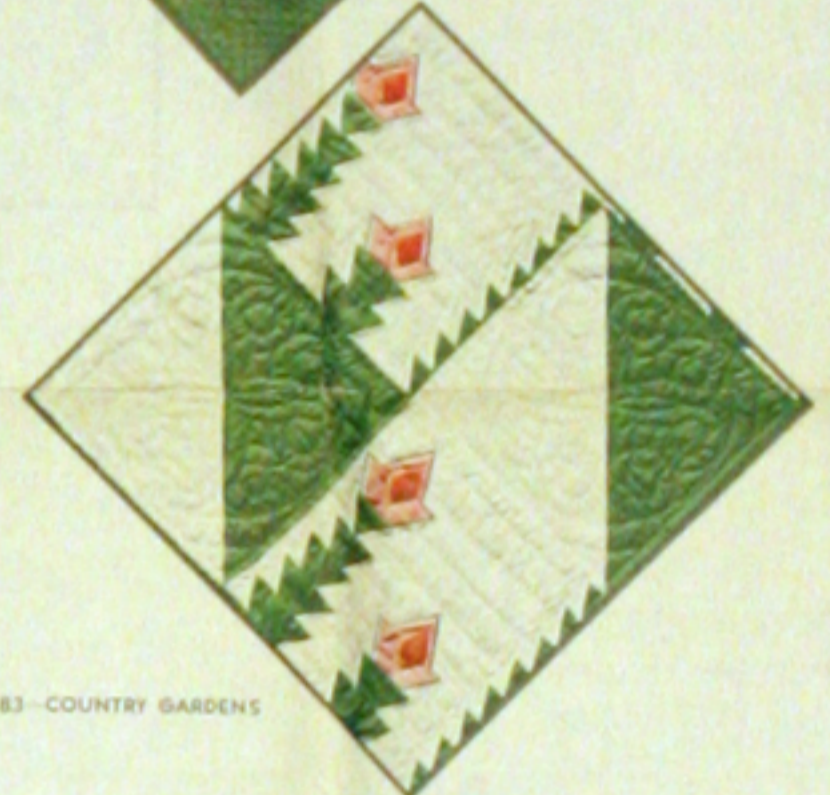
5 - THE LONE STAR



100 - STAR OF BLUEGRASS



80 - APPLE BLOSSOMS



83 - COUNTRY GARDENS

SAVE THIS WRAPPER
 THERE IS A VALUABLE QUILT PATTERN
 ON THE REVERSE SIDE.
NOTE - Patterns for quilts shown on this
 wrapper and in our catalog may be ordered at
 a saving with the coupon which is printed below.

Uniform in Thickness - One Seamless Sheet - Properly Quilted Will Wash Beautifully

NEEDLE-EASY "GLAZENE"™ ALL COTTON FILLING

MOUNTAIN MIST

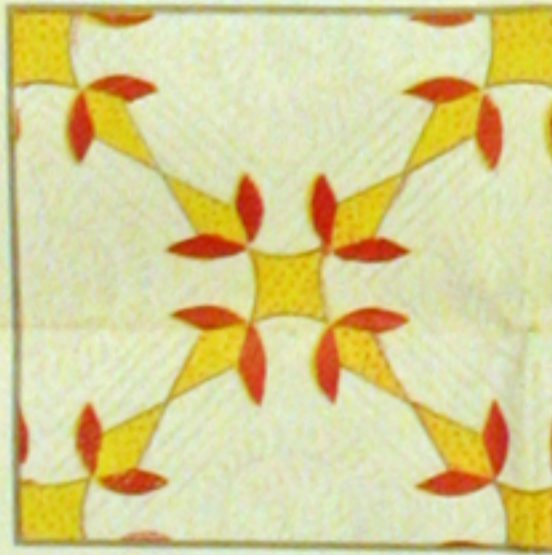
REG. U.S. PAT. OFF. AND IN CANADA

THE STEARNS & FOSTER COMPANY CINCINNATI OHIO 45215

Form 111-1972
 S & F CO.
 LITHO IN U.S.A.

FULL QUILT SIZE - 81in. x 96in.

ALL NEW MATERIAL
 CONSISTING OF
 100% COTTON
 OHIO REGISTRY NO. 52
 RN 19002



25 - TURKEY TRACKS



2 - NEW YORK BEAUTY



39 - POPCORN



30 - BOSTON COMMONS



66 - COUNTRY LANES



93 - SPRING WREATH



10 - OHIO ROSE



75 - DRESDEN PLATE



76 - DAISY CHAIN



106 - COLUMBINE



103 - SUNBURST



94 - ODDS AND ENDS



112 - POPPY WREATH

HOW TO ORDER PATTERNS

Printed on the other side of this wrapper you will find one of our famous quilt patterns. If it does not suit your needs we will be glad to send you your choice of any of the patterns illustrated in our free catalogue or on this wrapper at a cost of 30¢, each, with this coupon. The regular price of our patterns is 50¢.

THE STEARNS & FOSTER CO., QUILT DEPARTMENT D, Cincinnati Ohio 45215

PLEASE SEND ME _____ PATTERNS @ 30¢ EA. AMOUNT ENCLOSED \$ _____
 PATTERN NUMBERS DESIRED _____ TWO STAMPS PLEASE!

NAME (PLEASE PRINT) _____
 ADDRESS _____
 CITY _____ STATE _____ ZIP _____

QUILT PATTERN COUPON **QUILT PATTERN COUPON**

THIS OFFER SUBJECT TO WITHDRAWAL WITHOUT NOTICE

PATTERN No. 129 PENNSYLVANIA DUTCH



PENNSYLVANIA DUTCH QUILT — No. 129 APPLIQUE

These quilt designs are taken from the various Pennsylvania Dutch Barn Max Signs. Each have a different meaning. These (12) different blocks combine three favorite motifs used in the early 19th century — tulips, leaves and birds. Since the Pennsylvania Dutch usually combined galsley or calico prints and vivid colors, this is a typical design for this period. To the right is a diagram of the quilt top giving the dimensions and showing how to set the blocks together. On the second page are actual size patterns for making the quilt blocks along with the quilting design.

- DESIGN VI — 19 Leaves Around the Circle 1/2 yard each color or print
- 2 Center Red Hearts (color already figured in original red amount) 1/2 yard
- 2 Center Hearts — Print 1/2 yard
- DESIGN VII — Hearts — Red color already figured 1/2 yard each color
- 6 Colors for large painted leaves 1/2 yard each color
- DESIGN VIII — Hearts and Leaves 1/2 yard
- Clover and Birds 1/2 yard
- Wings (Print Fabric) 1/2 yard
- DESIGN IX — 3 Painted Star (two colors) 1/2 each color 1/2 yard
- DESIGN X — 7 Painted Star — (two colors) 1/2 yard each color
- DESIGN XI — 12 Painted Max (6 each color) 1/2 yard
- Center — 1/2 yard
- DESIGN XII — 6 Leaves each a different color (Print) 1/2 yard each
- DUTCH BOY & DUTCH GIRL AT THE TOP OF THE QUILT 1/2 yard plain (Fabric) and 1/2 yard printed (Fabric)

BEGINNING DIRECTIONS —

READ THE DIRECTIONS BEFORE CUTTING

The following directions are for a 90" x 108" Long Finished Quilt.

1. Make a cardboard pattern for each of the parts and then glue the piece of cardboard to a fine piece of sandpaper.

Each part given on our pattern sheet has the seam allowance shown (1/4") so in cutting out your patterns be sure and cut on the proper line in order not to cut away the given seam allowance. It is suggested that you do each square completely before starting on the next.

Each of the (12) Max Squares will be handled individually so if you wish to repeat the use of a piece of fabric you will have to total it together for yardage requirements.

YARDAGE FOR THE TOP — SIDES — SQUARES — BACK

White is suggested and is figured on 36" material for the top 9 yards
 NOTE!! — The seam allowance is not figured in on the 18" sides, top and squares; so be sure you allow 1/4" seam allowance on all pieces. (Example — the side strip should be 18 1/4" wide, 18 1/4" each square and etc.) That is the reason for the material need for the squares being 9 yards
 Quilt Back 9 yards

Red for around the circles in each 18" Square — It is to be cut on the bias — for all 12 squares, plus the extra red pieces used in some of the Max Signs 4 yards
 If there is any doubt about the fastness of color, or if there is a possibility of shrinkage, first wash and iron the goods. If the top is washed before quilting, also shrink the material for the quilt back.

EACH OF THE TWELVE SQUARES GIVEN — YARDAGE:

18 1/4" Square (1/4" is seam allowance)
 Calculated for Material 36" Wide.
 2 1/2" wide strip — approximately 53" long on the bias. This is your outline zig-zag design around each circle.

NOTE!!! — Below yardage is given and you can double up on yardage and use the same material 3 or 4 times in the quilt, in different locations.

CHECK CHART FOR LOCATION NUMBERS ON THE DIAGRAM PAGE

- DESIGN I — 12 Painted Star Large 1/2 yard
- 12 Painted Star Small 1/2 yard
- 1 Large Center 1/2 yard
- DESIGN II — Tulips 1/2 yard
- Stem and Leaves 1/2 yard
- Bird 1/2 yard
- Wing 1/2 yard
- DESIGN III — 18 Painted Flower 1/2 yard
- 1 Stem 1/2 yard
- Leaves 1/2 yard
- Center 1/2 yard
- DESIGN IV — 4 Large Flowers or Leaves 1/2 yard
- 4 small Acorns 1/2 yard
- 6 centers 1/2 yard each
- Red circle already figured in red fabric.
- DESIGN V — Red Hearts and Red Tulips — Already formed in original red amount
 Stem (print) 1/2 yard
 Big Tulip (Red Print) 1/2 yard
 Center Print 1/2 yard

ASSEMBLING INFORMATION —

It is suggested that you do each of the 12 blocks separately. The following example can be handled for each block:

Example: Cut your block 18 1/4" square — (The extra 1/4" is for your seam allowance.) Then refer to your pattern page for the pieces that belong to square #1 and etc. Also it is suggested at the same time you refer to your diagram on page 1 in order to properly lay out your design. Be sure to outline each design with the zig-zag outer outline. It is suggested that you use some object to form your circle within your square as a guideline for your zig-zag outline. We also suggest using dressmakers carbon paper for marking the outlines along with marking any quilting designs.

CUTTING OUT FABRIC —

To cut the fabric, lay the pattern over it and trace around the outside edges with a soft lead pencil. Cut out the various pieces and separate them according to their locations on the square piece. Iron out all wrinkles before you begin to cut. Turn down edges on each piece 1/4" and crease them in place with your thumb and forefinger. For corners and sharp turns, make small cuts or notches about 1/8" deep to keep the outline of the design from stretching.

Baste the edges as you turn them, then press flat with a warm iron. Since the basting stitches have to be removed, make the knot of the thread on top of the piece, so you can pull the thread out easily. You are now ready to assemble the various pieces in the center of the 18" block to form the design.

You are now ready to sew the pieces to the background material or blocks. Use a short needle #8 or #9 and make small hemming or slip stitches, with the longer part of the stitch on the wrong side. Barely catch the edge of the piece of fabric with your needle so that the stitch does not show. Sew down the pieces first that go under the other parts of the design using thread the same color as the fabric. In basting the bias strip, such as the zig-zag outline, baste it first on the inside edge. You can then stretch the material out until it lies flat along the outer edge without gathering. When you have finished the sewing on each block, press the block on its underside with a warm iron. Use a soft pad or towel under the block, while pressing it. This is done to keep the design from flattening.

EMBROIDERY WORK —

The following items are to be embroidered and we suggest using the chain stitch—example shown . . .

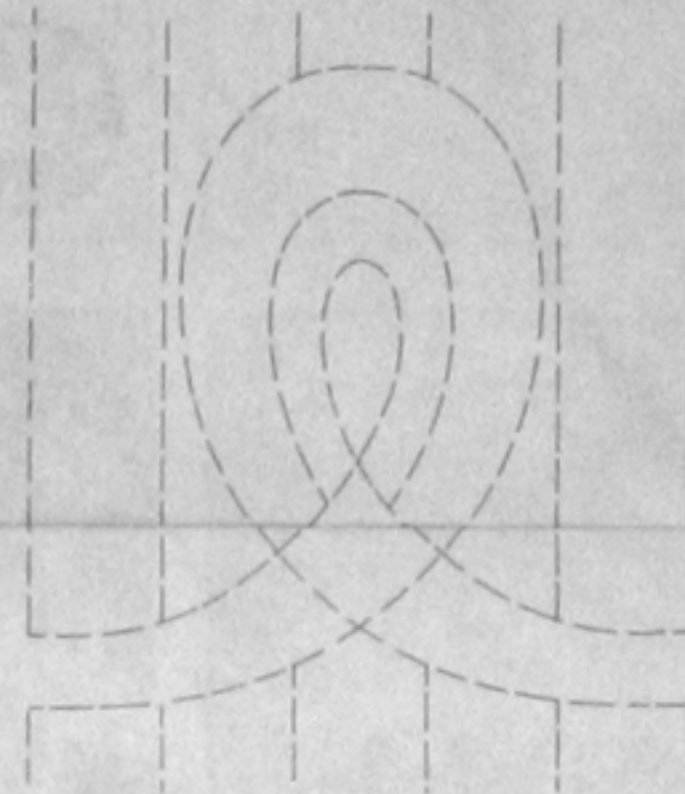


CHAIN STITCH — HOLD THE LOOP DOWN WITH THE LEFT THUMB UNTIL IT IS CAUGHT BY THE NEXT STITCH. USE AS A DECORATIVE BORDER STITCH AND AS A PADDING FOR SATIN AND BUTTON HOLE STITCH.

DUTCH BOY and GIRL at top of Quilt. The bands on their hats, the tulips in each of their hands and the legs of his trousers. Number II — Bird's beaks and tail feathers. Number V — Top of big tulip. Number VI — 16 spurs in all. Number VII — The inside circle which the leaves branch off from is all embroidery. Number VIII — The 3117 on the head of the birds — the stem of the center clover and the stems for all the leaves on the bottom plus the line for the birds to stand on. Number XII — The veins of each of the six leaves and stems.

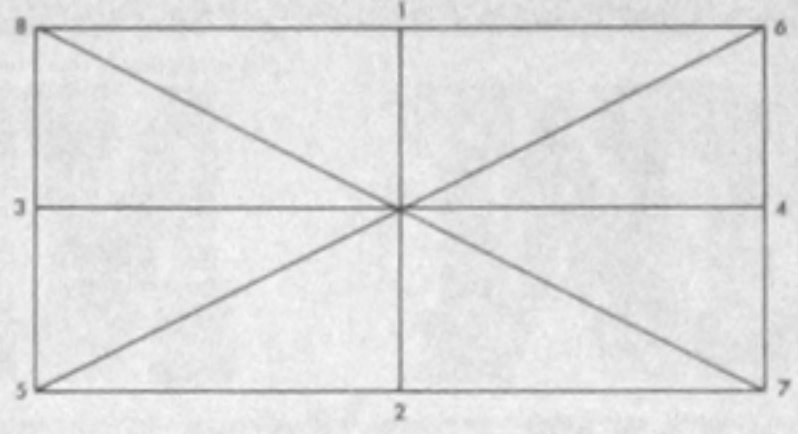
After you have completed all (12) squares as above, you are now ready to join them together forming the center of the quilt. Join them in the same order as per your diagram using the 1/4" seam allowance. After you have completed the above, join the 18" sides and 18" top and 18" bottom pieces. You have now completed your top. You are now ready to mark your top with the quilting design, using the design given, or one of your own.

QUILTING DESIGN



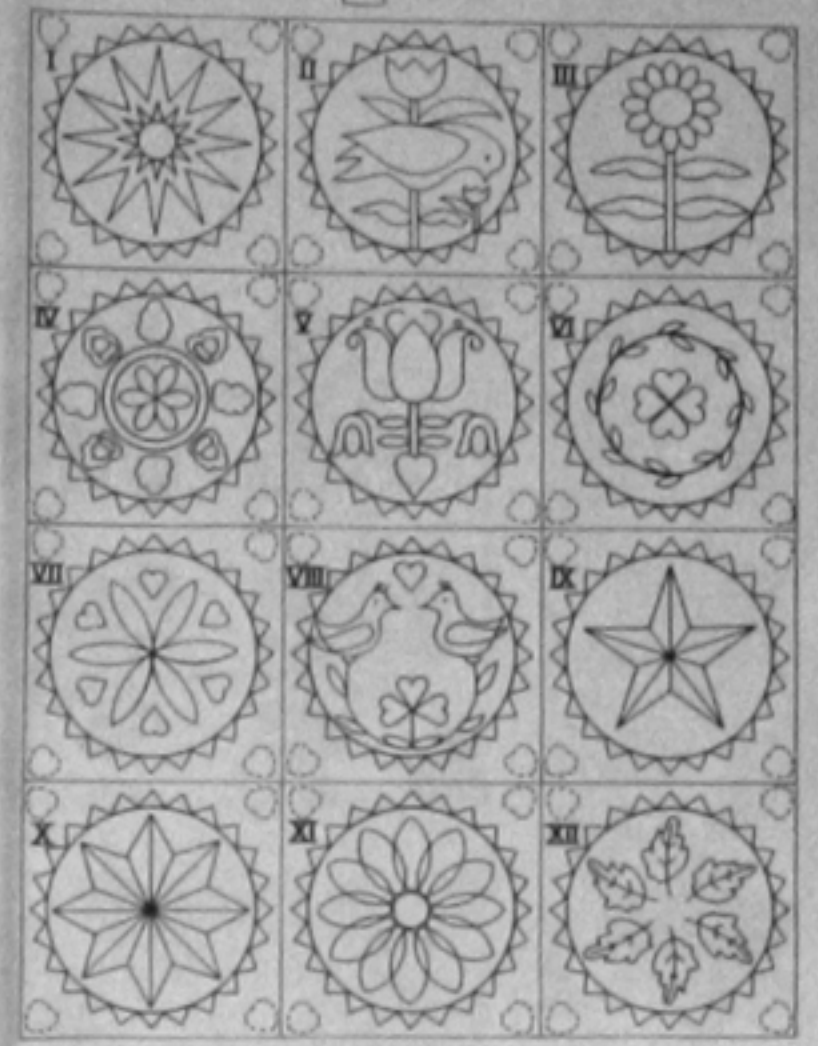
Each design is outlined in all 12 squares along with the zig-zag outline in each 12 squares. The hearts shown on the diagram page are also quilted.

Use dressmakers carbon paper to trace your design from the design page. You now join the top with the center which is your Mountain Mist Dacron or Cotton batting, and then the back. We suggest that you baste all three thicknesses together in the following manner:



Baste from one side #1 to #2. Top to bottom #3 to #4, #5 to #6 and #7 to #8 and then all around all four sides on the outer edges. You have now securely anchored all (three) pieces together and you are now ready to start your quilting, following your already marked quilting lines. We suggest trying to quilt your design as small as possible trying for 8 or 9 stitches to an inch. NOTE!!! You do not need a quilting frame or hoop if you securely baste your quilt, per the directions given above.

FINISHING — After you have completed your quilting you are now ready to bind the edges. You can make a scalloped design (by using the top half of a plate) or you can leave it straight. You will now need approximately 12 yards of bias fabric to go around this quilt measuring 90 x 108 inches.



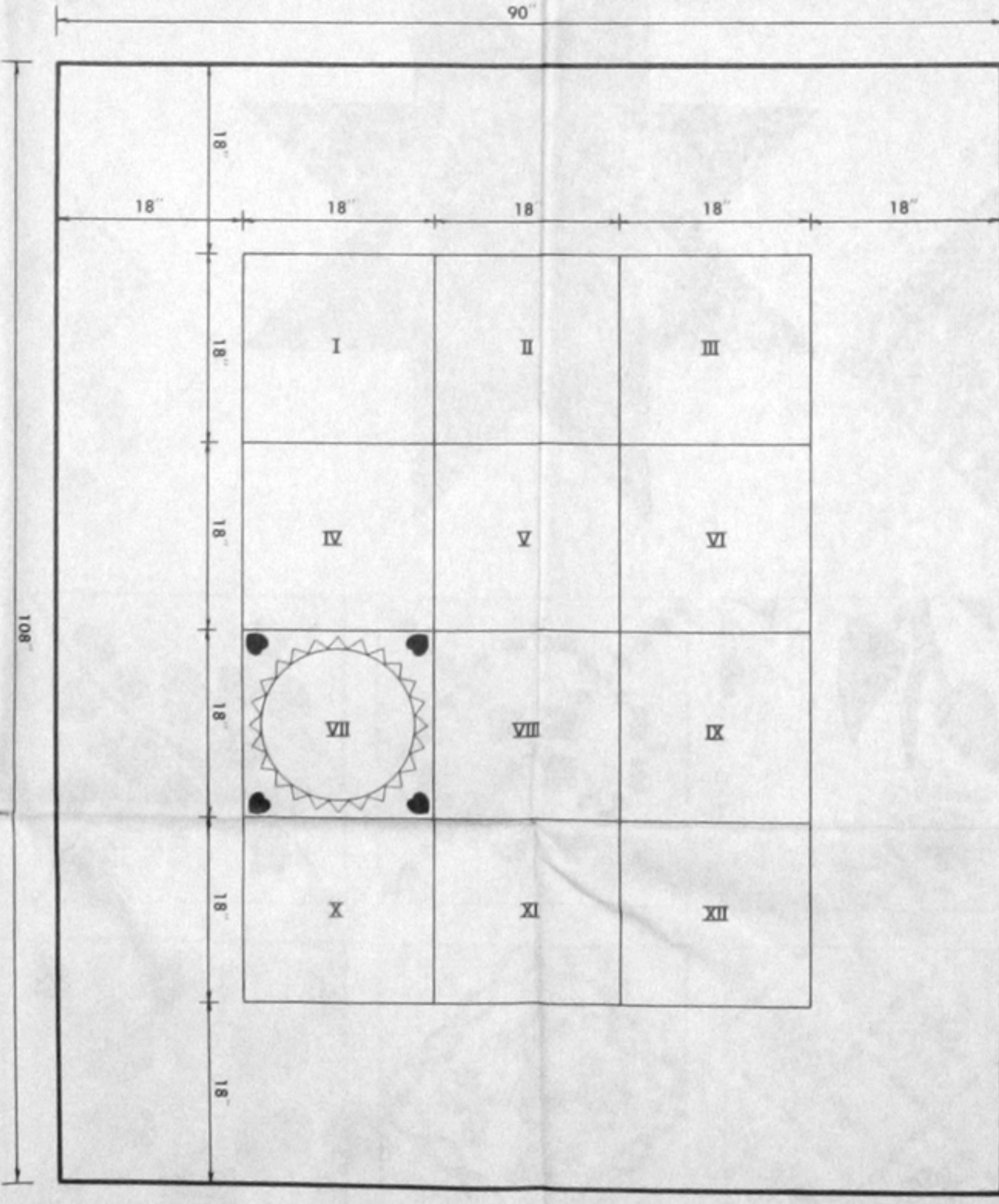
QUILT PATTERN COUPON

HOW TO ORDER PATTERNS
 Provided on the other side of this envelope you will find one of our famous quilt patterns. If it does not suit your needs we will be glad to send you your choice of any of the patterns illustrated in our free catalogue or on this envelope at a cost of 35¢, each, with this coupon. The regular price of our patterns is 50¢.

Address: **THE STEARNS & FOSTER CO.,** Quilt Department, Cincinnati, Ohio 45215

My Name: _____
 My Address: _____
 My City: _____
 My State: _____
 My Zip: _____

THIS OFFER SUBJECT TO WITHDRAWAL WITHOUT NOTICE



NOTE: ADD 1/4" SEAM ALLOWANCE ON ALL SIDES. CHECK YOUR DIRECTIONS BEFORE CUTTING TOP.
 ONE SMALL DESIGN IN CENTER OF DUTCH BOY AND GIRL.