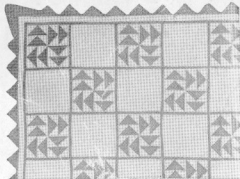


Replicas of FAMOUS QUILTS AND MODERN QUILTING DESIGNS

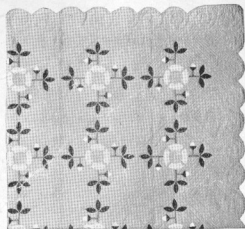
These designs may be used in any colors which may be adaptable to your decorative plan.



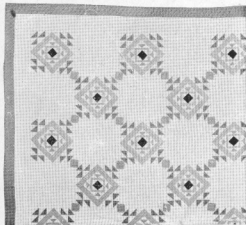
WREATH OF ROSES



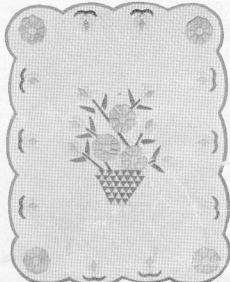
DUTCHMAN'S PUZZLE



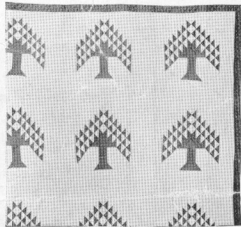
WILD ROSE



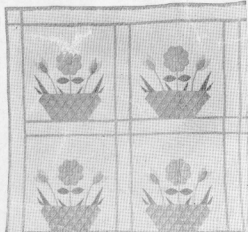
MRS. CLEVELAND'S CHOICE



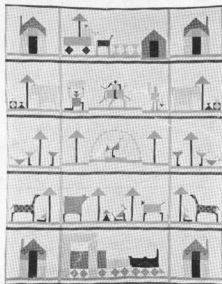
FLOWER GARDEN



PINE TREE



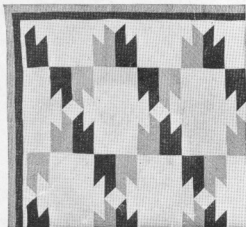
SPRINGTIME



SLUMBERLAND



HOLLAND TULIP



THE CHIEF

GROUP 1

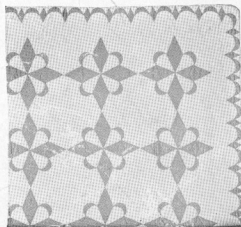
Wreath of Roses
Mrs. Cleveland's Choice
Springtime
The Chief



WHITE LILY

GROUP 2

Dutchman's Puzzle
Flower Garden
Slumberland
White Lily



STAR AND CRESCENT

GROUP 3

Wild Rose
Pine Tree
Holland Tulip
Star and Crescent

LOCKPORT COTTON BATTING COMPANY, LOCKPORT, N. Y.

"ROGERS QUALITY" BATTING MAKES THE BEST QUILT FILLING

6/19.80.1

WHITE LILY

OUTSTANDING among our patterns for beauty and simplicity of design is our White Lily. Some adaptations of the Lily pattern have been popular from the earliest copies of the quilting art.

In this design, we have blended the white flower with the tinted green background to bring out one of the most beautiful and effective quilts of the series.

The lily patch may be made in two ways, either by patching together the entire 9-inch square, using all the elements in the pattern or by patching together the six diamond petals and then appliquéing them to a 9-inch square.

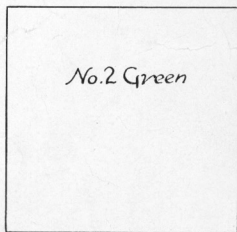
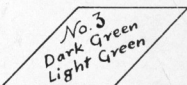
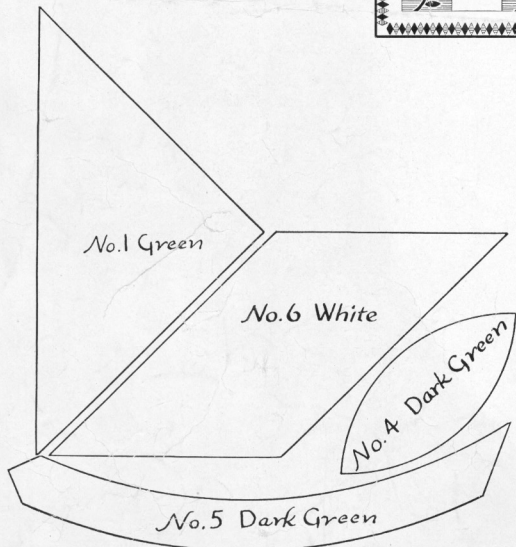
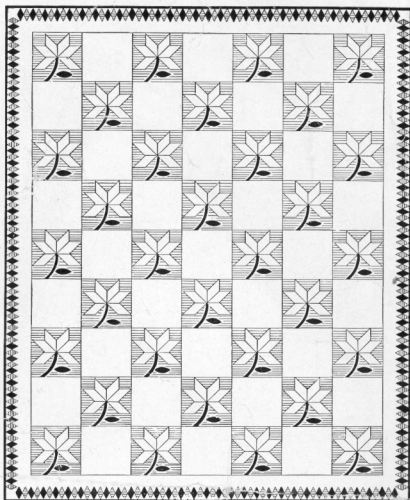
In either case, the leaf and stem, of darkest green, must be appliquéed last. The pattern can easily be worked out by following the illustrations and a quilt 72 x 90 inches requires the following materials, if you follow the patchwork method described above. The appliqué method will require an additional two yards of light green material.

It is suggested that a tracing be made of this pattern which can be transferred to either cardboard or blotting paper so as to save this pattern for future use. Allow $\frac{1}{4}$ inch on all sides of patterns and squares for seams or turning under as no allowance for seams has been made. Patterns made from blotting paper will not slide on the material.

MATERIAL CHART

Part	Color	Pieces	Yardage
No. 1—Triangle	Lt. Green	128	
No. 2—Square	Lt. Green	192	2 ½ yards
No. 3—Diamond	Lt. Green	138	
No. 3—Diamond	Dark Green	138	
No. 4—Leaf	Dark Green	32	1 yard
No. 5—Stem	Dark Green	32	
¾-inch Strips for Border	DK. Gr. (Two 90-inch)		
No. 6—Petal	White	192	5 ½ yards
9-inch Squares	White	31	
4½-inch Strips for Border	White (Two 90-inch)		
		(Two 72-inch)	

These figures are based on material 36 inches wide



Lockport Cotton Batting Company
Lockport, N. Y.

If you desire additional patterns, there is an excellent selection of both old and modern designs shown on the reverse side.

These patterns are available in groups of four. You may secure any groups you desire by filling in the coupon and sending 25 cents for each group ordered.

LOCKPORT COTTON BATTING COMPANY
Lockport, N. Y.

Please send me the patterns in

Group 1 ☐
Group 2 ☐
Group 3 ☐

I am enclosing 25 cents * for each of the groups checked above.

Name

Street

City

State

Dealer's Name

*Please do not send stamps.

Series A