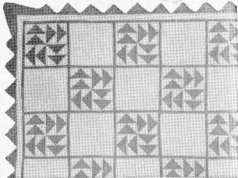


Replicas of FAMOUS QUILTS AND MODERN QUILTING DESIGNS

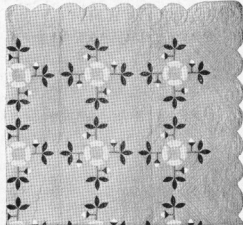
These designs may be used in any colors which may be adaptable to your decorative plan.



WREATH OF ROSES



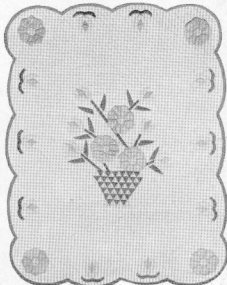
DUTCHMAN'S PUZZLE



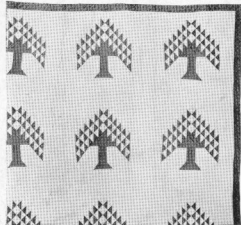
WILD ROSE



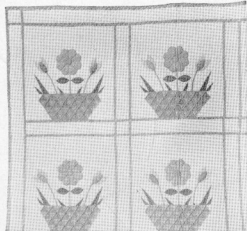
MRS. CLEVELAND'S CHOICE



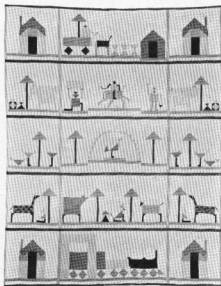
FLOWER GARDEN



PINE TREE



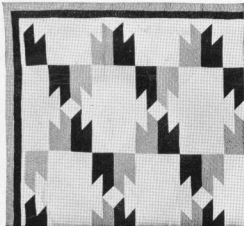
SPRINGTIME



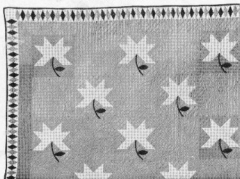
SLUMBERLAND



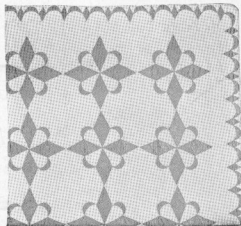
HOLLAND TULIP



THE CHIEF



WHITE LILY



STAR AND CRESCENT

GROUP 1
Wreath of Roses
Mrs. Cleveland's Choice
Springtime
The Chief

GROUP 2
Dutchman's Puzzle
Flower Garden
Slumberland
White Lily

GROUP 3
Wild Rose
Pine Tree
Holland Tulip
Star and Crescent

LOCKPORT COTTON BATTING COMPANY, LOCKPORT, N. Y.

"ROGERS QUALITY" BATTING MAKES THE BEST QUILT FILLING

THE WILD ROSE

THE Wild Rose is a modern adaptation of one of the older appliqué patterns. It was designed especially for our series of Quilt Patterns.

In it we have drawn on one of the most romantic flowers of nature, and graced it with handwork so characteristic of early American quilting.

The effective simplicity of the design can be retained in several variations of color harmony.

To start your Wild Rose quilt, first make patterns from paper for each part, allowing 1/4 inch on all sides of patterns and squares for seams or turning under. Patterns made from blotting paper will not slide on the material.

MATERIAL CHART

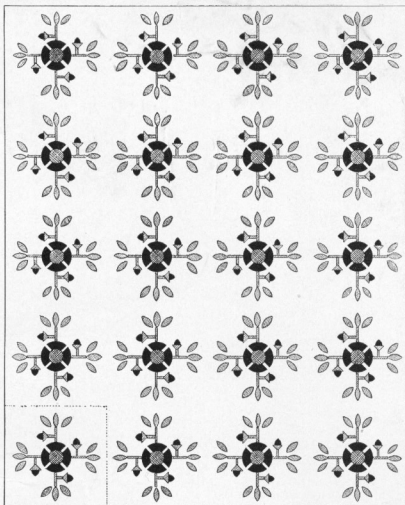
Part	Color	Pieces	Yardage
No. 1—Leaf	Green	240	1 1/2 yards
No. 2—Main Stem	Green	80	
No. 3—Small Stem	Green	80	
No. 4—Triangle	Green	80	
No. 5—Circle	Orchid	20	3/4 yard
No. 6—Bud	Orchid	80	1/2 yard
No. 7—Rose Petal	Red	80	5 yards
Square 18" x 18"	Ivory	20	{ 40" material

These figures are based on material 36 inches wide unless otherwise indicated

Twenty 18-inch squares of white, ivory or any light colored material are required for a 72 x 90 inch quilt. To make a spread of 90 x 108 inches, add one row of 5 squares both along one side and the top.

Find the center of each 18-inch square. Place center of Part No. 5 on center of square and baste center of Part No. 7 (petals) on folds of the large square as shown in the diagram.

Part No. 2 is basted also along folds with Part No. 3 (short stems) perpendicular at the middle point.



Baste Part No. 1 (leaves), Part No. 4 (triangles) and Part No. 6 (buds) according to the diagram.

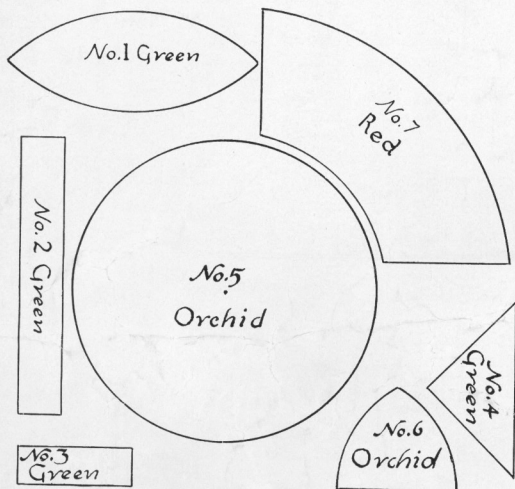
Finish the square by appliquéing with thread the same colors as the materials being sewn.

Sew squares together, fill with Lockport batting and bind edges of the quilt.

One of these squares will make a very attractive pillow top.

If you desire additional patterns, there is an excellent selection of both old and modern designs shown on the reverse side.

These patterns are available in groups of four. You may secure any groups you desire by filling in the coupon and sending 25 cents for each group ordered.



LOCKPORT COTTON BATTING COMPANY
Lockport, N. Y.

Please send me the patterns in { Group 1
Group 2
Group 3

I am enclosing 25 cents * for each of the groups checked above.

Name

Street

City State

Dealer's Name

*Please do not send stamps. Series A