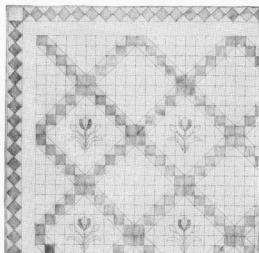


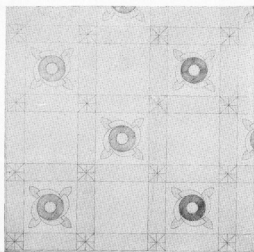
Replicas of FAMOUS QUILTS AND MODERN QUILTING DESIGNS

These designs may be used in any colors which may be adaptable to your decorative plan.

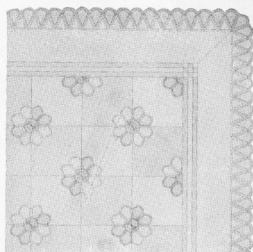
GROUP 7



MAY-MORN TULIP

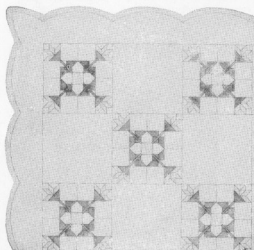


WASHINGTON MERRY-GO-ROUND

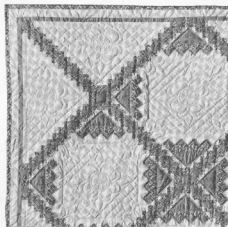


THE APPLE BLOSSOM

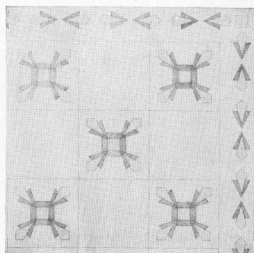
GROUP 8



DOG-TOOTH VIOLET

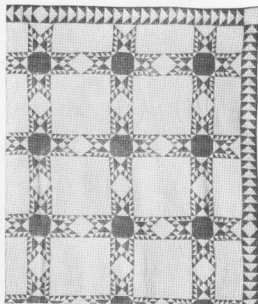


GARDEN GLORY

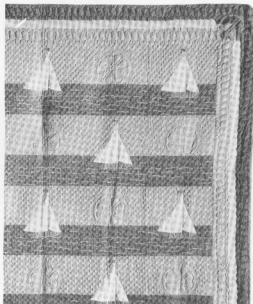


THE MODERN

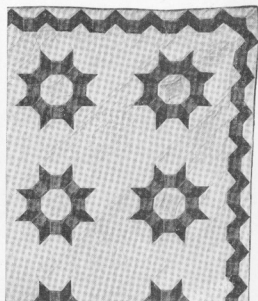
GROUP 9



A KENTUCKY QUILT



SNUG HARBOR



DOGWOOD

LOCKPORT COTTON BATTING COMPANY, LOCKPORT, N. Y.

“ROGERS QUALITY” BATTING MAKES THE BEST QUILT FILLING

WASHINGTON MERRY-GO-ROUND

SUGGESTED colors: Light and dark pink, a pretty soft print with pink predominating and a pastel shade of green. Material required: 5½ yards of white, 5½ yards of light pink, 1½ yards of print, 1½ yards of green and ¾ yard of dark pink. This makes a quilt 72x96 inches.

This little applique of whirls and circles is quite easy to make if you follow these simple directions: There are 24 appliqued blocks and 24 plain blocks (8 blocks long and 6 blocks wide), set together checkerboard-fashion, with a strip of light pink, broken at the corner of each large block by a small pieced square of print and green. These strips are 3½x9½ inches, allowing ¼ inch for seam. The white block is cut 9½ inches square, allowing for ¼ inch seam on all four sides.

The following method is used to make this applique: Trace patterns on strong, stiff kraft paper; cut carefully and then use to draw around on to the wrong side of cloth. These patterns do not allow for seams; so cut a seam larger and, with paper pattern still pinned to wrong side of cloth, turn the edges smoothly over the pattern with a hot iron. The line of pressing will be flat, which will enable you to sew the patch in place with ease.

Now we are ready to assemble the patches on the 9½-inch squares. Fold each square diagonally both ways and crease well. This locates the center as well as the position of each straight edge of the whirls, and the imaginary center line of the leaf falls on this creased line also. First locate your large dark pink circle on square and pin in place; over this, pin the small circle of print, next your whirls (with only the straight edge and outer curve turned under); slip the inner curved edge under the large circle up to the pencil line, placing the straight edge on one of the diagonal folds. There are two whirls of print and two whirls of light pink. The green leaves are slipped into place. Baste all carefully and sew.

NEW ORIGINAL MASTER QUILTING PATTERNS

We now have new style master quilting patterns that are:

Simple to use

Eliminate smear and smudge

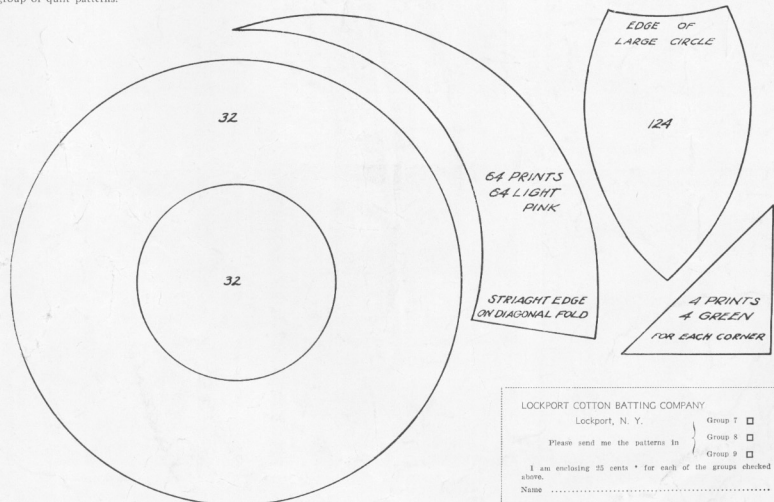
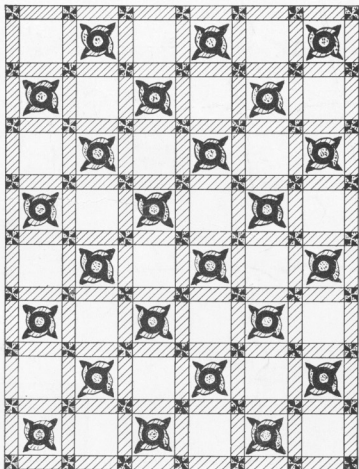
No paints or compounds required

Do not wear out

Leave no permanent mark

Save hours of time

Send 10 cents together with your dealer's name for a sample quilting pattern and our 1941 quilting pattern book showing 118 different quilting patterns or use the coupon below, sending 25 cents to secure the above plus any one group of quilt patterns.



Lockport Cotton Batting Company
Lockport, N. Y.

LOCKPORT COTTON BATTING COMPANY

Lockport, N. Y.

Group 7

Group 8

Group 9

Please send me the patterns in

I am enclosing 25 cents * for each of the groups checked above.

Name

Street

City State

Dealer's Name

*Please do not send stamps.