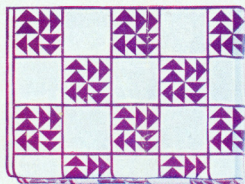


Replicas of FAMOUS QUILTS AND MODERN QUILTING DESIGNS

These designs may be used in other colors which may be more adaptable to your decorative plan.



WREATH OF ROSES



DUTCHMAN'S PUZZLE



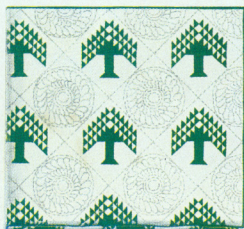
WILD ROSE



MRS. CLEVELAND'S CHOICE



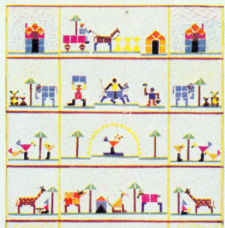
FLOWER GARDEN



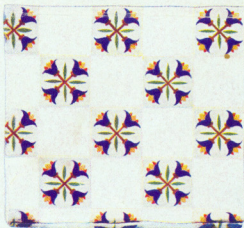
PINE TREE



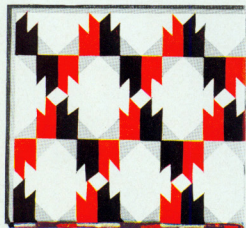
SPRINGTIME



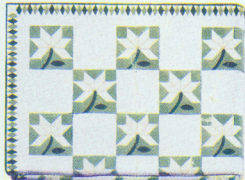
SLUMBERLAND



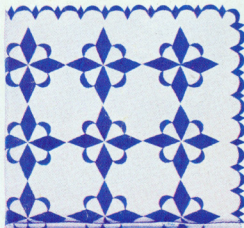
HOLLAND TULIP



THE CHIEF



WHITE LILY



STAR AND CRESCENT

GROUP 1
Wreath of Roses
Mrs. Cleveland's Choice
Springtime
The Chief

GROUP 2
Dutchman's Puzzle
Flower Garden
Slumberland
White Lily

GROUP 3
Wild Rose
Pine Tree
Holland Tulip
Star and Crescent

LOCKPORT COTTON BATTING COMPANY, LOCKPORT, N. Y.

"ROGERS QUALITY" BATTING MAKES THE BEST QUILT FILLING

6/17/30.7

HOLLAND TULIP

THE tulip has always been identified with the quaint canals and wooden shoes of Holland, so it was only natural, that one of the favorite patterns of the Dutch settlers in this country emphasized this graceful flower.

The dark blue flower in a cream colored field is very simple in design yet strikingly beautiful.

To make one patch of tulips, fold a 10-inch square piece of cloth two ways to find center. Then spread out, appliqué four leaves on creases left by folding as shown. The four brown stems are next.

Finally the tulips are appliquéd on, with the little pieces of red and yellow completing the patch.

Join with alternate 10-inch squares of a plain colored material.

It is suggested that a tracing be made of this pattern which can be transferred to either cardboard or blotting paper so as to save this pattern for future use. Allow $\frac{1}{4}$ inch on all sides of patterns and squares for seams or turning under as no allowance for seams has been made. Patterns made from blotting paper will not slide on the material.

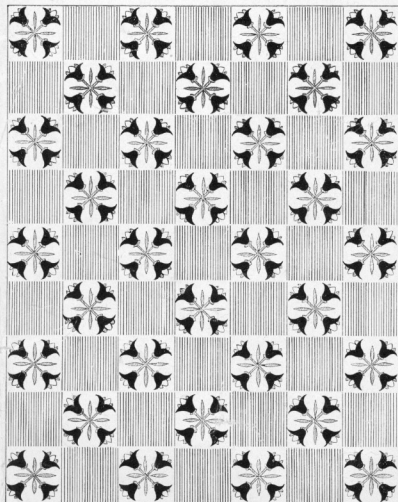
This design will make a very delightful pillow top.

The materials needed for a 70 x 90-inch quilt are given below.

MATERIAL CHART

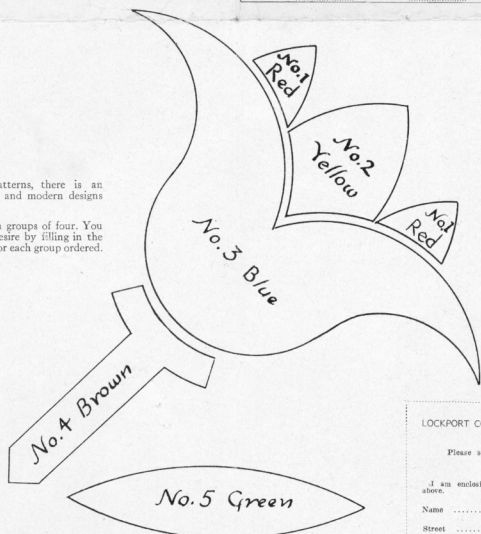
Part	Color	Pieces	Yardage
Square (10" x 10")	Cream	31	3 $\frac{1}{4}$ yards
Square (10" x 10")	White	32	3 $\frac{1}{4}$ yards
No. 1—Small Petal	Red	256	$\frac{1}{2}$ yard
No. 2—Center Petal	Yellow	128	$\frac{1}{4}$ yard
No. 3—Large Petal	Blue	128	1 $\frac{1}{2}$ yards
No. 4—Stem	Brown	128	$\frac{3}{4}$ yard
No. 5—Leaf	Green	128	$\frac{1}{2}$ yard

These figures are based on material 36 inches wide



If you desire additional patterns, there is an excellent selection of both old and modern designs shown on the reverse side.

These patterns are available in groups of four. You may secure any groups you desire by filling in the coupon and sending 25 cents for each group ordered.



LOCKPORT COTTON BATTING COMPANY
Lockport, N. Y.

Please send me the patterns in

Group 1 ☐
Group 2 ☐
Group 3 ☐

I am enclosing 25 cents * for each of the groups checked above.

Name

Street

City State

Dealer's Name

*Please do not send stamps.

Lockport Cotton Bating Company
Lockport, N. Y.