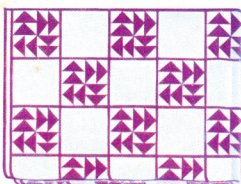


Replicas of FAMOUS QUILTS AND MODERN QUILTING DESIGNS

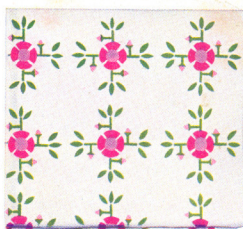
These designs may be used in other colors which may be more adaptable to your decorative plan.



WREATH OF ROSES



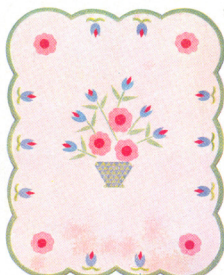
DUTCHMAN'S PUZZLE



WILD ROSE



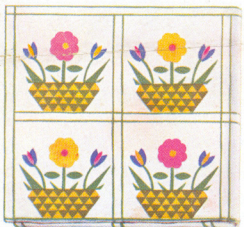
MRS. CLEVELAND'S CHOICE



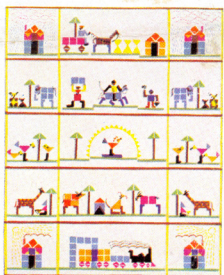
FLOWER GARDEN



PINE TREE



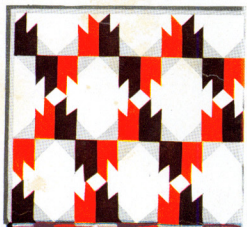
SPRINGTIME



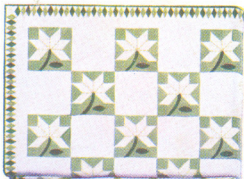
SLUMBERLAND



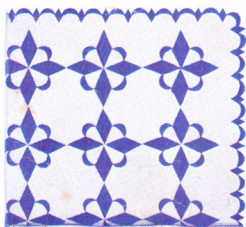
HOLLAND TULIP



THE CHIEF



WHITE LILY



STAR AND CRESCENT

GROUP 1

Wreath of Roses
Mrs. Cleveland's Choice
Springtime
The Chief

GROUP 2

Dutchman's Puzzle
Flower Garden
Slumberland
White Lily

GROUP 3

Wild Rose
Pine Tree
Holland Tulip
Star and Crescent

LOCKPORT COTTON BATTING COMPANY, LOCKPORT, N. Y.

"ROGERS QUALITY" BATTING MAKES THE BEST QUILT FILLING

THE CHIEF

THE Chief is our own modern design. Its motive is based on the blankets of the original Americans, and in the colors that we show, is comparable to a genuine Indian blanket. Our copy features bright red, black and grey, very striking colors and particularly suited for a boy's or man's room. It also carries into quilting something of the modernistic trend of the present day. By changing the color combination and using the lighter pastel shades, a very dainty, yet strikingly modern effect will be secured.

The Chief, as shown, is a patchwork quilt 72 x 90 inches in size, and by following that square of the diagram, where we have indicated all the parts, it is very easy to make.

If desired, the Chief can also be made by appliquéing the colored elements on a white background.

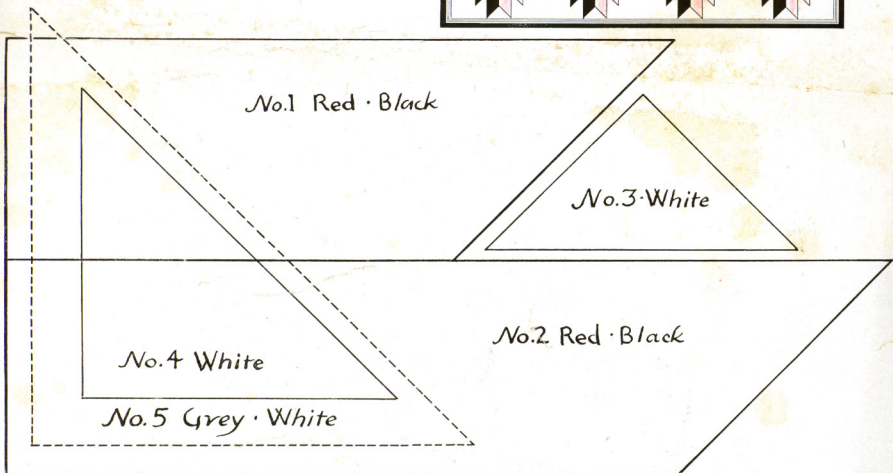
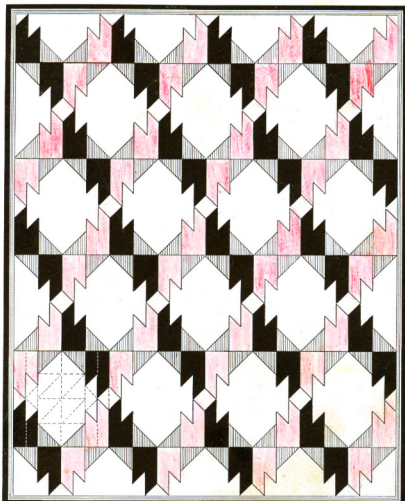
To make the pattern, trace and then paste on cardboard allowing 3/4 inch on all sides for the seams.

MATERIAL CHART

Part	Color	Pieces	Yardage
No. 1	Red	40	1 1/2 yards
No. 2	Red	40	
No. 1	Black	40	1 1/2 yards
No. 2	Black	40	
Border	Black	2	
No. 3 Triangle	White	18	4 yards
No. 4 Triangle	White	151	
No. 5 Triangle	White	240	1 1/2 yards
Border	Grey	2	

These figures are based on material 36 inches wide.

In our copy the first and third rows are the same while the second and the fourth rows have a half square at the left hand side so as to break the pattern.



Lockport Cotton Batting Company
Lockport, N. Y.

If you desire additional patterns, there is an excellent selection of both old and modern designs shown on the reverse side.

These patterns are available in groups of four. You may secure any groups you desire by filling in the coupon and sending 25 cents for each group ordered.

LOCKPORT COTTON BATTING COMPANY
Lockport, N. Y.

Please send me the patterns in
 Group 1
 Group 2
 Group 3

I am enclosing 25 cents * for each of the groups checked above.

Name

Street

City State

Dealer's Name

*Please do not send stamps.