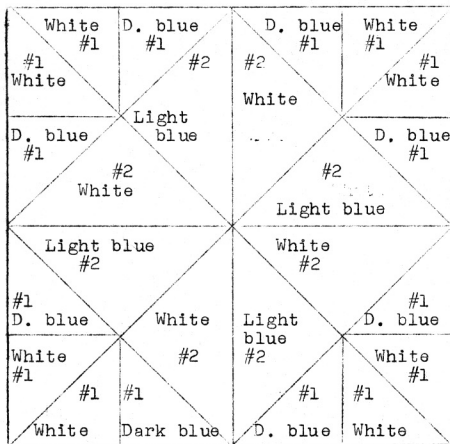


QUILT PATTERN NO.127 - WINDMILL
INSTRUCTION SHEET



SIZE OF QUILT, 78x91 inches.
This quilt is made up of forty-two pieced blocks set five blocks in width and six in length. This combination is surrounded by a border of one-half blocks and quarter blocks at corners.

COLORS
White and two shades of blue are suggested for this design. Any color may be substituted or any two harmonizing colors. See Color Chart for arrangement of colors.

AMOUNT OF MATERIAL REQUIRED
White.....4 yards, 24 inches
L.blue.....2 " 18 "
D.blue.....2 " 6 "
Total.....9 yards, 12 inches

The numerals are the piece numbers.

NUMBER OF PIECES TO BE CUT
Piece No.1.....336 white
" No.1.....336 Dark blue
" No.2.....168 Light blue
" No.2.....168 White

SUGGESTIONS FOR CUTTING

Trace pieces of the pattern on light cardboard or sandpaper and cut out. Use these cardboard or sandpaper patterns as cutting guides. The most accurate method is to lay pattern on material(rough side down if sandpaper is used); mark around with pencil. Cut out on pencil lines. Whenever possible, lay straight edges of the pattern parallel with the threads of the material.

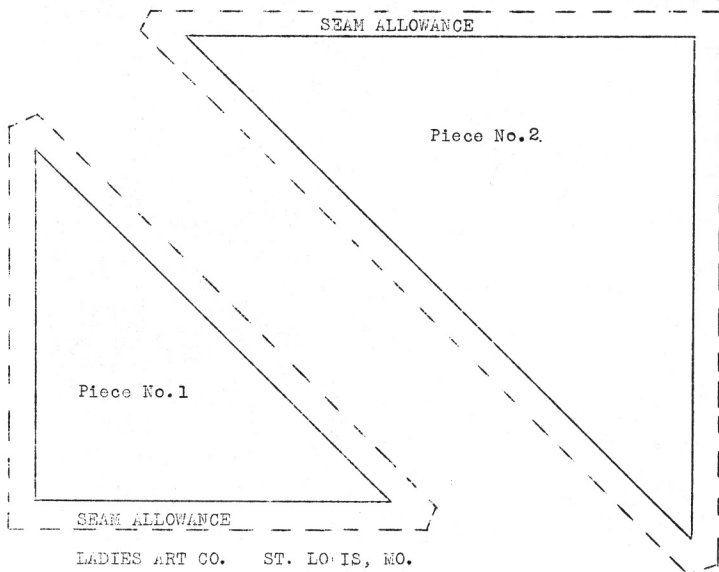
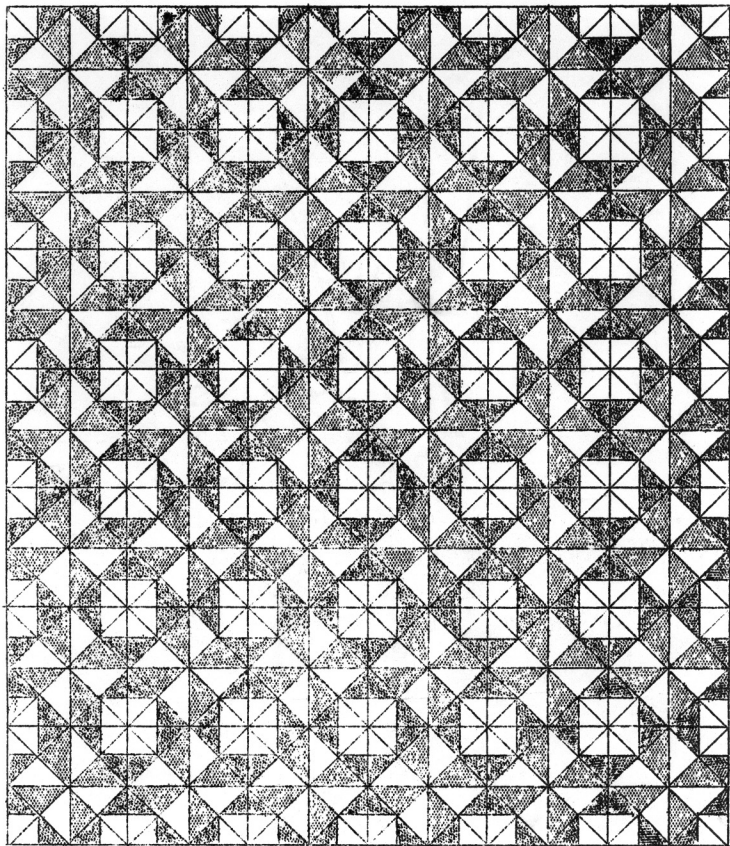
QUILTING

Quilt along all the seams of the piecing.

LADIES ART CO.

Since-1889

ST.LOUIS, MISSOURI



127.