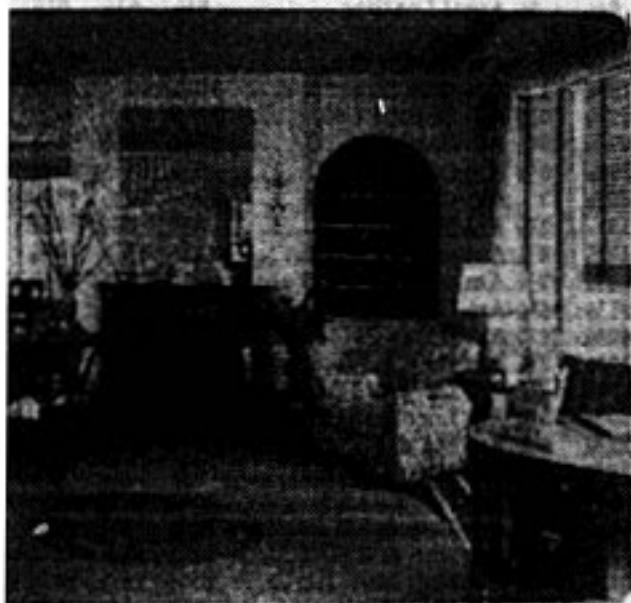


and Lido Sand Colors in This Rug

By EDITH B. CRUMB.

WE TO GIVE ASSISTANCE to all who are interested in beautifying their homes. We will answer questions pertaining to interior decoration. We seek advice promptly no more than three problems will be answered. Readers are invited to write to this department as often as each letter to three questions. State your questions clearly. Enclose a self-addressed, stamped envelope, and send to Department, Detroit News. Letters with their answers benefit all homemakers, but names and addresses will not be published.



A series of stories on the exterior and some of the interiors which have been designed, built and furnished and on display at the Stran-Steel house.

shown the living room of the Stran-Steel house, which would attract you to the point of wanting to be denied, for it has about it that atmosphere that if one can achieve that quality a room is certain to be successful.

As far as 1933 as far as background is concerned, the design with a view to being between the modern and comfort and charm have been uppermost in the mind.

One of the front room in the illustration is the same you enter the front door, and because the stairway entrance, you see the scheme.

It is marbled and over an oval rug. It is in the new outside a Lido

It is white and of blue. Don't striking back-to build a dis-

Lumbert, of Portland, Michigan. Mrs. Weber sent me a whole Dresden Plate block all cut out and all I had to do was sew it together. Wasn't that nice? I would like to receive more letters from the members and I will answer them as soon as I get them.

I wonder if you could give me some idea about the color for the background for the Dresden Plate? I've

Horoscope Quilt Pattern No. 38

AND now Pisces, the last of the zodiac signs is ready for your border and then you will have an opportunity to send for a few quilting designs and then you will be able to finish your quilt. How do you feel about it now that it is nearly finished? Be sure to write a little note in to the Corner for everyone is interested in your quilt-making.

A reprint of this leaflet from The Detroit News will be mailed to anyone wishing it, upon receipt of request, if accompanied by a self-addressed, stamped envelope. Address Beauty in the Home Department, The Detroit News. Copies may be secured by calling personally at The Detroit News Public Service Bureau in either the General Motors Building or the Majestic Building. Pontiac residents may secure this leaflet at The Detroit News Pontiac Bureau, 412 Pontiac Bank Building.

got most all the colors you can think of except a peach tint. Do you think this would be all right?

If letters keep the Corner alive, I would write every day if necessary. However, I will send one in once in a while. I hope everybody writes to the Corner to keep it going.

MRS. J. ROCKWOOD,
164 E. Grand Blvd.,
Detroit, Michigan.

No doubt, you will receive a good many more letters now for every one seems to be having quite a good time corresponding with other members and exchanging pieces.

Mrs. Weber was certainly nice to send you that block all ready to sew together.

Peach (if a very pale tint) would be a very attractive background for your quilt and white or ivory will be nice too.

Don't forget your promise to send a letter once in a while and I am sure that every one realizes how important it is to send in a letter or card and I am delighted with the response.

Santa Barbara, Calif., received so many inquiries it is considering manufacturing for sale the metal policemen developed to stand in the street and warn motorists of school crossings.

is of black marble and bronze.

The window treatment consists of white Venetian blinds (and, by the way, these were used in nearly every house at the Century of Progress) and hangings of yellow linen, made floor length, with a smartly (but plainly) draped valance.

The two-seated sofa at the left of the fireplace has a covering of medium blue homespun, the seams being finished with yellow moss edging instead of the usual piping.

At the right of the fireplace is an easy chair covered in yellow ground linen with blue predominating in the design. The chair at the extreme left is covered in blue and yellow striped satin, and at the right just beyond the large circular desk table is a chair covered in white leather.

White accessories in the way of lamp bases and figurines, distribute this note throughout the room in balanced effect and the interior of the built-in book-shelves are finished in blue (deeper than the ceiling).

In the alcove at the upper left is shown the dining bay, the background of this matching that of the living room.

Don't you see many ideas in this room which you would like to make a note of just in case you wish to returnish soon?

Quilt Club Corner.

I'VE just finished my Dresden Plates; but have not sewed them on the blocks yet.

I have received two letters from members of the Quilt Club Corner. One of them was from Mrs. F. C. Weber and the other one from Mrs.

Beauty in the Home Editors

Please enter my name as a member of the Beauty in the Home Quilt Club.

Name

Street and number

City State

This enrollment in the Beauty in the Home Quilt Club entitles the member to enter her quilt in the exhibit which will be held after the completion of the series of Horoscope patterns. Date of announcement will be made later.

Anyone who has completed a quilt from any Detroit News pattern will be eligible to become a member and enter this contest.