

ad quickly
and water,
will form a

flour, 2
er, 1/2 cup
ng, 1 cup
ten until
d, 1/4 cup
anilla or
act.

add bak-
ether three
horoughly,
cream to-
uffy. Add
then flour,
k, a small
after each
Add flavor-
a greased
erate oven
es, or until
asting over
two square

os brown
teaspoon
bran, 1
, 1/2 cup

at, add the
d the flour
wder. Add
Spread the
-half inch
allow pan.
n (375 de-
0 minutes.
and while
bars. Roll
sugar and
n whipped
d sugar.

sugar, 2
cup dark
1 table-
pound

water until
(medium
and pea-
Remove
eased pan
s.
kies

1/2 cup
dates, 1
finely, 1
oda and

ients to-
and nuts.
tter. Sift
me. Drop
ing sheet.
15 to 20
make 40
ous good-

Relish
oranges,

Washable Top Practical for Piece of this Type

By EDITH B. CRUMB

THERE are cocktail tables and cocktail tables, and if you have any experience with a little wobbly one that may have been very attractive but failed you in a crisis, you will appreciate the table shown in the illustration.

It has many qualities in its favor, the first one being that it is attractive, second that is large and solidly constructed and third it has washable leatherette on the top.

UNUSUALLY LARGE

Being 36 inches long, 20 inches wide and 18 inches high, it offers opportunity for the serving of several guests without having to add one or two other tables. If you have that experience you will probably remember that it meant the re-

in having her living room upset to that extent, especially while she has guests.

So there should be no reason why this cocktail table would not solve an important problem.

Of course, as a coffee table it would be equally as reliable, for it would hold a coffee service for eight or 10 and even then it would not appear crowded.

TRY THIS—

Just measure off a space 20x36 inches on your dining or breakfast table and see how large it would be for a coffee or cocktail table.

As for the finish, you may have walnut, mahogany or bone finish, the price for the piece in any one of these being so low that it won't do one bit of damage to that budget you have been so careful to keep.

Tomorrow is your last chance to do Christmas shopping, and for those who start and finish it on the day before Christmas, here is a note to jot down at the top of the list: "One cocktail or coffee table."

Just a Reminder to Quilt-Makers

So popular has the Double Wedding Ring quilt pattern been that it has been necessary to keep a large supply of patterns in stock. If you have not already had this fascinating design, now is the time to send for it and have it ready for that first quilt you are planning to start after New Years. It is made of many small pieces, which makes it an economical quilt to collect materials for and is an ideal one for patch exchanges.

The catalog number is ID28. To procure this leaflet, send your name and address with five cents postage—giving catalog No. ID28 to The Detroit News Public Service Bureau and it, with any four others you select, will be mailed to you unfolded to fit the new holders. Or you may call in person for them at The Detroit News Public Service Bureau in the main building of The News at Second and Lafayette, or the branch offices in the Majestic or General Motors Building.

removal of lamps, books and smoking accessories from the extra tables required and there isn't a homemaker living who finds any pleasure

Pastor Owns

Fashion's Forecast By YVONNE



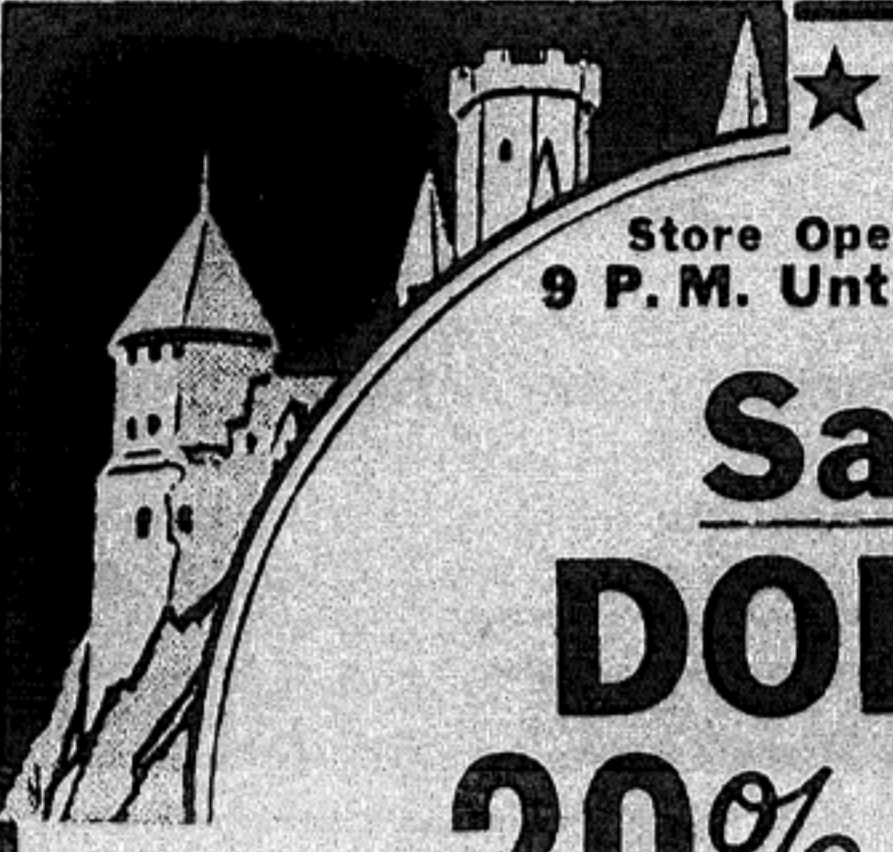
Please enter my name as a member of the News Quilt Club.



Name.....

Address.....

City.....



Store Open
9 P. M. Until

Sale
DOUBLE
20%

Hurry! While Selections Last

Shirley Temple

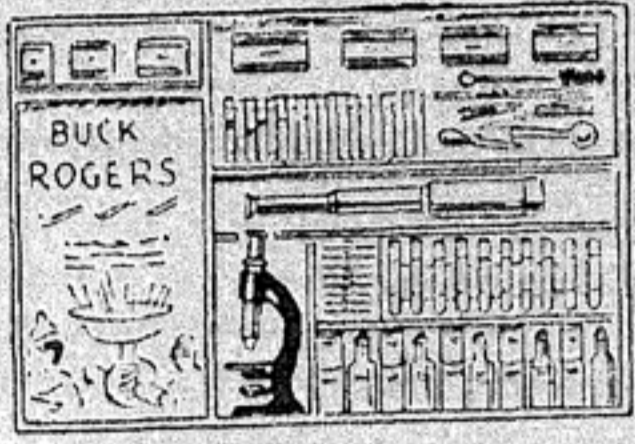


\$2.95 REG., NOW \$2.36
\$4.95 REG., NOW \$3.96

Large, 24-Inch Miss Movie Doll

Nicely dressed in organdy, real hair wig, rayon sock and white booties. Goes to sleep.
Reg. \$4.25, now

\$3.39



Mickey Mouse and Other Musical Tops

**25c, 49c
and 98c**



Com Reg.

A com
grade
slides
mens.
chart.

BU

Heavily
real cl
\$1.00.