

# The Detroit News

Radio Station WWJ

Public Service Bureau  
THE HOME NEWSPAPER

Interior Decoration

## MOTHER GOOSE QUILT SERIES—PATTERN No. 1

### MOTHER GOOSE

This may be worked in an etching stitch in red, blue, green or any plain color; or the whole may be in applique.

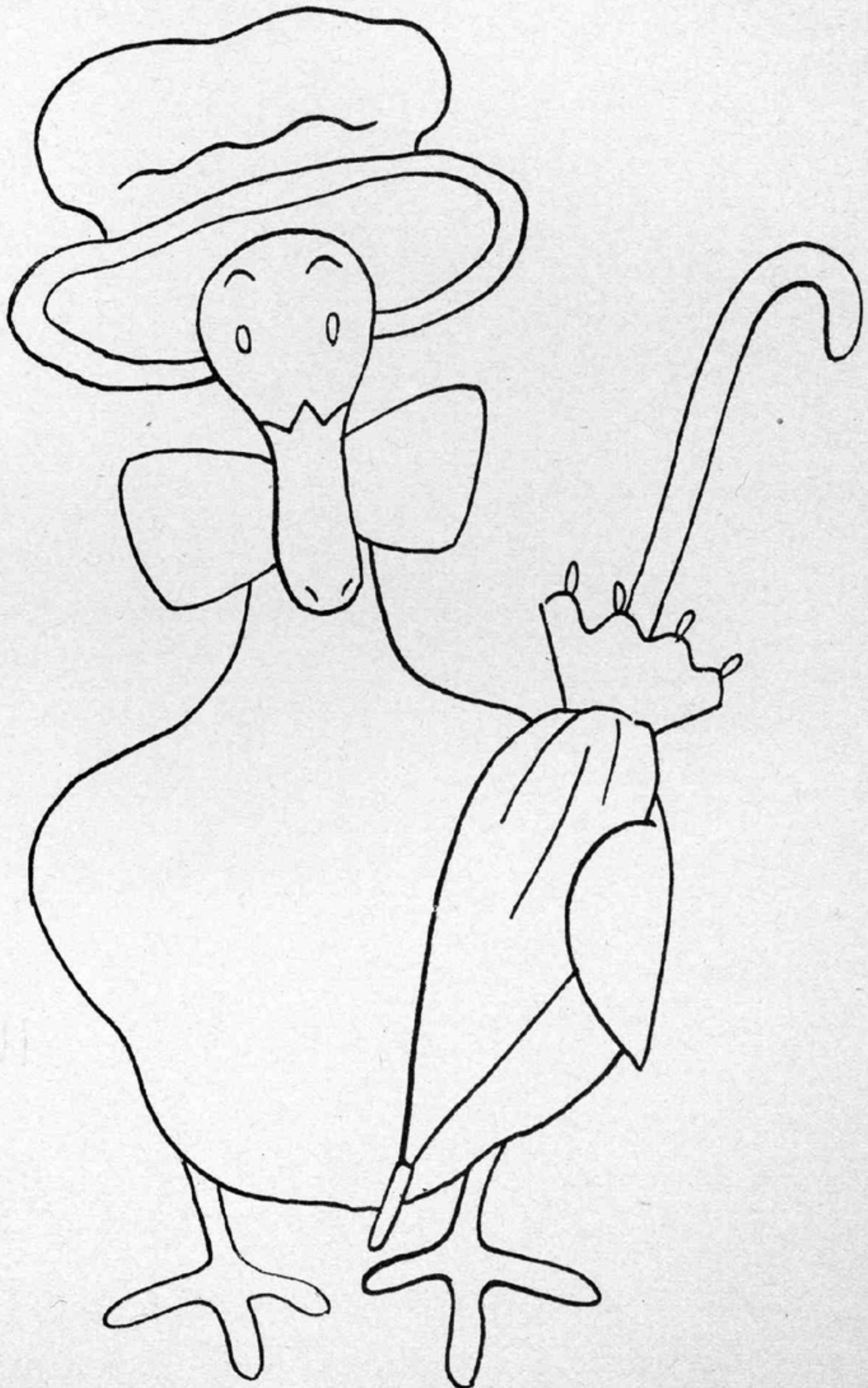
The body might be appliqued in a nice warm gray or tan; with

bright orange feet and bill; brown spokes embroidered in dark brown umbrella with red handle; bright or black silk thread in solid stitch. red bow at the neck and a blue hat. The feet and bill may be orange

This will also be attractive in a combination of applique and solid embroidery. The body, bow, hat

and umbrella may be appliqued; with the umbrella handle and ends of

solid stitch embroidery and the rim of the hat also embroidered. Of course, there would be nothing quite so expressive as blue French knot



MOTHER GOOSE