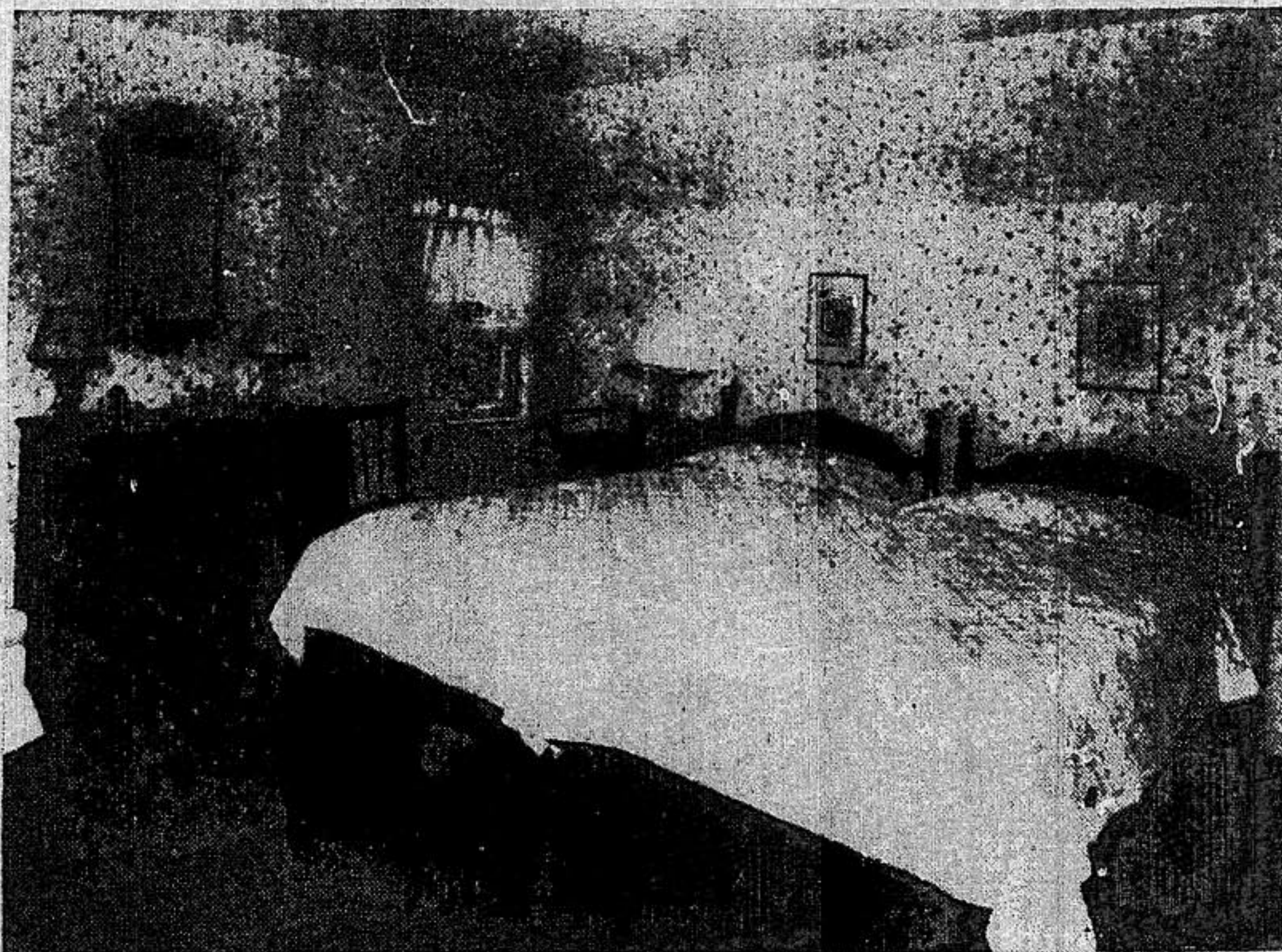


Ceiling and Walls Papered



White paper with a small rose and bud design is used for the walls and ceiling of this room which has white woodwork, soft rose ruffled curtains, maple furniture and hand-made quilts used as spreads.

Hand-Made Patch Quilts Are Used as Bedspreads

By EDITH B. CRUMB

DROP ceilings and dormer windows sometimes present a problem in paper hanging. To do away with all questions about where to stop the side wall paper, the method of covering the ceiling and drop to match the walls gives satisfactory results.

Care should be given to selection of the paper, for it should be a design which has no definite direction, such as up and down stripes. A small scattered effect is an ideal choice for the treatment.

One charming room of this type has been covered with white paper with a delicate design of moss roses and buds in rose and green.

THE WOODWORK is white to match the background of the paper and the curtains are of soft rose voile finished with ruffles and draped back with ruffled bands of the same material. These curtains match the softer tint of rose in the paper.

The furniture is maple and for spreads there are hand-made quilts in rose and white, the design being an adaptation of the

Nine-Patch which was favorite among early quilters.

An upholstered chair with a covering of quilted rose chintz lends an interesting note to the scheme. The lamps have glass bases of the old oil-burning type, electrified and equipped with simple shades.

A ROOM SUCH as this is an ideal one in which to use quilts for spreads and they may be arranged over the pillows or they may be brought up flat beneath the pillows and the pillows covered with shams of plain white percale or a fine quality of linen finished with a row of tucks, a wide hem and finally a ruffle of embroidered muslin or organdie.

In selecting a quilt, the traditional designs should be considered for they are often more in keeping with the scheme than some of the more recent ones.

★ SEE NEW ROYAL RECIPE BELOW



strain on the material under the button.

PIN STRIPES may be worn off at the knees or elbows. These may be restored by machine stitching. Use white thread in

Where to Enlist

SPARS—531 Lafayette Building, 144 West Lafayette. Hours—8:30 a. m. to 9 p. m.

More Michigan Women Sign with Armed Forces