



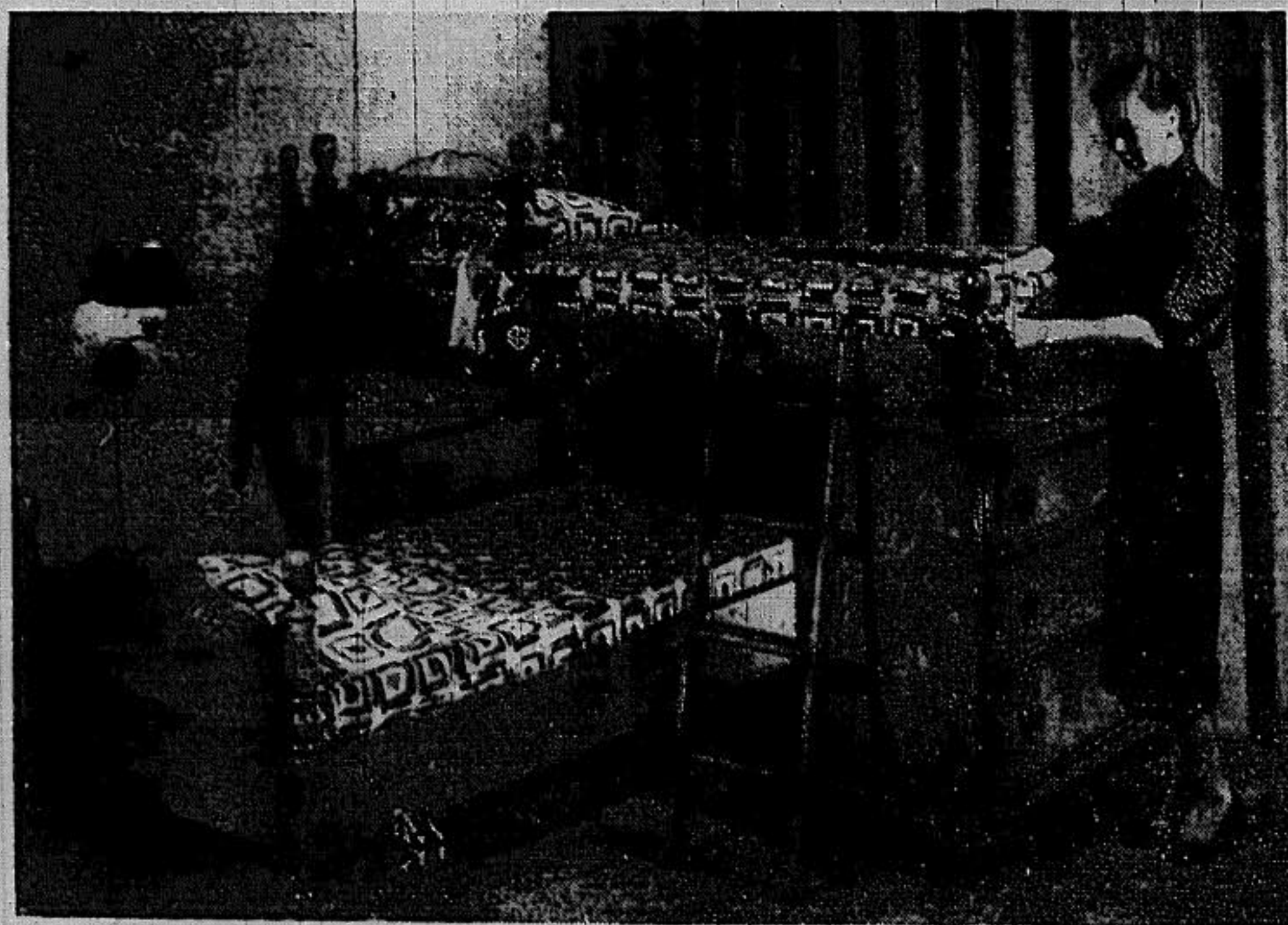
This shows one of two new night tables designed by Herbert Ten Have for the Cross Country group. When closed it matches the sliding panels of the bed head-board.

Photos—Grand Rapids Furniture News Bureau

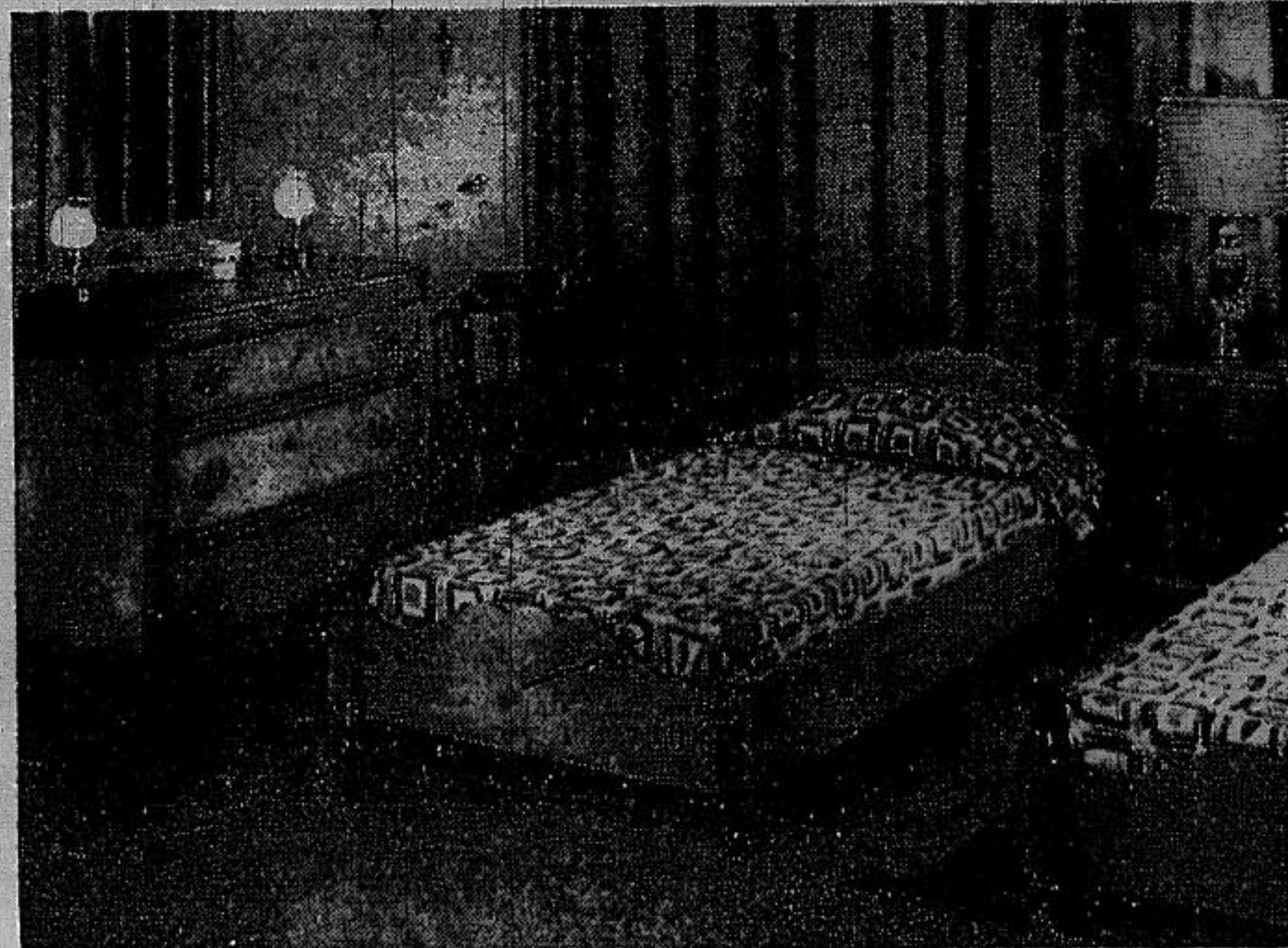
## Multiple-Duty Furniture



For this market the Hi-Lo table has been equipped with leaves and extra legs to make it an extension dining table that will accommodate eight.



The upper bunk is so low it may be made up without ladder or stretching. The lower one is on casters so it may be moved for making up and the chest supports and becomes a part of the group.



Separated, the bunks turn into twin beds and the chest, as a separate piece, makes the change-over.

### Designers Practical

Feature Light, Dark Woods, Combinations

By EDITH B. CRUMB  
Home Furnishings Editor

GRAND RAPIDS, Mich., Jan. 18.—This market is always full of surprises even for the veteran who thinks that designers can't possibly think up anything more that will make furniture more useful.

Anyone who thinks that hasn't figured on what Herbert Ten Have has done in the way