

### DETROIT NEWS HOUSE PLAN NO. 55-7

Here is shown the exterior of house from plan No. 55-7. It is a one-floor house, without basement, and has an exterior which combines wood shingles, horizontal siding and asphalt shingles for the roof.

## Laundry Combined With the Kitchen

By EDITH B. CRUMB  
Home Furnishings Writer

This week's plan which was executed by Richard B. Pollman and listed in the Home Section files at No. 55-7 is for one-floor house without basement.

It offers the advantages of easy housekeeping as in an apartment but includes the added

good feature of the privacy of a single house.

Even though it is only 36 ft. in length and has a depth of only 23 ft., this house contains three bedrooms, thus making it possible to accommodate a family of up to six members.

#### LARGE WALL AREAS

The living room which has an overall length of over 21 ft. has

large wall areas which make the arrangement of furniture groupings without having the room cluttered.

A large area at the end of the 16 ft. long kitchen has been planned for dining furniture and there may be a drop-leaf table placed at the rear end of the living room to take care of a larger number of diners.

At the left of the kitchen is the laundry area with washer, dryer and a laundry tub.

#### HEATER AREA

Next to the bath and back of the kitchen is a small recessed area for the heating equipment.

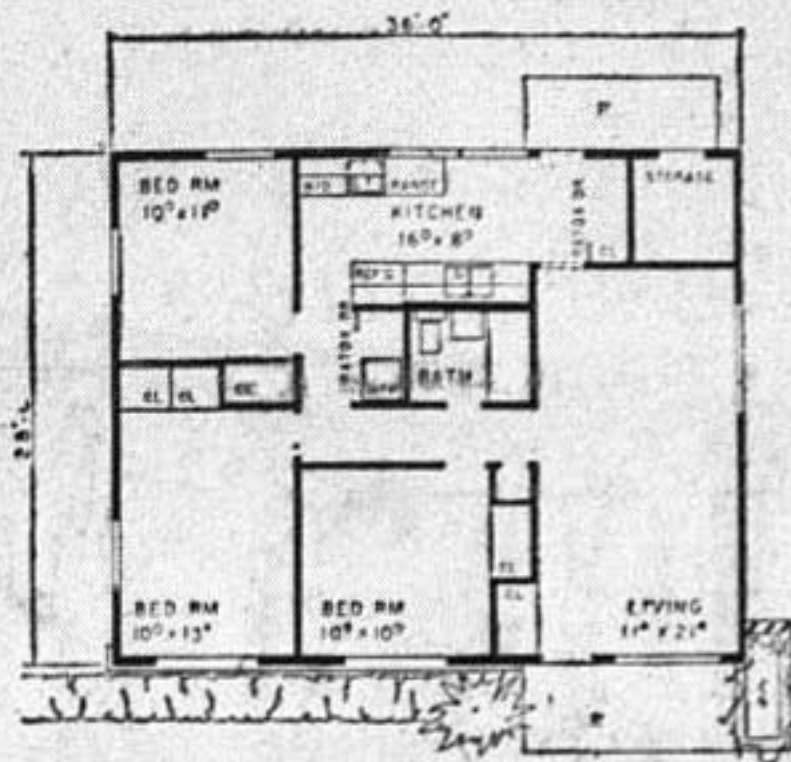
A large closet is placed at the dining end of the kitchen for storage and, since there is no basement to provide storage, a closet approximately 6 ft. square has been designed with an entrance from the rear of the house. This is for the purpose of taking care of summer furniture, garden equipment, etc.

Instead of conventional hinged doors closing off the kitchen closet and heater equipment recess there are folding doors of vertical flat basswood slats, each less than an inch wide. The slats are woven together with extra-strong seine twine to form a wood fabric with an interesting texture that harmonizes with the general scheme.

#### SIDING AND SHINGLES

The exterior of this house is of wood siding and brick for the front and gables, double-course wood shingles, sides and rear and asphalt shingles for the roof.

If you wish to purchase the plans for this house please use the coupon for that purpose. The price is \$6.50 for one set or \$18



FLOOR PLAN OF 55-7—The compact arrangement of this house makes it possible to have a living room over 21 ft. in length, three bedrooms and a generous amount of closet space.

### EARLIER PLANS ARE AVAILABLE

Previous Detroit News house plans still are available. Selections may be made and orders for blueprints left at the main business office of The Detroit News, Second and Lafayette, or at The News office in the Majestic or General Motors buildings, at the J. L. Hudson Co. Home Planning Center, and the B. A. Chaplow Lumber Co., 8675 Seven Mile road east.

## FENCE

"Do It Yourself"  
or We'll Install

FHA TERMS

OAKLAND

### HAVE YOU INVESTIGATED?

#### The Westinghouse Home Precipitron

Purifies Air Electrically  
Provides Allergy Relief  
Simplifies Housework  
Saves Money

CALL OR WRITE TODAY

TEMP-MATIC

TO 8-2925

12300 Hamilton Ave.



Westinghouse  
PRECIPITRON

### 5,000 BIRCH FLUSH INTERIOR DOORS From \$3.95

#### FREE BLUEPRINTS WITH EACH JOB

No Cash Needed. Terms. Free Delivery 75 mi. on materials to build the following buildings—to include windows, doors, siding, roof shingles, hardware, nails and all fir and white pine lumber—

1-Car Garage . . . \$235.00 20x20 Cottage . . . \$549.00  
2-Car Garage . . . 349.00 24x24 Cottage . . . \$59.00  
20x28 Cottage . . . \$863.00

### LOOK AT THIS! BIRCH 10¢ Ft.

Plywood paneling for den, rec. rooms, libraries, offices. Regular retail price, 30¢ ft. Sell-out 40,000 ft. of

FIR, 2x4s, STRAIGHT . . . . . 35¢

#### LINCOLN LUMBER CO.

29865 MICHIGAN AVE. PARKWAY 1-5110 OPEN  
Inkster, Mich., 1 Blk. W. of Middlebelt PARKWAY 1-9650 8-5

