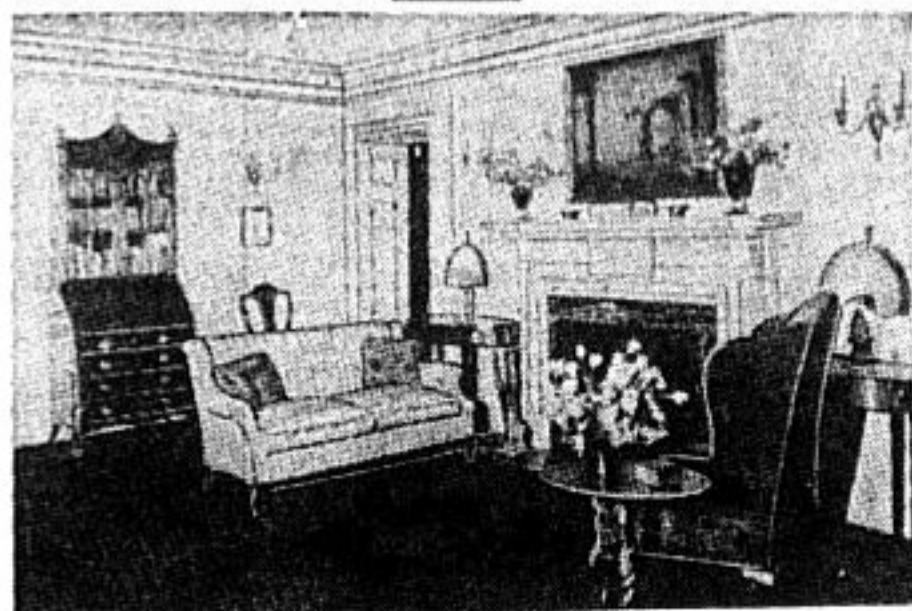




BEAUTY IN THE HOME



This department seeks to give assistance to all who are interested in beautifying their homes, and will be glad to answer questions pertaining to interior decoration. In order to serve all who seek advice promptly, no more than three problems will be discussed in any one reply. Readers are invited to write to this department as often as they wish, but to limit each letter to three questions. State your questions clearly, write only on one side of the paper, enclosing a self-addressed, stamped envelope, and address Beauty in the Home Department, Detroit News. Letters, with their answers, will be published for the benefit of all homemakers, but names and addresses will not be made public.



By EDITH B. CRUME.

A WELL balanced living room is one which lends dignity to a house, and in the accompanying illustration from *The American Home* is shown a portion of a room which is very attractive.

The fire-place being used, of course, as the center of interest, has grouped about it those pieces which make for comfort and lend an air of hospitality.

The sofa, being medium sized, at the left of the fire-place, is balanced by a wing chair and small table at the right.

On each side of the fire-place is a console on which is placed a lamp with umbrella shaped shade and decorative finial.

The woodwork and walls of this room have been finished in a deep cream and the floor covering is,

jade green. The covering of the sofa is in jade green and lilac satin and moire striped material and the wing chair is covered in lilac velvet.

The extra pillows on the sofa are covered in lilac ground brocade and the lamp shades are of pongee colored taffeta over amber taffeta trimmed with fringe to match the outer covering.

The over-mantel treatment is simple but effective, the center of the shelf having a low decorative box which does not interfere with a full view of the painting and each end of the shelf has a jade green pottery vase.

Yellow and Chinese Red.

Dear Decorating Department: I am having a new house and wish you would help me with the kitchen and breakfast nook. The only color I do not care for is green.

There are two casement windows, one over the sink and one in the breakfast nook. I would like help as to the curtain material and color, color of painted walls, breakfast furniture (which is a gate-leg table and ladderback chairs). There are little built-in shelves (open) across the corners in the breakfast nook.

Also please suggest color for linoleum.

MRS. M. S.

The floor covering in the kitchen may be black and cream checked linoleum and the walls may be finished in butter yellow.

For the curtains select Chinese red and white gingham in inch and

a half checked design and finish the furniture in Chinese red trimmed with black.

The interior of the little built-in shelves may be finished in Chinese red.

My Neighbor Says

Flannel should never be used for needle-books as it is often prepared with sulphur which will rust the needles. A piece of fine linen or chamois is better.

Use a fork when making mayonnaise dressing. A beater is likely to cause the egg and oil to separate, while a fork will mix the ingredients thoroughly.

Use luke-warm water and borax to wash out your refrigerator. This keeps it sweet and clean; also a piece of charcoal kept on one of the shelves will absorb all odors.

When buying meats for a large family, it is well to know that shoulder of beef is a good invest-

What a wonderful difference in



Spaghetti with Hamburg
Appetizing and easily prepared

FOULDS

You'll Enjoy Bringing

Weil & Co.'s TOYS

HAVE ALL TOYS CHARGED TO YOUR ACCOUNT

Tomorrow! Bring the children to the Toy Fairland where dreams come true! Young folks of from 5 to 80 years find this a place of wonder and delight!

Many of the Toys are featured at Special Pre-Holiday Prices as an added inducement to "Shop Early."

3-9

Sa