

SUFFICIENT ODDITY HERE TO CREATE COMMUNITY

On Somerset Avenue Near Grosse Pointe

This House Was Built From Plans Prepared for The News by Detroit Architects Small Homes Bureau.

By EDITH B. CRUMB,
(Interior Decoration Department)

A touch of English, combined with straight-line Colonial, make this an ideal home, both architecturally and in arrangement. There is just sufficient oddity of facade to distinguish it in the community as a residence of rare beauty.

This is distinctly a house to live in. The downstairs is arranged with an eye to more sense of space than a house of this size can usually acquire. This is the type of home that gets prettier the more one dresses it up. The addition of awnings, little fir trees, window boxes and gay curtains will all add their quota of beauty.

The four windows across the front and the two on the side of the living room provide an abundance of light. The dining room is equally well provided with openings. In fact the entire layout is such that there is not a dark or dull room in the whole house.

On the second floor are three large bedrooms, all well lighted and ventilated, with ample closet room. Stairway to the attic provides a delightful place for the children's play room, or for storage space.

The plans for this house were produced by The Detroit Architects Small Homes Bureau who have cooperated with The Detroit News Home Building Service since its inception six years ago. During this time homes to the value of over fifteen millions have been built either directly or indirectly from plans included in this service.

This house was constructed by a local building firm and is now completed and ready to be shown to anyone who is interested in a home of this size and quality. It is located at 3585 Somerset avenue, one-half block north of Mack avenue, in the Grosse Pointe section. It will be open afternoons and evenings until Christmas eve.

Here is a description of the decoration scheme which was used in the house and also suggestions as to how it could be furnished in keeping with the interior arrangement.

Living room and hall: Woodwork, walnut finish; walls, rough plaster surface finished in a rich parchment color; floor covering, fawn Wilton; window treatment, draw

trimmed top and bottom with gold braid.

Front bedroom, right: Woodwork, ivory; walls, rose; glass curtains, like those in the other bedroom; over-draperies, light green ground flowered chintz trimmed with bands of rose chintz; floor covering, light green Wiltons in small sizes; furniture, light green and to consist of full sized bed, chiffonier, dresser with separate over-mirror, small table and upholstered chair with slip covering of the drapery material; bedspread, cream or white marquise with a light green dot over rose sateen; dresser covers, the same; electrical fixtures to be of rose chiffon over taffeta of the same color, trimmed top and bottom with light green moire ribbon binding.

Rear Bedroom: Woodwork, ivory; walls, light blue; glass curtains, like those in the other bedrooms; over-draperies, ivory ground warp print with floral design in blue, rose, lavender, yellow and green, trimmed with knife pleated ruffles of blue chintz; floor covering, plain blue rug; furniture, walnut and to consist of full sized bed, dresser, small desk, single chair and upholstered chair, with slip covering of the drapery material; bedspread, blue and white cross-bar novelty material; dresser cover, blue linen trimmed with cream lace edging; electrical fixtures to be equipped with small pattern chintz shades, trimmed at the top and bottom with plain blue bands.

Bath Room: Tile, green and white; walls, light orange; curtains, light orange organdie bound with plain green taffeta.

Cost of House and Services

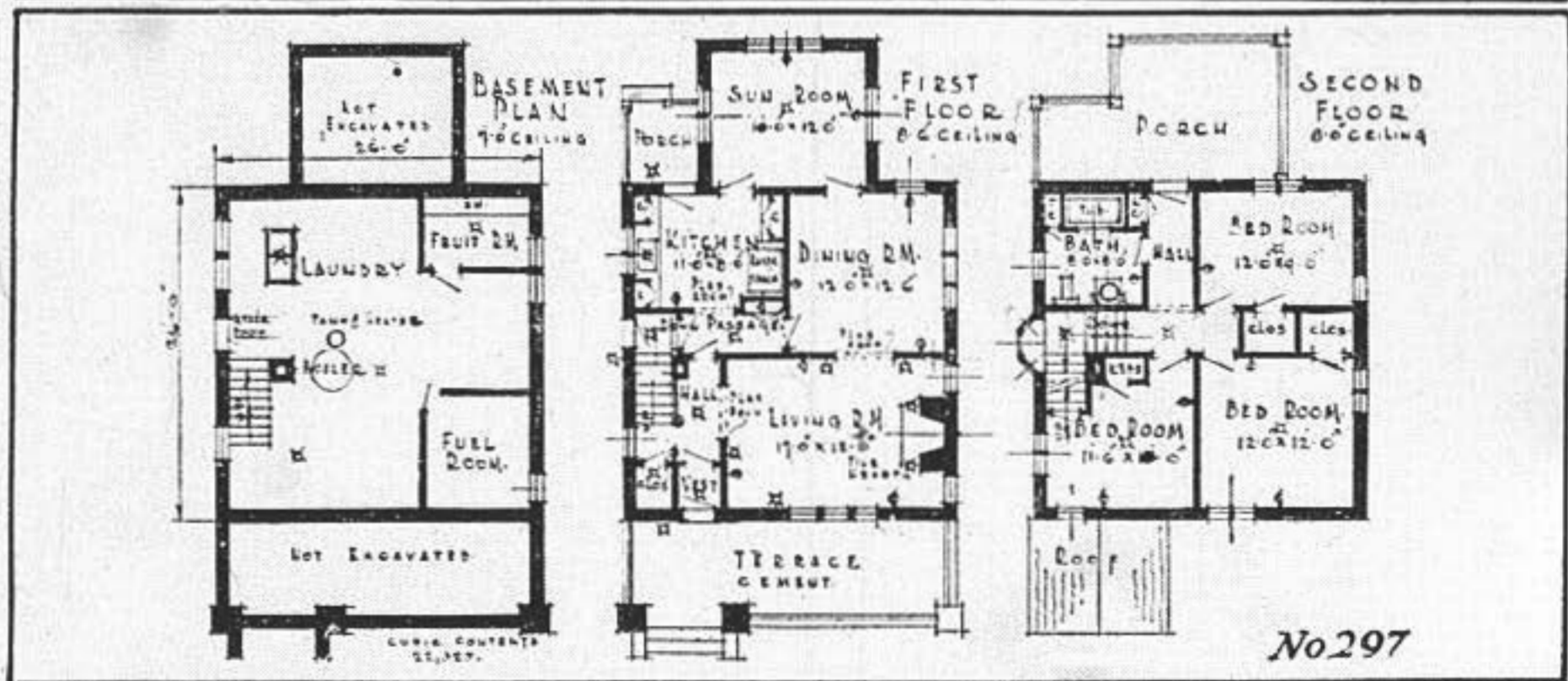
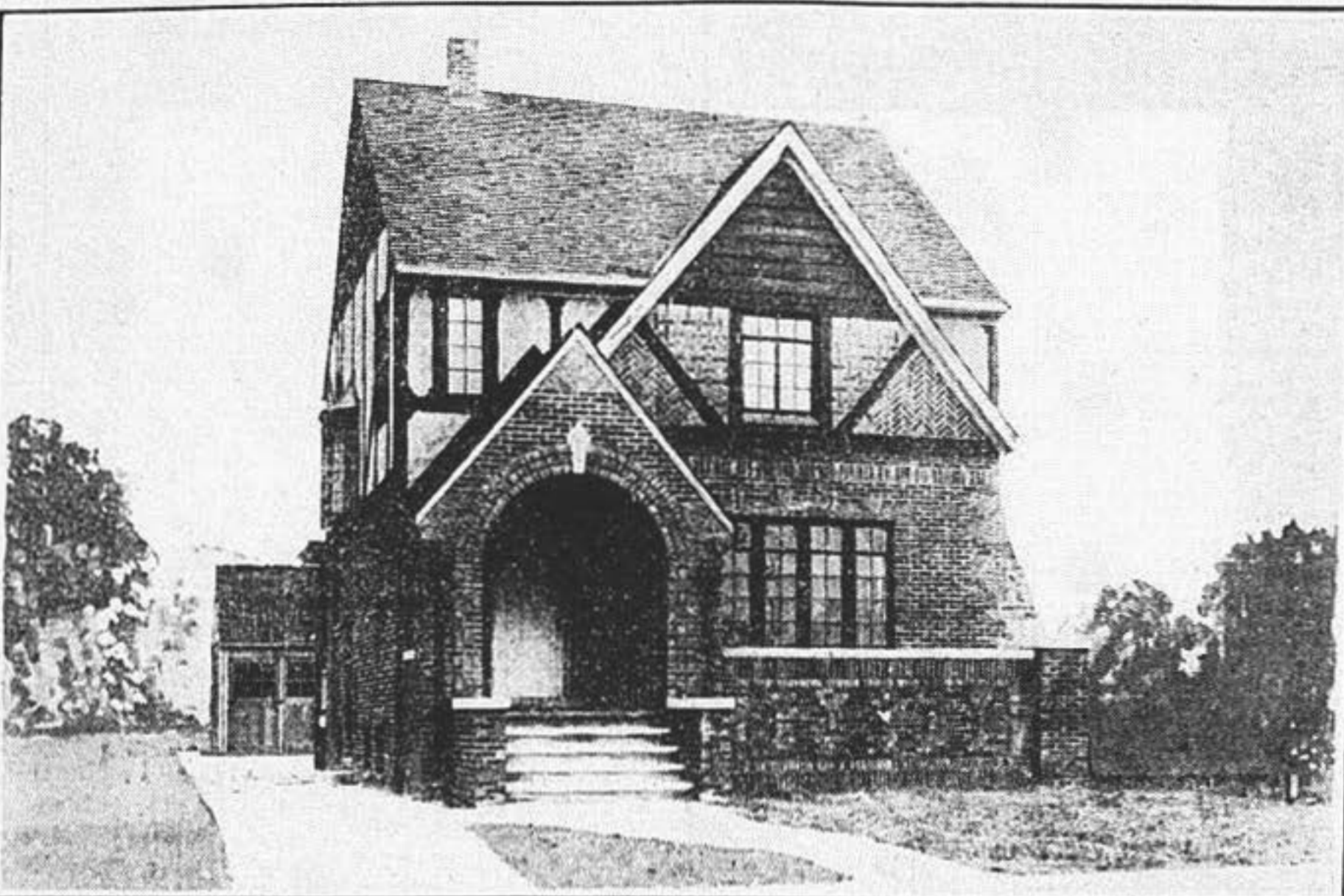
NAME of today's home:
The Flanders.

Plan number—Detroit News plan No. 297.

Construction—Basement walls of cement blocks, 12 inches thick, with 3/4-inch cement plaster, and waterproofed. Exterior walls pressed brick all around to belt line; second floor English panel stucco with cypress trim; gables wide cypress siding. Interior trim gunwood. Roof of stained cedar shingles in variegated colors laid staggered. Ornamental cast stone electric fireplace. Bathroom floor and walls four feet high of tile. Steel casement windows. Steam heating plant.

Average of bids made for The

THE FLANDERS - - - - - Detroit News Plan No. 297



THE outline of specifications for this home will be supplied without charge to any reader. In writing for them a two-cent stamp should be inclosed. Specifications must be considered in connection with price.

News Home Building Department by Detroit contractors for lot owners on the no-cash monthly payment plan, \$11,200, without garage and side drive.

Size of monthly payments, 1 per cent. Lowest bids and names of bidders supplied free by The News when plans are purchased.

Cost of architect-drawn specifications and blue prints, \$30.

Where plans are procurable: The Detroit News Home Building Department.

Special services available: (a) The Electric Extension Bureau of Detroit, 304 Lincoln Building, plans

the wiring on Detroit News houses according to the Red Seal plan, which is a simple and effective means of summing up the technical details of an electric wiring installation from the standpoint of efficiency. The Red Seal is a national trade-mark which specifies that the wiring meets the requirements that a home owner expects when building a modern home. The Electrical Extension Bureau will inspect the work before the lath and plaster are put on and advise if any mistakes have been made in the electrical plans, so that they may be corrected. It will again inspect the work when the job is completed, and if

the work meets the Red Seal requirements a Red Seal will be placed on the meter board. This service is free to readers of The Detroit News. This bureau is supported by the local electrical industry. It does not sell anything and does not do any wiring.

(b) Where warm air is specified

the heating survey on Detroit News floor plans indicating the location of the heater, warm and cold air pipes, registers and cold grille and all other heating requirements are made according to the specifications of the Standard Code of the National Warm Air Heating and Ventilating Association.

