

# UNBROKEN WALLS AND CEILINGS; ROOMS ARE

## Economical to Build; Has Air of Simplicity

This Home Is At 16775 Trinity Avenue, Just  
Off Grand River, near Six-Mile Road.  
Open Today.

By EDITH B. CRUMB  
(Interior Decoration Department)

Square and rectangular houses do not always afford the opportunity for adding the artistic exterior lines that are sometimes to be found on other types of architecture. But they do have the saving grace of walls and ceilings that are unbroken and rooms that do not give that cramped feeling.

Moreover, what is frequently more important, they are the most economical in construction. Plain walls and plain roofs are less liable to develop defects in construction than when they are cut up in intricate angles which sometimes make tight joints difficult.

Today's house, "The Redford," partakes of an air of simplicity both in its exterior appearance and interior arrangement. Yet the front with its stone steps, recessed doorway, extended English trim gable and casement windows with brick sills and caps, creates an individuality that will distinguish it from other houses.

The walls are faced brick to the belt line and the second story of shingles stained brown, while the peak of the front gable is finished in wide siding. The living room extending across the front has the stairway at one end and an electric fireplace at the other end.

The upper floor provides three bedrooms and the bath, each bedroom with an adequate closet. Double ventilation in each bedroom insures light and desirable sleeping conditions.

This home is located at 16755 Trinity avenue, off Grand River avenue near the Six Mile road. It was built by one of Detroit's larger building concerns from plans prepared by them in conjunction with The Detroit News Home Building Service and the Detroit Architects Small Homes Bureau.

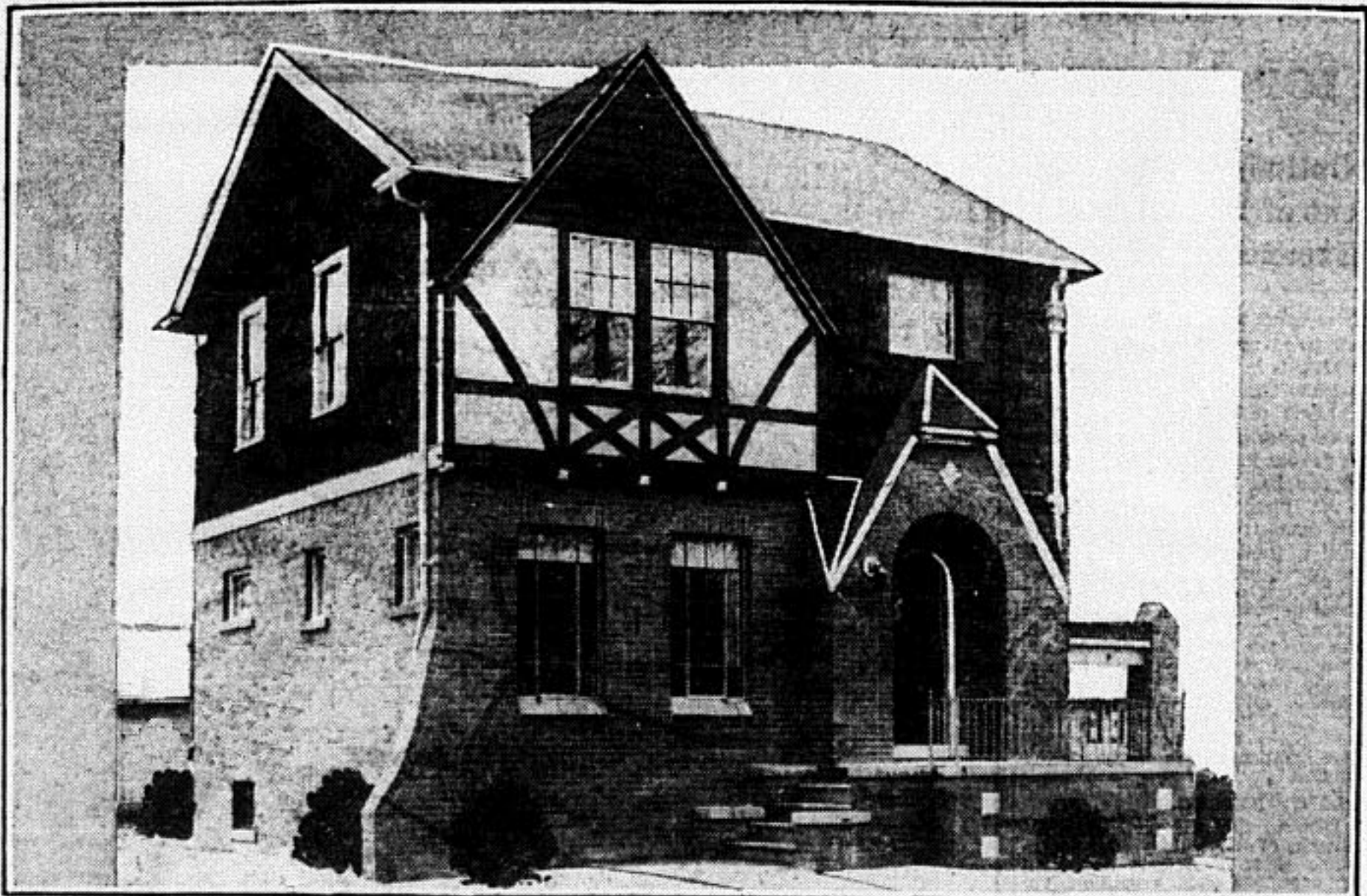
The house is being kept open for inspection for a limited time to

med top and bottom with lavender moire ribbon binding.

Bedroom over south end of living-room: Woodwork, ivory; walls, apricot floor covering, beige Wilton rugs in small sizes; furniture, mahogany and to consist of full-sized bed, dresser with separate over-mirror, dressing table, bench and upholstered chair with slip-covering of French blue ground flowered chintz; window treatment, gold and cream with gold predominating in glass curtain and drapery effect; bedspread, white or cream French marquise with a gold dot over gold sateen; dresser covers, same combination; electrical fixtures to be equipped with shades of gold chiffon over taffeta of the same color and trimmed top and bottom with French blue braid.

Rear bedroom: Woodwork, ivory; walls, light green; floor covering, oval braided rug mats in lavender, yellow, cream and black; window treatment, gold and cream curtains with gold predominating in glass curtain and drapery effect; furniture, walnut and to consist of full-sized bed, dresser, dressing table, bench, upholstered chair with yellow ground flowered chintz slip-

THE REDFORD - - - - - Detroit News Plan No. 299



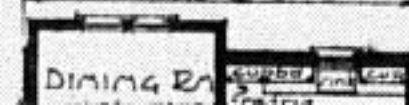
BASEMENT-PLAN

7'0" CEILING  
6 OPENINGS



FIRST-FLOOR-PLAN

8'6" CEILING  
20 OPENINGS



SECOND-FLOOR-PLAN

8'0" CEILING  
17 OPENINGS

