

FRIENDLINESS AND A REAL WELCOME RADIATE FROM THIS HOME

Large Living Room For Size of House

Located on Southfield Road Between Eight and Nine Mile Roads in Magnolia Sub-division. Open Today.

THE MAGNOLIA - - - Detroit News Plan No. 295

Now is the Time to Plant Spring Flower Seed

Fall Start Will Give Gardeners Cheerful and Colorful Growth by the Time Summer is Here.

By ANN MAYER.

GARDENERS no longer find it necessary to wait until spring to see their favorite annuals. The best are prepared and ready to be planted in the fall. The ground is not so cold in early fall as it is in the spring. The plants are prepared from seed and the soil is not so cold as in the spring. The plants are prepared from seed and the soil is not so cold as in the spring. The plants are prepared from seed and the soil is not so cold as in the spring.

GOOD FOR WINTER FEEL.

This fall is an especially good time to plant spring flowers. The ground is not so cold as in the spring. The plants are prepared from seed and the soil is not so cold as in the spring. The plants are prepared from seed and the soil is not so cold as in the spring.

A PARTY FLOWER.

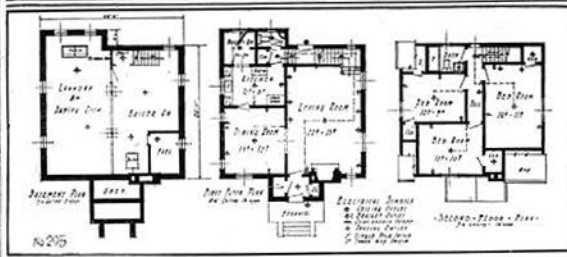
There is a party flower in every garden. It is a flower that is always ready to be seen. It is a flower that is always ready to be seen. It is a flower that is always ready to be seen. It is a flower that is always ready to be seen.

FOR THE CHILDREN.

A flower which interests both the boy and the girl is the daisy. It is a flower that is always ready to be seen. It is a flower that is always ready to be seen. It is a flower that is always ready to be seen. It is a flower that is always ready to be seen.

BESE OF SEASONS.

There are only a few days in the year when the sun is so bright and the air is so clear. It is a time when the sun is so bright and the air is so clear. It is a time when the sun is so bright and the air is so clear.



The outline of specifications for this home will be supplied without charge to any reader. In writing for them a two-cent stamp should be enclosed in addition to this ad.

THE MAGNOLIA OPEN TO PUBLIC

Insulation of homes cuts down fuel bills. Lack of proper insulation is the cause of many winter complaints. The Magnolia house is built with the latest insulation techniques to ensure a warm and comfortable interior.

INSULATION OF HOMES CUTS DOWN FUEL BILLS

Lack of proper insulation is the cause of many winter complaints. The Magnolia house is built with the latest insulation techniques to ensure a warm and comfortable interior.

COAL INDUSTRY STARTED BY LEAGUE OF NATIONS

The coal industry in Europe is being reorganized by the League of Nations. This initiative aims to stabilize the market and ensure a steady supply of coal for the continent.

COAL INDUSTRY STARTED BY LEAGUE OF NATIONS

The coal industry in Europe is being reorganized by the League of Nations. This initiative aims to stabilize the market and ensure a steady supply of coal for the continent.

By EDITH H. CRUMB (Interior Decoration Department). Here is a house that immediately makes friends with its neighborhood. The architecture of the exterior breathes the spirit of the modern, the tall brick chimney provides a deep recessed fireplace which is the focal point of the living room. The house is built on a slight rise, the front porch is a wide, open invitation to the street. The house is built on a slight rise, the front porch is a wide, open invitation to the street.

Cost of House and Service

NAME of today's home? The Magnolia. This modern Detroit News Plan No. 295. The house is built on a slight rise, the front porch is a wide, open invitation to the street. The house is built on a slight rise, the front porch is a wide, open invitation to the street.

Double front windows and side door. The house is built on a slight rise, the front porch is a wide, open invitation to the street. The house is built on a slight rise, the front porch is a wide, open invitation to the street.

Open kitchen and breakfast room. The house is built on a slight rise, the front porch is a wide, open invitation to the street. The house is built on a slight rise, the front porch is a wide, open invitation to the street.

AGE SAID TO IMPROVE BUILDINGS OF CONCRETE. The house is built on a slight rise, the front porch is a wide, open invitation to the street. The house is built on a slight rise, the front porch is a wide, open invitation to the street.

\$75,000 IS WOLF BOUNTY IN MINNESOTA THIS YEAR. The house is built on a slight rise, the front porch is a wide, open invitation to the street. The house is built on a slight rise, the front porch is a wide, open invitation to the street.

SECOND MORTGAGE FINANCING

Loans And Land Contracts. Quick action and specially liberal conditions. CENTURY INVESTMENT CO. 322 W. Fort St. Detroit

ANNOUNCING FULL PAGE COMIC SECTION in COLORS

And a Bigger & Better METROPOLITAN SECTION Beginning Next Sunday in The Detroit News

And a Bigger & Better METROPOLITAN SECTION Beginning Next Sunday in The Detroit News

6 Wonderful Homes

Including Three Detroit News Models Are Ready for Your Inspection Today!

Over 125 homes of all descriptions and price are under construction by Miller-Storm in all sections of the city—the finest collection of homes in Detroit. Visit one of the six ready for inspection today—no need to call for address of other type, just enter your name on the main office.

The College-View

Open For Public Inspection All Day Sunday Located at 17350 OHIO Ave. 1 1/2 Blocks North of Six Mile Road in the MARYGROVE COLLEGE SECTION

JOHN P. RABAUT 2116 Rock Tower CAVAN BROS. 8254 W. Middle Road

\$10 DOWN 2 YEARS PAY 100 PER CENT

Full description of the mortgage financing offer, including terms and conditions.

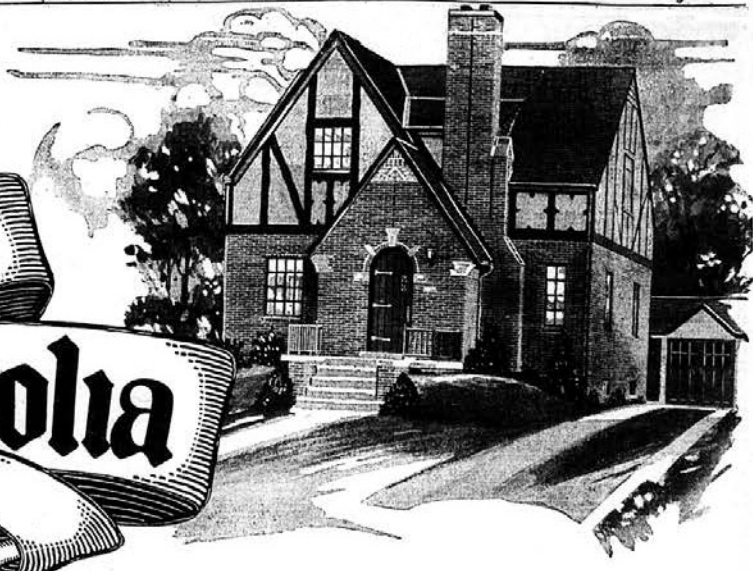
Full description of the mortgage financing offer, including terms and conditions.

Full description of the mortgage financing offer, including terms and conditions.

Open Today!

On the opposite page is a complete description of "THE MAGNOLIA"; also interesting comments on its furnishing and interior decoration.

The Magnolia



Built by
MILLER-STORM
"Builders of Good Homes"

A Detroit News Model Home in **Magnolia**

A 500-Acre Protected Community of Homes—Southfield Rd., Between the Eight and Nine-Mile Roads

AN exhilarating game of tennis. A vigorous center over bridge paths that lead deep into a country of hills and lakes. A starlit evening of skating. A round of golf, nine holes or so in the early morn at any one of a dozen nearby clubs.

This is Magnolia, the site selected for Today's Detroit News Model Home: "THE MAGNOLIA."

Drive out now and see this delightful new English residence. Drive through the great Southfield Park district, a huge protected residential area of 21 square miles.

The home you'll see is a strikingly new creation in English architecture. Designed by Miller-Storm, and built according to their famous Gold Seal specifications, it is indeed an architectural achievement of rare distinction. There is a pleasing newness about its beautiful exterior of colored rug brick, its picturesque half-timbered gables, and its sharp-sloping, Old English roof. And inside, too, is a charming note of individuality in its artistic hand-tinted walls, its hand-colored radiators, its novel brick-fringed fireplace, its scores of fascinating features.

This Detroit News model is indeed a fit companion for the many attractive new homes which now line the broad, stone-surfaced drives of Magnolia. Immediately will you appraise it at a figure far greater than the modest sum for which it

can be duplicated on your lot: Only \$12,700, financed, including a two-car garage.

Magnolia comprises 500 acres in Southfield Park. Thus it is doubly protected: First, by the restrictions of this entire district of 21 square miles; Second, by its own careful Hannan-planned restrictions which offer absolute protection against the unwarranted encroachment of business or industry.

The property borders FIVE important thoroughfares: Southfield Road, Eight-Mile Road, and Northwestern Highway (all super-highways) and Nine-Mile and Division Roads. Over these wide ribbons of concrete, it is quickly accessible both from the downtown business section and from Detroit's great industrial West Side.

Magnolia is also remarkably well located with regard to recreational and educational facilities. On the property itself are numerous community parks for tennis and other diversions; also the Magnolia Riding Club. Right next door is the polo field on Nine-Mile Road. Within a ten-minute drive are 25 popular golf courses, the Detroit Riding and Hunt Club, the lakes and playgrounds of Bloomfield Hills, Marygrove College, University of Detroit, Franciscan College, and the new Thomas Cooley High School.

You are cordially invited to visit Magnolia and its Detroit News Model Home—**TODAY or any day this week.** The home will be heated and open for your inspection from 10 A. M. to 9 P. M. Building experts will be on hand to answer questions.



From Woodward Avenue drive across the Six or Seven-Mile Roads to Southfield Road; then north to Magnolia Parkway (1/4 Mile Road). From Grand River Avenue, drive straight south on Southfield to Magnolia Parkway.



An efficient steam-heat plant has been installed. The Magnolia by the Cassingham Heating & Plumbing Co., through their careful installation of the boiler, strict joints, steam-tight pipes, and easily adjusted valves. Every detail has been checked so to give complete heating satisfaction.



In the Magnolia, J. L. Jones has planned the drainage work with a view to charm as well as utility. Careful attention has been given the proposition and color effects on porch and steps; the driveway and walkways and perfect drainage is delivered to the basement floor.



There will be no leaks and escape of water into the Magnolia. The Glass Tinting & Sealing Co. have properly protected the sash in the roof, the eaves, windows, and doors with sheet metal aprons, gutters and drain-spouts.



In the Magnolia, the medicine cabinet—product of The Ideal Cabinet Corp.—combines beauty and utility. Disarranged or rust-proof metal and beautifully finished in Duco finish, matches to the charm of the bathroom and conveniences.



An atmosphere of exclusiveness is given The Magnolia by the beauty of the carriage iron porch rail, supplied by Old Saratoga. The ornamental Wrought Iron Work. The interior and exterior are instantly appreciated.



Old Man Winter will never get his chilly hands beyond the doors of the Magnolia. The Weather-stripping, installed by the Glass Tinting & Sealing Co., has been so beautiful fitted. It is so constructed that the closing of the door effects an absolute seal against the strongest winds and hard-driven rain.

THREE OTHER DETROIT NEWS MODELS OPEN TODAY

1. "THE BRIDLE" - on Grand River near (Horseman-Spauldy Corp.) near off Grand River near Eight-Mile Road.
2. "THE PARKWAY" - in Range Park Addition (A. J. Yonker & Co.) just off Range Park at corner of Range Park.
3. "THE BLACKSTONE" - in Blackstone Park (near Jolly Laundry Co.) at Seven-Mile Road and College Highway.

HANNAN

GUY S. GREENE—President

Real Estate Exchange

3rd Floor—144 Lafayette Blvd. Cadillac 7700