

# THE ENTRANCE OF THIS HOME RADIATES A FRIENDLY

## There Is Variety, Too, Throughout the House

Living Room Space Increased and Upstairs Hallway Decreased by Stairway Arrangement.

By EDITH B. CRUMB,  
Interior Decoration Department.

HERE is a house that immediately radiates friendliness with its suggestion of welcome in the extension of the entrance beyond the front wall line. Moreover the tall brick chimney promises a deeply recessed fireplace which will do its bit of cheer on cold winter evenings.

And there is variety here, too, as shown in the grouping of the windows and the change from brick on the first floor to stained shingles on the second floor with the front gable in stucco with English panel trim.

Placing the stairway at one side of the house provides a considerable larger living room than is usually found in homes of this dimension, and it also makes available every foot

of floor space for living purposes. The same arrangement reduces the hall space on the second floor to a minimum.

Today's home, "The Pennington," is an exceptionally well balanced product of modern English architecture. The vestibule entrance to the home is large and roomy and contains a large guest closet.

The first floor arrangement consists of a good sized living room with antique cove ceilings and stipled walls. The dining room also has cove ceilings and textured walls accentuated with detail panel moulding. These rooms are well arranged for the attractive placing of furniture.

A large kitchen with tile sink and built-in cupboards and closets permits the utmost in convenience. A breakfast nook with textured walls enters off the kitchen.

A decorative stairway with wrought iron hand rail leads to the second floor which comprises three cheerful bedrooms, each of which permits of cross ventilation. The bedrooms are finished in the soft, graduated pastel tints. The bath room has tile floor and walls, recessed tub and shower with tiling four feet six inches high.

The basement contains an enclosed toilet, fruit room and coal room. The home is planned for a steam heating plant.

Here is a decoration and furnishing scheme that could be carried out in this home that would tend to make it harmonious in exterior and interior:

Living room: Woodwork, walnut finish; walls, rough plaster surface in an antique parchment color; floor covering, medium green Wilton made to cover the floor entirely up to the shoe molding; glass curtains

ecru French marquise; over-drapes, green ground cretonne with Jacobean design in copper, orange, rose lavender and black; furniture, sofa with covering of copper rep piped in green, a pair of extra pillows to be covered in Roman striped taffeta to harmonize with the colors in the drapery material; wing chair covered in copper ground glazed chintz, easy chair in striped frieze with green predominating, circular topped table (approximately 30 inches across the top), a pair of end tables, magazine rack and smoking stand; over-mantel decoration to be a mirror with a wrought iron frame finished in black; electrical fixtures to be equipped with mica shades.

Stairway and floor of second hall to be covered in carpet to match that of living room.

Dining room: Woodwork and walls like those in the living room; floor covering, copper Wilton; glass curtains, like those in the living room; over-drapes, black ground glazed chintz with floral design in orange, copper, bright blue, purple and green; furniture, walnut and to consist of oblong extension table, five single chairs, one arm chair, buffet and serving table; electrical fixtures to be equipped with mica shades.

Kitchen and breakfast room: Woodwork, light green; walls, cream; floor covering, green and cream linoleum; curtains, bright yellow organdie; furniture, bright yellow trimmed with black.

Green bedroom: Woodwork, ivory; walls, light green; floor covering, light green Wilton in small sizes; glass curtains, cream French marquise; over-drapes, light rose ground chintz with bouquet design in blue, lavender, yellow and green—these to be trimmed with pleated ruffles of light green chintz and hung from a rose pole with green rings; furniture, walnut and to consist of full size bed, dresser with separate over-mirror hung with green silk cord, small table, dressing table and upholstered chair with slip cover of the drapery material piped in green; bedspread and dresser scarfs, cream marquise with a green dot over rose sateen; electrical fixtures to be equipped with shades of rose chiffon over taffeta of the same color, trimmed top and bottom with a light green moire ribbon binding.

Orchid room: Woodwork, ivory; walls, orchid; floor covering, orchid Wilton in small sizes; glass curtains, cream French marquise; over-drapes, gold ground flowered chintz with orchid predominating.

Lavender room: Woodwork and walls, ivory; floor covering, oval braided rag mats in rose, blue, ivory and black; glass curtains, cream French marquise; over-drapes, blue ground chintz with Godey fashion print design in pastel shades; furniture, mahogany and to consist of four-poster bed, chest of drawers with separate over-mirror, dressing table with skirt of blue organdie over blue sateen, Martha Washington sewing table, window armchair and small foot stool arranged in cross-stitch needlepoint; covers for chest of drawers and dressing table to be of cream or white linen finished with a narrow crotched edge; bedspread, patchwork quilt in blue and white; electrical fixtures to be equipped with small flowered chintz shades.

Estimated cost completely financed on a 1 per cent monthly plan, on a free and clear lot, without garage and side drive, \$9,925.

Lowest bid and name of bidders supplied by The Detroit News when plans are purchased.

Cost and architect-drawn specifications and blueprints, \$30.

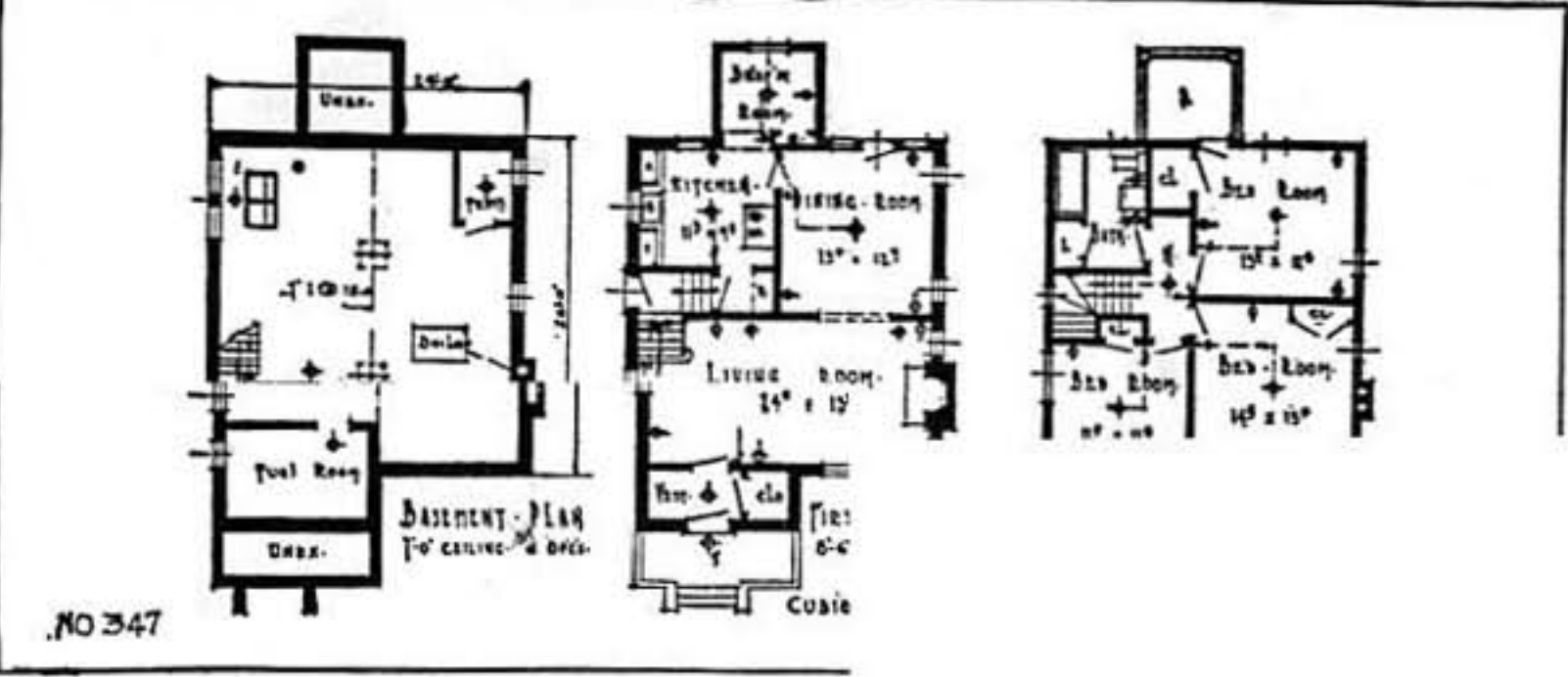
Where plans are procurable: The Detroit News Home Building Department.

Special Service Available — (a) The Detroit Edison Co. (Home Lighting Division), 3000 Second boulevard, arranges the wiring on Detroit News plans.

Adequate wiring is one of the most important items in building, for it makes convenience to the home maker and efficiency in the future management of the home. This plan meets the requirements that an owner expects when building a modern, up-to-date home of today.

The Detroit Edison Co. will inspect the wiring work before the

### THE PENNINGTON - - - - - Detroit News Plan No. 347



### Cost of House and Services

Name of today's home, The Pennington.  
Plan number, Detroit News Plan No. 347.  
Construction: Basement walls of cement block, 12 inches thick, water-proofed on exterior with one-half inch of cement plaster and asphalt paint. House 24 feet wide, 29 feet deep, over all, not including extension for vestibule and front steps or breakfast room. Will go on 35-foot lot with side drive. Front entrance, arched door, colonial in style. Exterior walls brick veneered on all sides on first floor to belt line. Second story stained shingles except front gable, which is paneled stucco with English trim of cypress. Interior trim sap gumwood downstairs, gum upstairs; woodwork to have three-coat finish and hand rub. Natural fireplace with tile hearth. Floor and walls four feet six inches high of tile in bathroom. All other floors select oak with three-coat finish. Flat rim sink, tiled in, with swinging faucet and built-in cupboard in kitchen. Walls and ceilings of living room, dining room, vestibule and stair hall antique plaster, stippled; bedroom walls and ceilings painted in tint; kitchen and bathroom walls painted. Steam heating plant installed according to National Heating Survey.  
Estimated cost completely financed on a 1 per cent monthly plan, on a free and clear lot, without garage and side drive, \$9,925.  
Lowest bid and name of bidders supplied by The Detroit News when plans are purchased.  
Cost and architect-drawn specifications and blueprints, \$30.  
Where plans are procurable: The Detroit News Home Building Department.  
Special Service Available — (a) The Detroit Edison Co. (Home Lighting Division), 3000 Second boulevard, arranges the wiring on Detroit News plans.  
Adequate wiring is one of the most important items in building, for it makes convenience to the home maker and efficiency in the future management of the home. This plan meets the requirements that an owner expects when building a modern, up-to-date home of today.  
The Detroit Edison Co. will inspect the wiring work before the

THE outline of specifications for this home will be supplied without charge enclosed. Specifications must be considered in connection with price.

lath and plaster is put on and if there are any corrections they may be made at that time. This service is free to the readers of The Detroit News. The Detroit Edison Co. does not sell fixtures or does not do any wiring.  
(b) Where warm air is specified the heating survey on Detroit News floor plans, indicating the location of the heater, warm and cold air pipes, register and cold grille, are made according to the specifications of the Standard Code of the National Warm Air Heating and Ventilating Association.

### One Acre in Manhattan Is Valued at \$40,000,000

FIGURING the value of Manhattan property on the acre basis, the result tells a story that borders on fairyland. The south corner of Wall street and Broadway, where the Irving Trust Company is erecting a building, is worth \$40,000,000 an acre on the basis of \$800 a square foot, the price reported paid. The two-acre Waldorf-Astoria site, Fifth avenue and Thirty-fourth street, cost the present owners \$16,000,000 and an acre at Fifth avenue and Forty-third street figured at \$340 a square foot, the price paid for old Temple Emanu-El, would cost \$15,000,000.

Louis O. Palmer, president of the Michigan Real Estate Association; Hugo J. Hesse, treasurer, and Max A. Ramm, a director, Wednesday attended a meeting of the board of directors of the association at Lansing.

### SAWDUST PILES IN MUD'S PLACE

Under-Water Carpenter Shop Installed in U. S. End of Tunnel.

Sawdust piles have taken the place of mud piles in one section of the Detroit and Canada Tunnel following the installation of an under-water carpenters' shop near the American harbor line.  
The under-the-river wood-working establishment, the only one of its kind in Detroit, has been set up in the first tube. As a result, sand-hogs have given way to carpenters and the rip saws whine where formerly all was mud and blackness. Fifteen men work 60 feet below the surface of the river on the many wooden forms needed in concreting the tunnel's interior.  
Much of the concreting is done with metal molds. Around the roadway, however, there are several places where molds must be made to order on the job. Hundreds of these are being made by the carpenters. The molds are constructed carefully, in order that they may be used again and again as the workmen proceed out under the river.  
Much of the heavier material

used came from the head timbers now on the way. Many of the pile feet, as they are called, are to be used in the tunnel.  
CUTRI  
A rate capl exce  
W. PA. DO. SAL. WY. PR.  
M

### IN BEAUTIFUL GROSSE POINTE



### A GOLF CLUB HOME