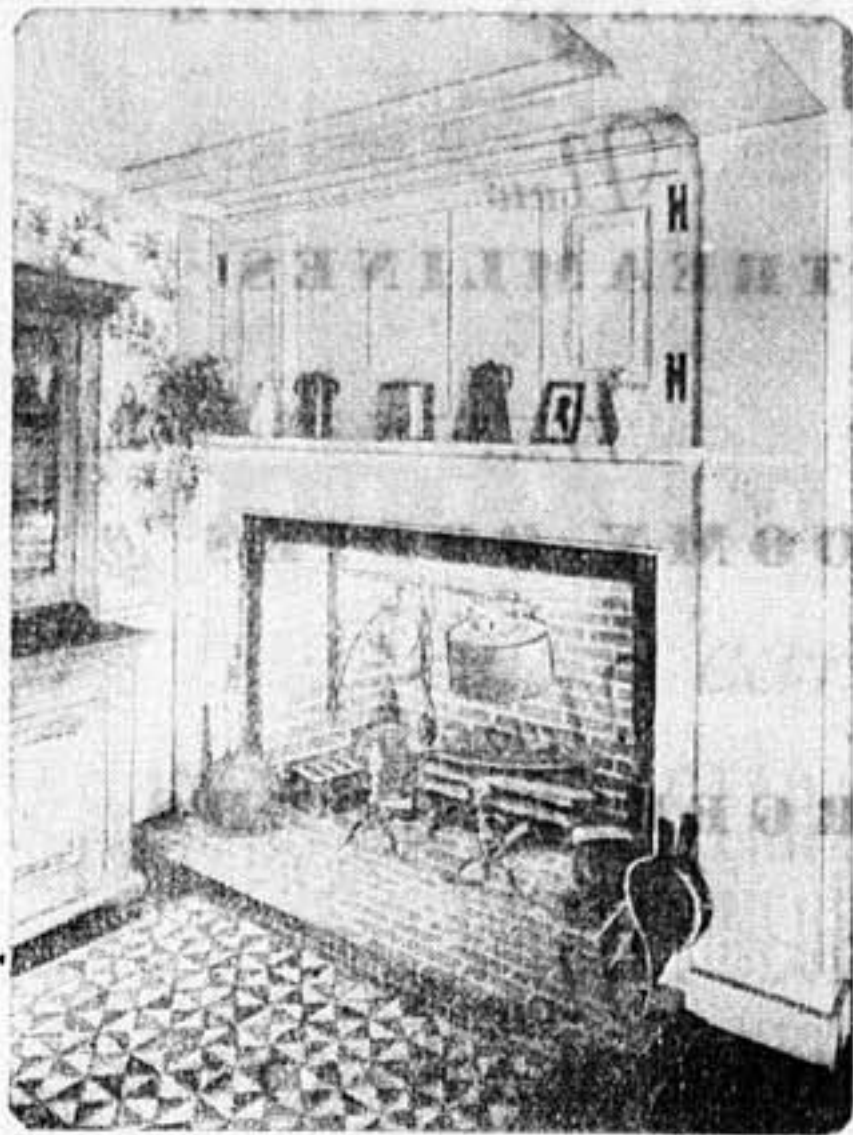


Beauty in the Home

By EDITH CRUMB



A GLANCE at a fireplace equipped in the manner of the olden times gives us more appreciation of our present day conveniences and comforts, and at the same time it is also very interesting to realize the contrast of the times.

In the illustration is shown a fireplace which not only served as the heating plant of the room, but also as the kitchen stove. There is the kettle for boiling water, the pan with broiler (in the corner), the strainer, skimmer and old iron kettle into which went the ingredients for a long, slow stewing of soup.

The bed warmer at the left of the fireplace is interesting. Into this large covered pan with a long handle were placed coals and it was then pushed around in ironing fashion between the sheets of the bed.

The bellows at the right encouraged dying embers and the little foot warmer at the side of the bed warmer was a comfort to those re-

turning from a long cold walk or ride.

It must not be forgotten that it was in front of the fireplace so many of the lovely old quilts were pieced, candles were dipped and shaped and the wool for all the clothing in the family was carded and spun.

Rugs were hooked, materials dyed and such duties as required warm hands and nimble fingers were carried on near the fireplace.

In the illustration is shown a portion of a room in a remodeled house, and it is easily seen that although there is a touch of restoration, yet the charm of the old equipment is still evident.

Bath Room Color Scheme.

Will you please help me make my bathroom more cheery? It is small, five by six feet, with one window facing south. What color shall I

Smart Oilcloth Shade And Dainty Crib Cover

DOESN'T a lamp shade made of oilcloth stir your imagination? And, wouldn't you like to have one of these very new and smart accessories to give your home an added touch of decoration?

The shade is a very attractive one and very easily made. With oilcloth made in so many colors and combinations it is possible to create many unusual shades of this material.

For the sun room, nothing could be more effective than a shade of oilcloth on a wrought iron lamp; and the breakfast room is another place where one would be appropriate.

Another article on this same leaflet is a coverlet of pink silk or sateen or a tiny printed material, which would be very lovely for a baby's crib. This is something that is also easy to make and such a dainty little thing!

Both of these articles are illustrated, amounts of materials given and every step in the making carefully described.

Anyone wishing this leaflet may have it by sending her request for it to the Beauty in the Home Department, The Detroit News, enclosing with it a self-addressed, stamped envelope.

paint the upper walls and also lower. What kind of curtains shall I use? The floor is terrazo. What color rug? MRS. C. Y.

The lower part of the walls and all of the woodwork in your bath room may be finished in a light shade of blue green, and the upper part of the walls and ceiling may be in a delicate apricot.

For the curtains use apricot orange, finished with plain hems, and the rug may be an oval braided rag mat in blue green, apricot, yellow, buff and black.

If you wish, the roller shade for this room may be of blue green

Hostess

L. K. EHLEN

kind of sandwiches would you suggest for an affair of this kind?

MRS. D. T. C.

Cheese and anchovy sandwiches are delicious, also a creamed mushroom mixture, and here are some more that are delectable for the bridge-tee; fruit sandwiches made of chopped figs, dates and lemon juice; cream cheese and chopped English walnuts or pimientos; chopped chicken or turkey and celery; tuna-fish salad sandwiches; almond and chicken sandwiches; Russian egg sandwiches, etc. It is always nice to have a variety when serving just the tea and sandwiches, and the bread should be cut thinly and the sandwiches made small and in dainty shapes. Cutters of various kinds may be purchased in the shops to make the party sandwiches more appetizing and they are very inexpensive. Will be glad to send you recipes for anything mentioned here if the request is accompanied by a self-addressed, stamped envelope. Colored cubes of sugar, and those in card suit shape in white made the tea more alluring and add a "different touch" to the party.

ENTERTAINING at an informal dinner on New Year's night and would like suggestions for table decorations and a menu K. F. W.

A silver bowl of red roses, tall black tapers in silver holders bowed with silver ribbon or tulle for the center of the table would be very smart. Clever little calendars could be used as place card-favors and these could be in the silver, red and black color scheme if you like. A menu that is adequate and not too elaborated could consist of: clock canapés, bouillon, roast turkey or goose, truffle gravy, parsley potato balls, molded cranberry jelly, creamed peas in pastry cases, braised parsnips, watercress and grapefruit salad or hearts of lettuce with Thousand Island dressing, molded New Year ice cream, salted nuts, crackers and cheese, coffee. If you are interested in receiving recipes for anything mentioned in this menu, kindly send request and stamped, self-addressed envelope for mailing.

Just for Company.

To put upon the couch or to stand up upon the floor, nothing could be more amusing than a very square and solid velvet elephant. These animals are about a foot high and come in black, blue, coral and violet velvet.

A man's first wife may be his ideal, but his second is likely to be