

# Should Fit Style and Type of Community

Proximity of Schools, Churches, Transportation and Retail District Must Be Considered.

By EDITH B. CRUMB  
Interior Decoration Department

WITH the increasing American tendency for families to move from one part of a city to another, or from one city to another, in pursuance of opportunity or to facilitate their working or living conditions, the question of whether their home will be readily salable is an important factor.

The proximity of schools, churches, transportation, a retail mercantile district and other factors which must be relied upon certainly should be taken into consideration. But in addition to this one should study the type and style of house that fits the community and the architecture that is prevalent at the time the house is constructed.

Perhaps the most apparent characteristic of the English home is the sharp roof-lines which are accentuated by the irregular paneling and exterior trim. This type of architecture has come down the ages and therefore has gone through the test which has eliminated about all the objections that anyone can bring up.

There is a charm that is dignified about the house that is shown today, and yet at the same time it is informal, creating qualities which lend a true home-like atmosphere.

The leaded glass windows throughout give an air of distinction. They are so arranged that the rooms will all be well supplied with daylight without the sacrifice of wall space, a combination not to be overlooked by the householder.

A large fireplace on the front of the house is a decorative feature and at the same time an indication that the living room will be one of warmth and cheer.

The grade entrance at the side has a French door instead of the ordinary type, thus making it possible to use this for a side auto entrance. From this entrance one may go direct to either the first floor hall or the recreation room in the basement.

Opening from the kitchen to the back porch is also a door of the French type which means that there is a cheery, bright kitchen.

Because of the difficulty often encountered with the curtaining of groups of casement windows the end windows of the groups may be made stationary, only the center ones opening in, thus avoiding any interference between the cloth and windows.

The various rooms may be carried out along various lines, but

with shades to match those in the living room.

**Sun-Reading Room:** This room has built-in book shelves and has groups of casement windows to harmonize with those in the rest of the house. The walls may be finished in a parchment color, the glass curtains of material to match those in the dining room and the over-draperies of copper ground glazed chintz. The furniture may be finished in blue-green trimmed with a touch of gold and black, the covering being of striped sunfast material in blue-green, copper, yellow and black; and practical yet attractive furnishings for this room may consist of a gateleg table, love seat, arm-chair to match, two Windsor arm-chairs and a couple of small foot stools covered in black ground flowered tapestry.

**Kitchen and Breakfast Room:** Woodwork, light green, tile walls white and black base; walls, ivory; curtains, light orange, trimmed with green binding or rick-rack braid; floor covering, black and cream checked linoleum; furniture, light orange trimmed with black.

**Second Floor—Room over hall:** This room has two unique features, one being that of a built-in dressing table with triple mirror and the other a door leading to a small space into which a sewing machine may be rolled when not desired, thus offering the opportunity for the creating of a delightful dressing room. The woodwork may be light walnut or ivory and the walls treated with an ivory ground paper with a rose polka dot; floor covering, soft rose Wilton; glass curtains, cream French marquisette; over-draperies, light rose and gold changeable taffeta; dressing table, beige draped

furnishings: The woodwork in the hall is to be in a light walnut shade, rubbed down to a piano finish; and the walls are to be finished in a light shade of café au lait with just a suggestion of an antiqued effect in the decorative border next to the ceiling being lighter than the walls.

The floor covering may be an Oriental rug in dark rich shades of wine red, old blue and a touch of dull gold; and the glass curtains of silk and wool casement cloth.

The stair runner may be of Chenille or Wilton in plain red to match the shade in the Oriental rug.

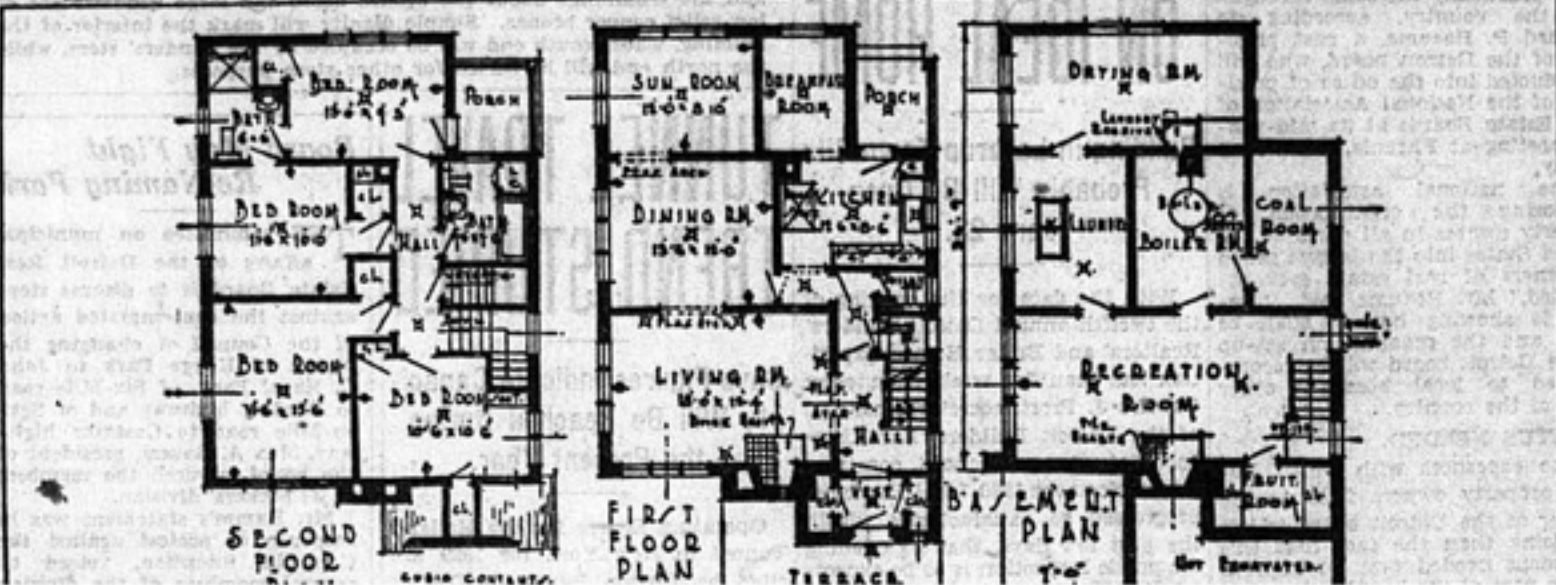
**Living Room:** Woodwork and walls to be like those in the hall; floor covering, beige Wilton or Chenille; glass curtains, ecru silk and wool casement cloth, made to draw; over-draperies, natural colored linen with Jacobean design embroidered in wool in blue green, copper, yellow, rose and black; these to be made long enough to reach to the floor, lined, interlined and trimmed with wool fringe and hung from a wrought iron pole.

The furniture in this room may consist of a sofa covered in blue green jasper rep; extra pillows for this being covered in Roman striped taffeta in blue green, copper, yellow and black; easy chair in covering of copper velvet; wing chair covered in the drapery material with seams piped in blue green linen.

A secretary, circular table with bulbous base, single chair with carved back and seat of cross-stitch tapestry; pair of end tables, small odd table to be used at side of wing chair; wrought iron bridge lamp with mica shade; table lamp with copper base and shade of plain parchment, with a yellow cast trimmed top and bottom with bands of blue green edged in black; pair of small lamps for the end tables which will be used in combination of the sofa, may have bases of dull yellow pottery and shades of beige chiffon over yellow taffeta, trimmed top and bottom with beige silk braid.

**Dining Room:** Woodwork and walls to be like those in the living room; glass curtains, also the same, and the over-draperies of blue-green ground printed linen in a conventional design. The floor covering may be of plain blue-green Wilton or Chenille.

The furniture may be walnut or oak and consist of refectory table, five single chairs, one arm-chair (the seats being equipped with pads of blue-green and gold antique velvet); large chest for buffet and smaller one for serving table. The electric fixtures may be equipped



THE outline of specifications for this home will be supplied without charge enclosed. Specifications must be considered in connection with price.

peach to match the tile; curtains and accessories to be ecru/rose blue. The two rear rooms and bath are arranged in a suite and may be used as a separate part of the house.

**Bedroom (rear) over dining-room and reading-room:** Walls, to be treated with a canary yellow ground paper with quaint bouquet design in lavender, rose, blue, green and a touch of black; glass curtains, like those in the other bedrooms; over-draperies, lavender silk broadcloth; floor covering, lavender Wilton rug in small sizes; furniture, walnut and to consist of full-sized bed, chest of drawers with separate over-mirror, table desk with hanging book shelf over this, magazine rack, single chair and upholstered chair with slip cover of yellow and lavender cross-bar gingham.

**Bedroom over kitchen:** Walls, painted in a light shade of green; floor covering, fawn Wilton; glass curtains, like those in the other bedrooms; over-draperies, light green ground flowered chintz bound with lavender satin; furniture, mahogany and to consist of simply de-

signed bed, small table, desk with book shelf over this, magazine rack, chest of drawers with separate over-mirror, single chair and Windsor arm-chair; bedspread, lavender linen or jasper striped sunfast maetrial trimmed with flounces of the drapery material; electrical fixtures to be equipped with shades to match those in the other rear bedroom.

**Rear Bath Room:** Tile, black; walls, canary yellow; curtains and accessories, yellow trimmed with lavender.

### J. LEE BAKER TO TELL OF 1930 REALTY OUTLOOK

"What 1930 Holds for Detroit Real Estate" will be the subject of an address by J. Lee Baker, Detroit realtor, before the monthly dinner meeting of the Women's Realty Board, to be held Monday at the Wolverine Hotel.

Mr. Baker will start to speak at 8 p. m., and all who are interested will be admitted to hear him without charge. Dinner will be served at 6:30.

