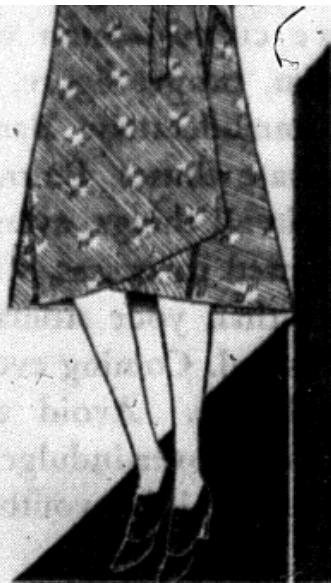


color coats after so many months of wearing a heavy coat! And they are really *surprising values!* Tweeds in monotone, bordered or ombre effects, and sports mixtures . . . many with collars of fox, wolf or lapin (dyed rabbit). Novel cuffs, careful tailoring and matching linings are features you will appreciate. Sizes 14 to 42 (but not in each style).

- .. *Belted Tweeds with Fur Collars*
- .. *Diagonal Tweeds with Capes*
- .. *Wrap-Around Coats with Tie Belts*
- .. *Plain Tweeds with Stitched Collars*

Clearance of Winter Coats
\$21.50 \$29.50 \$39.00 \$49.00

HUDSON'S—FIRST BASEMENT—FARMER



Wrap-around coat with
 Lapin (dyed rabbit) collar, \$25

Left, Banded
 Left, Garter
 Right, Corset

Special

Every man who n
 Medium weight suits
 sleeve style—ankle l
 able fit and long ser
 Sizes 36 to 46.

HUDSON'S

Boys' Sheeplined COATS, Special

\$5.65

Mothers will take advantage of this **SPECIAL OFFERING** because these coats are priced **MUCH LOWER** than regular. They are well-made blue **CORDUROY** and black or brown **LEATHERETTE** sheeplined coats with sheepskin collars and four pockets. Have warm, knit wristlets and full belts. Sizes 8 to 20 years.

FIRST BASEMENT—FARMER



SPECIAL!

**Printed
 QUILTS
 \$2.95**

Well-made printed **PATCH WORK** pattern quilts of enduring cotton fabric in a medium weight. In pastel shades to harmonize with the modern bedroom. Scalloped bound edges and sturdy stitching. 80x84-inch size. In Bedding Department.
SECOND BASEMENT—WOODWARD

Me O

Furth

*Dou
 Ove*

A new lov
 They offer
 promise of
 special em
 now and r
 fabrics. I



Sheeplined Coat
 of leatherette, \$5.65