

WINDOWS, ROOF AND CHIMNEY PROMINENT CH

Living Room One Side, Dining, Kitchen Other

Windows On Second Floor So Placed That Large Pieces of Furniture Will Not Appear Crowded.

TO THOSE who are seeking the formal rather than the informal style of house, the design herewith shown, with its prominent windows, steep roof and massive chimney should have a strong appeal. The arched windows are additional details to bring out the characteristics of the house, and yet with all these exterior features the interior is so laid out that it can be treated in a manner which will make it reminiscent of our early American architecture.

The center hall with the living room on one side and the dining room on the other makes an ideal first floor arrangement. The three bedrooms and bath on the second floor are so laid out that each room has cross ventilation. The windows are so placed that large pieces of furniture can be used without having the rooms appear crowded.

Either paint or paper would be appropriate for the interior of this house, and while the latter has been suggested for all but the kitchen and bathroom, if painted walls are preferred these may be treated in a color to match the one which predominates in the suggested paper. Before the paint is applied, however, the walls might be paneled with simple wood moldings and walls, woodwork and moldings painted in the same shade, no distinction being made as to the moldings, their mission being to relieve the monotony of large areas of wall space rather than to bring color into the scheme.

For those who would like a plan for the decorating and furnishing of this house the following suggestions are given:

Hall: Woodwork, cream; walls, scenic paper in soft shades of fawn and sand; floor covering, Oriental rug in soft, rich shades of rose, blue, green and beige.

Living Room: Woodwork, cream; walls, treated with an armure pattern paper in shades of sand and beige; floor covering, beige and very dark rich rose small repeat pattern; glass curtains, very coarse ecru fluted net; overdraperies, beige ground cretonne with large floral design in rich shades of rose, blue, violet, yellow and green, long enough to reach to the floor and put up with a flat-shaped valance; furniture, pair of love seats in very dark rose mohair or velvet; easy chair in striped linen frise, blue predominating; armchair with needlepoint seat and back, secretary, octagon table, approximately 30 inches across top; blue pottery lamp with accordian pleated glazed chintz shade; single Queen Anne chair for secretary; extra pillows for love seats to be covered in blue and gold changeable taffeta; over-mantel ornament to be a picture (ship scene) in very dull gold frame; mantel ornaments, brass candelabra (electrified) equipped with shades of ecru chiffon over amber taffeta, trimmed with ecru braid; center of mantel shelf to be occupied by a low amethyst bowl; bridge lamp of wrought iron and equipped with simple parchment shade; electric fixtures to be equipped with shades to match the candelabra shades.

Dining Room: Woodwork, cream; walls, treated with beige ground paper containing willow design in light, medium and dark blue; floor covering, plain blue Wilton; glass curtains, like those in the living room; overdraperies, blue and gold antique rep; furniture, large drop-leaf extension table, six single Hitchcock chairs, low boy, over-mirror for this, pewter candelsticks, Eberhart table, banjo clock; electric fixtures to be equipped with shades like those in living room.

Kitchen: Floor covering, blue and white large sized checked linoleum; woodwork and walls, light sand; inside of cupboards and drawers, pale yellow; curtains, yellow organdie bound with blue.

Front bedroom over living room: Woodwork, light ivory; walls treated with cream ground paper containing floral basket design in delicate shades of rose, blue, lavender, yellow and green; glass curtains, cream striped French voile; overdraperies, rose armure, in lattice design; floor covering, fawn Wilton; furniture, mahogany and to consist of four-poster twin beds, night table, glass lamp with rose chintz shade; high-boy, dressing table, single chair and upholstered chair with slip cover of rose linen, piped with blue; bedspreads, white dotted marquisette trimmed with frills of rose organdie; electric fixtures to be equipped with shades of cream chiffon over rose taffeta, trimmed with rose braid; dresser covers, to be made to match the bedspreads.

Bedroom over dining room: Woodwork, ivory; walls, treated with cream and silver satin striped paper; glass curtains, like those in first bedroom; overdraperies, apricot organdie finished with ruffles and put up with ruffled valance; furniture, apple green and to consist of spool bed, tall chest of drawers, skirted dressing table (skirt to be of apple green ground chintz with quaint bouquet design in rose, lavender and yellow); over-mirror to be finished apple green and hung with apricot silk cord, rocker with loose pad of apricot linen; bedspread, patchwork quilt in apricot and apple green gingham, pillow shams finished with tiny cot chiffon over apricot taffeta, trimmed with green braid; dresser covers, apricot linen hemstitched in apple green; floor covering, oval braided rag mats in apple green; apricot chiffon over apricot taffeta.

Rear bedroom: Woodwork, ivory; walls, treated with pale yellow and silver small repeat pattern paper; glass curtains, like those in other bedrooms; overdraperies, soft old blue ground cretonne with floral design in rose, lavender, yellow, orange and green; floor covering, soft old blue Wilton; furniture, ivory and to consist of single bed dresser, small table desk, single chair and upholstered chair with slip cover of the drapery material; bedspread, blue linen trimmed with frounces and bands of the drapery material; dresser covers, blue linen finished with cream ruffled footings, edged with yellow; electric fixtures to be equipped with shades of yellow chiffon over yellow taffeta, trimmed with blue braid.

Bathroom: Woodwork, cream; walls, light coral; curtains, coral organdie edged with jade green.

Cost of House and Services

NAME of today's home—The Ralston. Plan Number, Detroit News Plan No. 418.

The home to be 29 feet wide 77 feet deep. Will go on a 40-foot lot with side drive.

Basement walls of cinder concrete blocks 12 inches thick, waterproofed with plaster and asphalt paint on exterior.

Exterior walls of reclaimed brick on all sides to roof lines with stone and brick trim around windows and doors and cut stone corners.

Interior trim gumwood downstairs, pine upstairs, backband.

Wood shingles, vertical grain, non-curl, stained in color to match.

Bathroom floor and walls four feet high tile; six feet around overhead shower.

Walls of living room, dining room in antique plaster, stippled, with coved ceilings, kitchen and bathroom walls painted.

Bedrooms hard finish plaster painted with panel motifs. All ceilings throughout, house painted.

Warm air heating plant with cold air returns.

Cost on free and clear lot as shown with two-car garage and side drive, on one per cent monthly payments, \$7,525.

Cost of architect-drawn specifications and blue prints, \$30.

Where plans are procurable: The Detroit News Home Building Department.

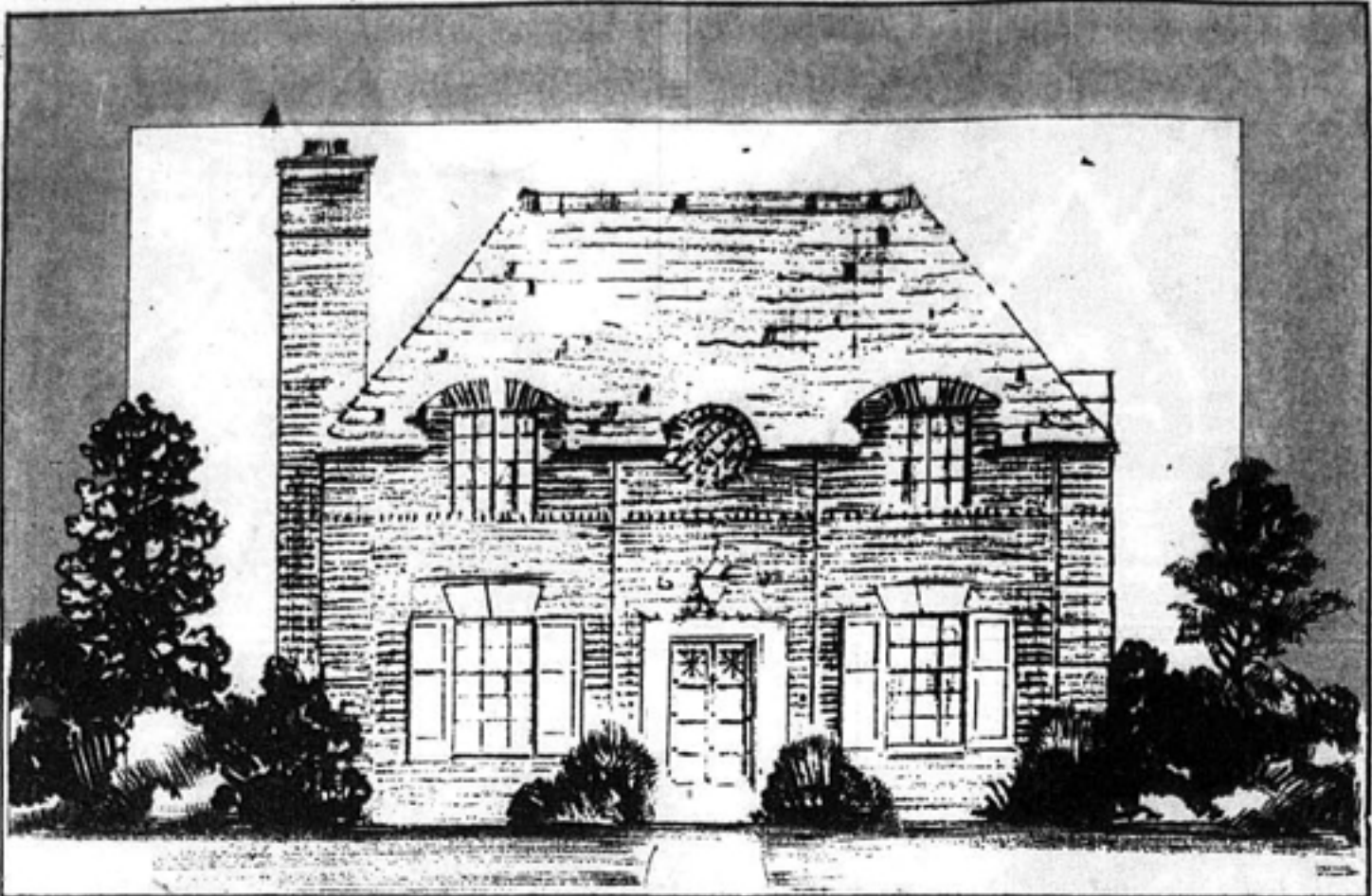
Special service available: (a) The Detroit Edison Co. (Home Lighting Division), 2000 Second boulevard.

Adequate wiring is one of the most important items in building for it makes convenience to the homemaker and efficiency to the future management of the home. This plan meets the requirements that an owner expects when building a modern up-to-date home.

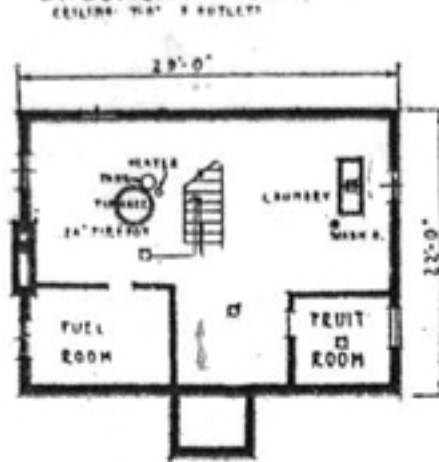
The Detroit Edison Co. will check the wiring work for adequacy and proper outlet locations before the lath and plaster are put on, and if there are any corrections they may be made at this time. This service is free to the readers of The Detroit News. The Detroit Edison Co. does not sell fixtures or does not do any wiring.

When warm air is specified the heating survey on Detroit News floor plans, indicating the location

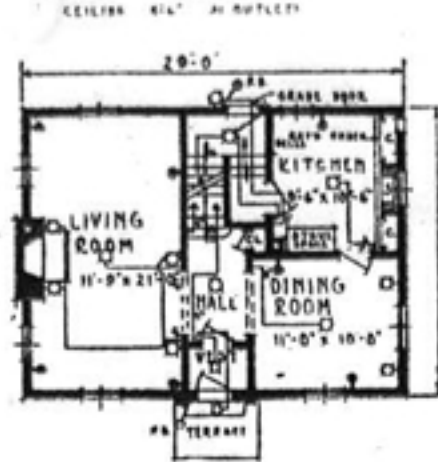
THE RALSTON - - - - - Detroit News Plan No. 418



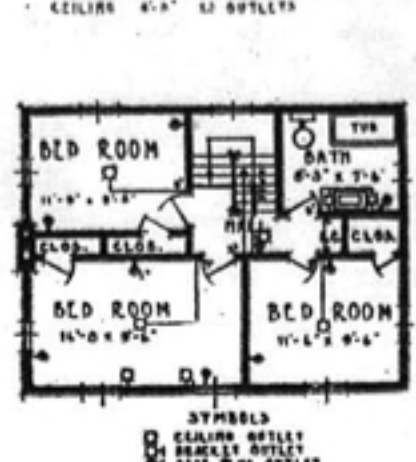
BASMENT PLAN



FIRST FLOOR PLAN



SECOND FLOOR PLAN



No. 418

CUBIC CONTENTS 4,845

SYMBOLS
 □ EQUALIZER OUTLET
 ○ BREAKER OUTLET
 □ CASE PLUG OUTLET
 ○ WARE OUTLET
 ○ SWITCH

THE OUTLINE of specifications for this home will be supplied without charge to any reader. In writing for them, a two-cent stamp should be enclosed. Specifications must be considered in connection with the price. Reprints of plans published each Sunday for the past eight years are kept on file for free distribution. They can be selected from sample books which are accessible at the main office, Lafayette and Second avenues, or the Public Service Bureau, Majestic Building.

of the heater, warm air pipes and cold air returns, is made according to the specifications of the Standard Heating & Ventilating Association.

SWEDISH ARCHITECTURE ON VIEW AT EXPOSITION

The first exhibit of contemporary Swedish architecture, brought to this country, has been given prominent space in the Architectural and Allied Arts Exposition, which was opened Saturday at the Grand Central Palace in New York and is to continue until next Saturday. It includes photographs of representative works of 40 prominent Swedish architects.

During the course of his recent trip to Sweden, Francis Keally, New York architect, made a number of sketches showing the architectural masses of modern Swedish buildings. He was deeply impressed by the studies of masses and vertical lines which he found, its application to such a building as the Flour Mill for the Stockholm Co-operative Building one of his greatest surprises.

The Engelbrekt Church in Stockholm, built about 17 years ago by Israel Wahlmann, architect, which is said to be the first example of the modern Swedish architecture, was particularly interesting as a study of masses. The church, built on a rocky site, dominates that entire section of the city. Of especial interest to Mr. Keally was the very evident Russian influence in the beautiful detail of its adjacent parish house.

Stockholm's twin skyscrapers, 12 stories high, flanking the main thoroughfare and connected by a pedestrian bridge, are the subjects of another of his sketches, and the Stockholm Library, built nine years ago by Gunner Asplund, architect,

also appealed to the visitor as a study of masses. The library has a cylindrical reading room and board terraces over rows of street-level shops on either side of the entrance.

How To Save Fuel Oil.

When a home heated by an oil burner is being "alred" in cold weather set the thermostat control at 55 or 60 degrees before the windows are opened. When the airing process is completed and the windows closed, set the thermostat indicator back to its former position. This saves fuel.

Heating Plant Must Fit.

Builders of new homes seriously jeopardize the pleasure of home-ownership by unwisely economizing on heating plant installation, warns the Holland, Mich., Institute of Thermology. To render the highest efficiency, a heating system must "fit the house" and be correctly installed; otherwise there will be fuel waste and discomfort. An undersize, incorrectly installed system menaces health and safety.

The cost of education in New York state rose 15 per cent in 1930.

Dearborn Bonds on Market.

The first series of bonds that the City of Dearborn will have placed on the open market since the incorporation of the city has been authorized by the council. Dearborn bonds totaling \$890,000 are being advertised and bids will be received April 21 by the Council.

REPOSSESSED BARGAIN

Beautiful Virginia Colonial

