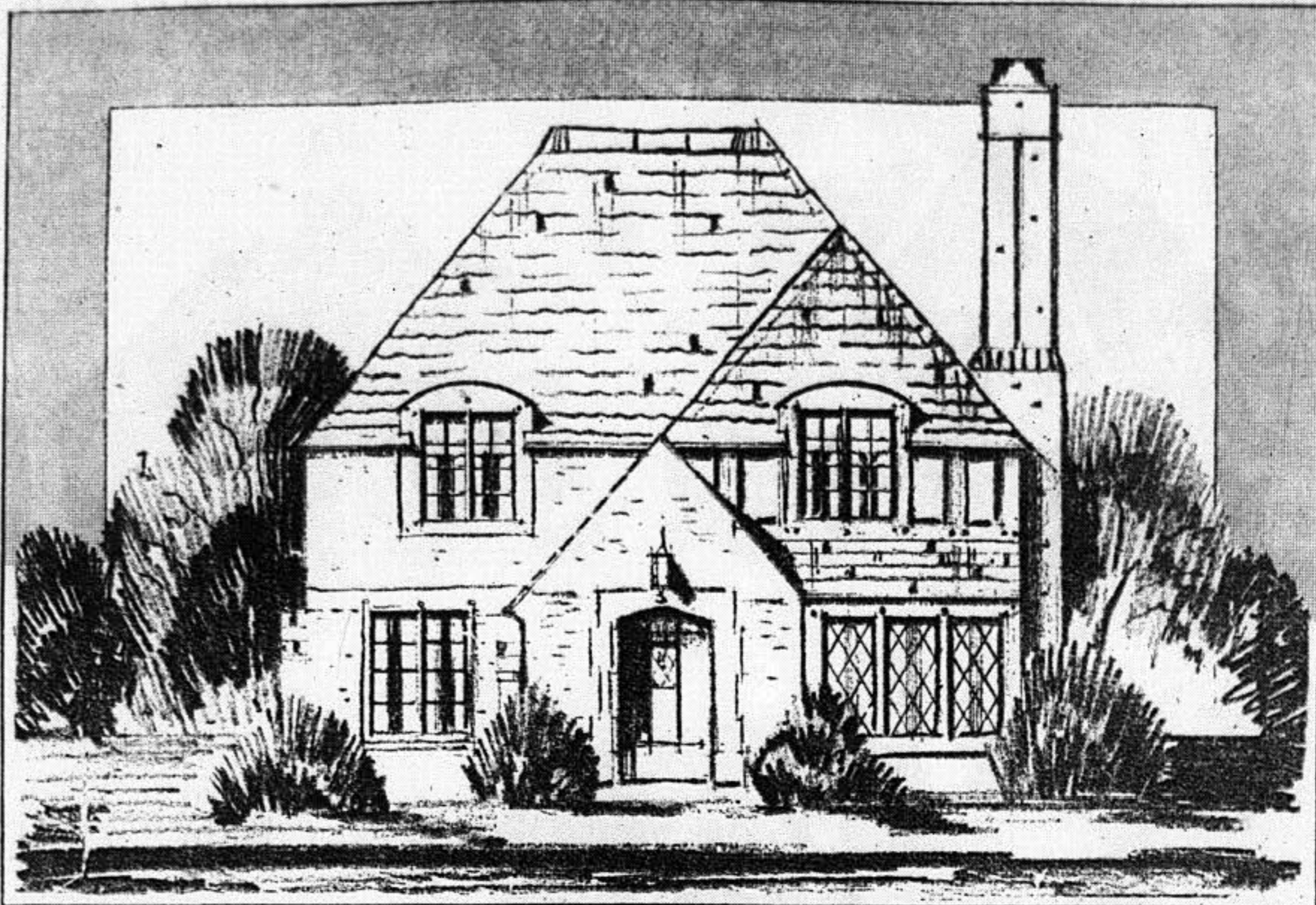


# COZY AND ATTRACTIVE HOME SUITABLE FOR THE

## House Well Balanced; Lines Unusually Good

THE RYERSON - - - - - Detroit News Plan No. 427

This Seven-Room Home Complete to the Last Detail Is an Excellent Example of Utilizing Every Foot of Living Space.



COTTAGE type homes with sharp angles and prominent openings are always attractive and they are gaining more and more in popular favor. While in a general way of speaking they are all somewhat alike, there is always a difference. It is the similarity in the treatment of gables and roof lines that leaves the impression with you. When you place them side by side it is quite surprising how wide the variations really are.

Sharp gables and steep roofs are invariable features of this type with occasionally chimneys of unusual construction. The chimney can be made to add tremendously to the appearance of the home. Many people have not yet come to a realization of the decorative possibilities and in consequence the average chimney is merely a rectangular upthrust of brick wholly without beauty.

The design shown today is one which becomes more and more pleasing the longer you consider it. The lines are distinctly good. It is well balanced. The chimney adds to the charm and an unusual entrance also helps.

### Cost of House and Services

A more satisfying home for a small family would be difficult to plan and build unless at a much greater cost. The floor plan is an excellent example of utilizing every foot of living space to the best advantage. The living room is large, the dining room ample, the kitchen well appointed and the arrangement of the bedrooms and bath ideal.

Here are suggestions for decorating this home which would make it so pleasant and harmonious that it would satisfy the most exacting:

Living Room: Woodwork, to be finished in a rich walnut shade; walls, to be painted in a light shade of cafe au lait; floor covering, rust colored Wilton; glass curtains, ecru casement cloth, made to draw; over-draperies, rust ground cretonne with floral design in blue green, orange,

NAME of today's home — The Ryerson.

Plan Number, Detroit News Plan No. 427.

The home to be 27 feet 8 inches wide and 29 feet 3 inches deep, not including front terrace, vestibule or projection of sun room. Will go on a 40-foot lot with side drive.

Basement walls 12 inches thick, common brick outside, white sand and lime brick inside, waterproofed with cement plaster and asphalt paint.

Exterior walls on first floor, on all sides, face brick veneer. Front of second floor stucco with English panel trim in front gable.

Steel casement windows and sash throughout house with plaster jambs; stone sills and caps on first floor.  
Chimney brick same as house.

