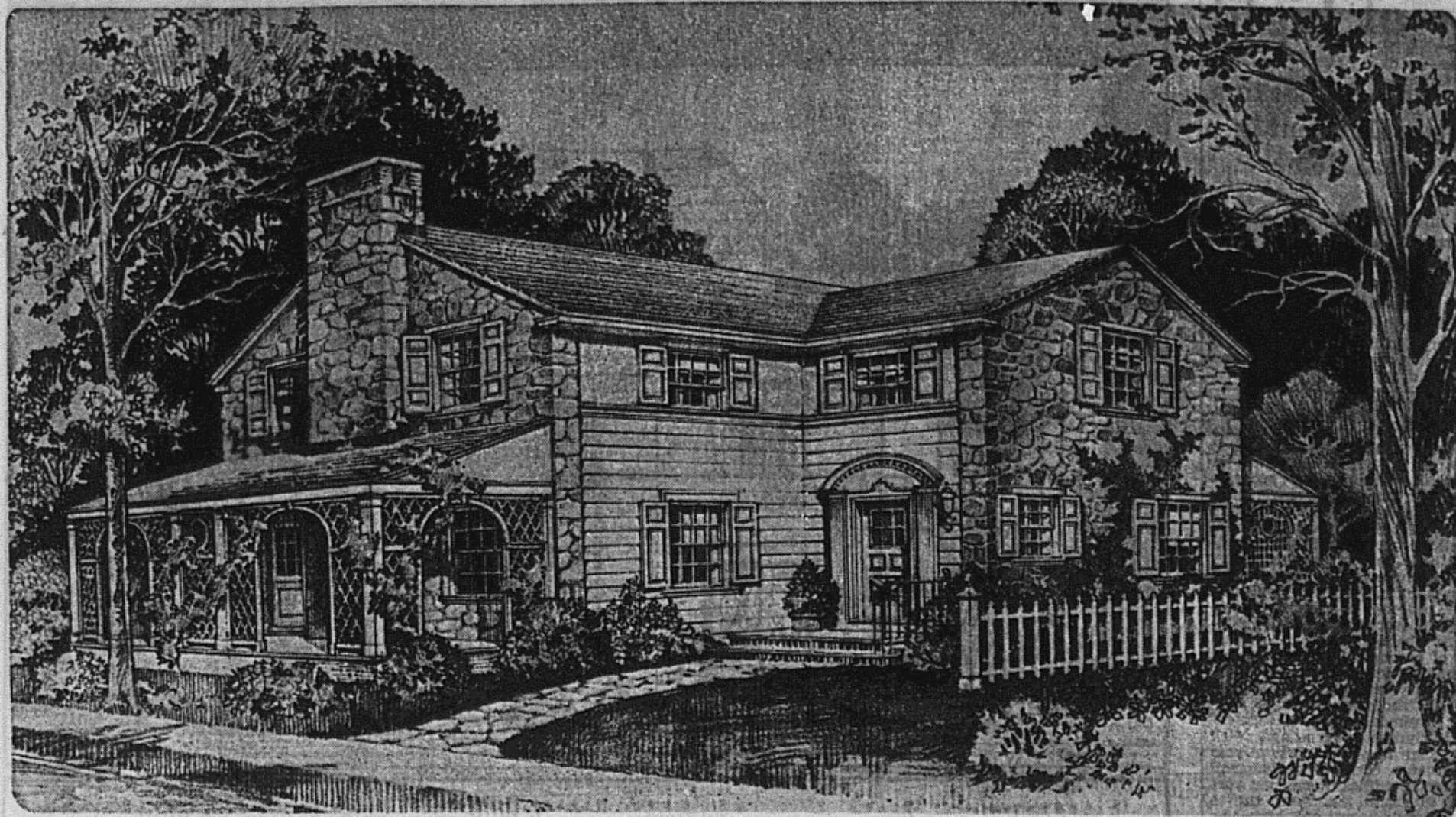


1932 Ideal Home To Be of Early Michigan Colonial Style



SUKERT & CORDNER, selected by the Detroit Chapter, American Institute of Architects, to design what will be the main show object of next year's Detroit Builders, Realtors and Better Homes Exposition, have chosen a type of house the exterior of which will remind of those homes which were the abodes of the sturdy New England families which settled in the Middle West, the interior of which, however, is to be "the height of comfort for its future occupants." The home whose erection is to start at once, will stand on the 45 by 130-foot lot, No. 364, Magnolia Parkway, in Hannan's Magnolia subdivision, one of the choicest suburban residential sections, located just north of Eight Mile road and served by Southfield road and Northwestern Highway. Completion of the home is scheduled for early February.

height of comfort for occupants and guests."

HOME OWNERS LEAD IN THRIFT

POINTS TO DUTY OF ARCHITECTS

Ideal Home To Be Just