

SNOWBALL Quilt Pattern

Pattern furnished through courtesy of the Mary A. McElwain Quilt Shop, Walworth, Wisconsin

Quilt is four blocks wide and five blocks long. Piece 20 blocks, using the block shown in detail for your color scheme, and join them block to block. After blocks are sewed together, stitch on a four inch band of color all around quilt, then an eight inch band of white. Bind in color.

Tear the blue and the white bands from the side of your material before you start cutting your small pieces.

Size—about 88 x 102

Suggested colors—

Blue and white, pink and white, or green and eggshell - any two well contrasted colors.

Material required—

8 yards of white

7 yards of color

Quilting Suggestions: Using Lockport's Two Star or Priscilla Cotton Batt, depending on size required, No. 70 quilting thread with No. 8 or 9 Between quilting needles, quilt each side of all seams in the patch blocks, this will show up beautifully on the lining side as double checking. On the border use Lockport's quilting stencil plume No. 94 with corner No. 90 for continuous plume all around as pictured. Put one inch square checking diamond style in all the large patches connecting the snowballs, letting the checking extend through the colored band and to the edge of the quilt except where the plume quilting is used.

May we wish you much pleasure, success and satisfaction with your quilt work.

True cutting insures true seams. Accurate chrome plated steel cutting pattern with handle available for small snowball design with sandpaper on the back to prevent slipping, and with the corners cut especially to aid in keeping seams the same width. 75¢ at McElwain Quilt Shop, Walworth, Wisconsin. Other sizes available, send stamp for chart.

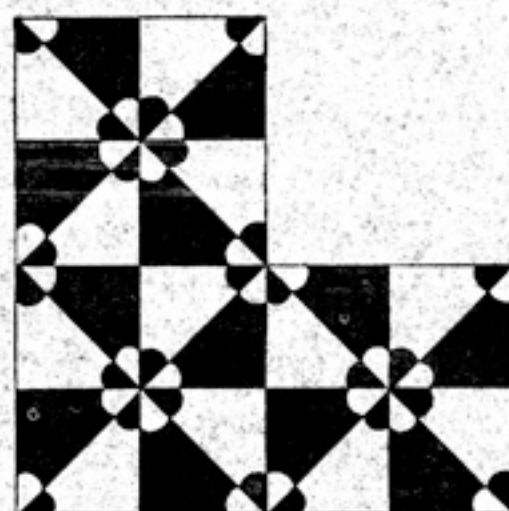


DIAGRAM FOR SETTING TOGETHER

cut:

80 WHITE
80 COLOR

seams allowed

one inch checking

cut:

160 WHITE
160 COLOR

seam: allowed

No. 90—5-Inch Corner
For use with No. 94

No. 94—5-Inch Border
For use with No. 90

