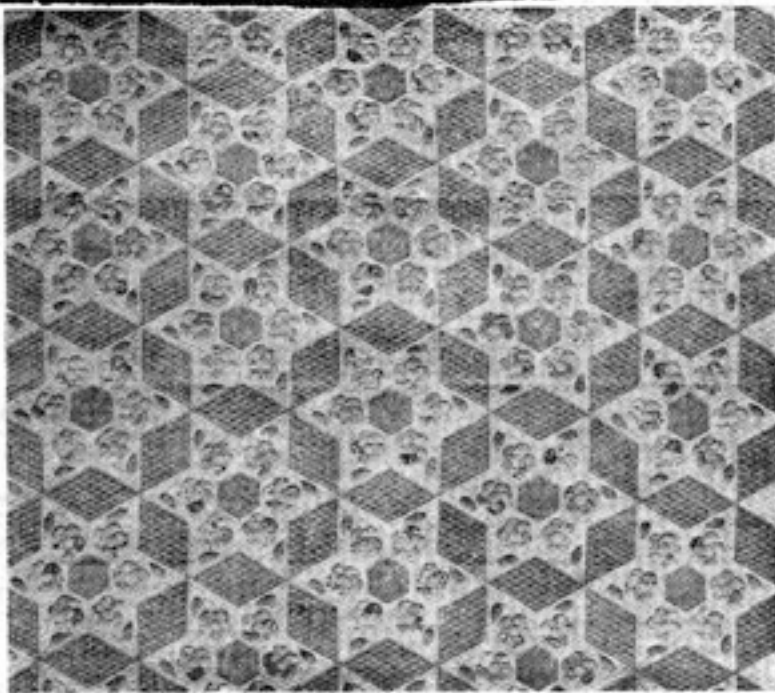


DESERT FLOWER Quilt Pattern

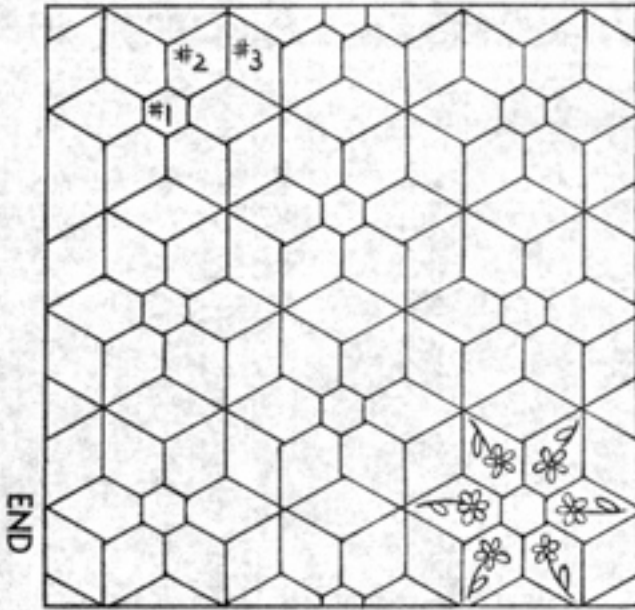
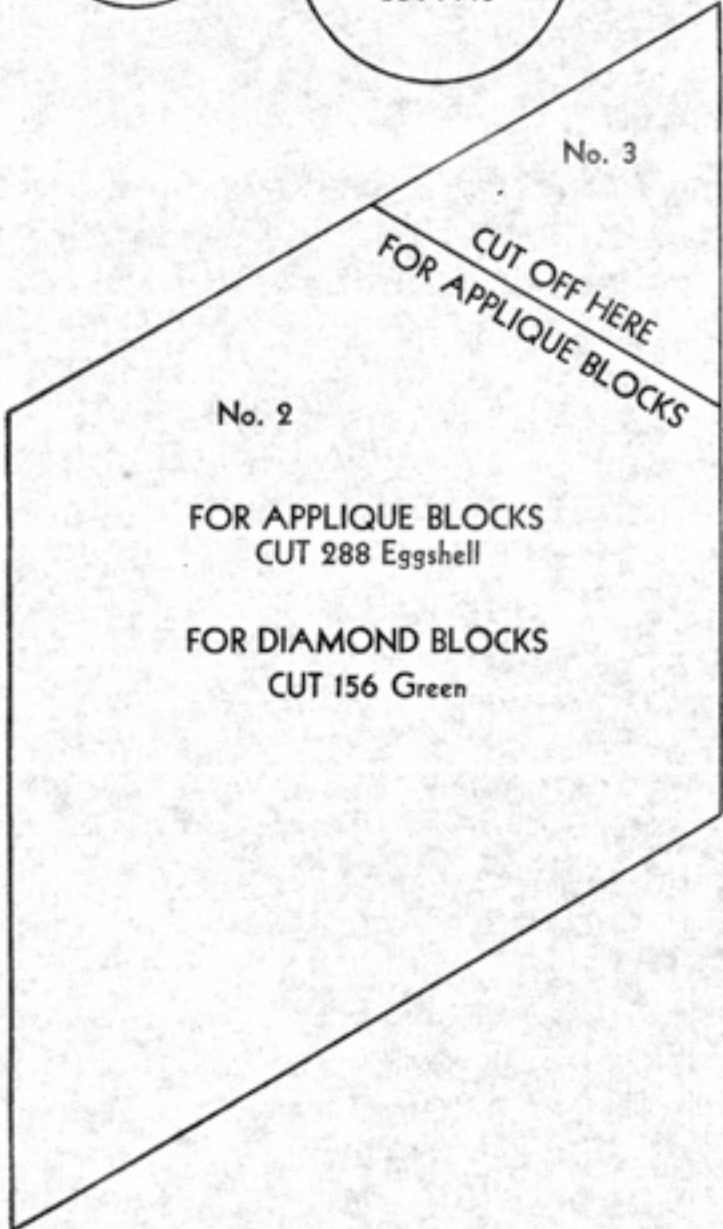
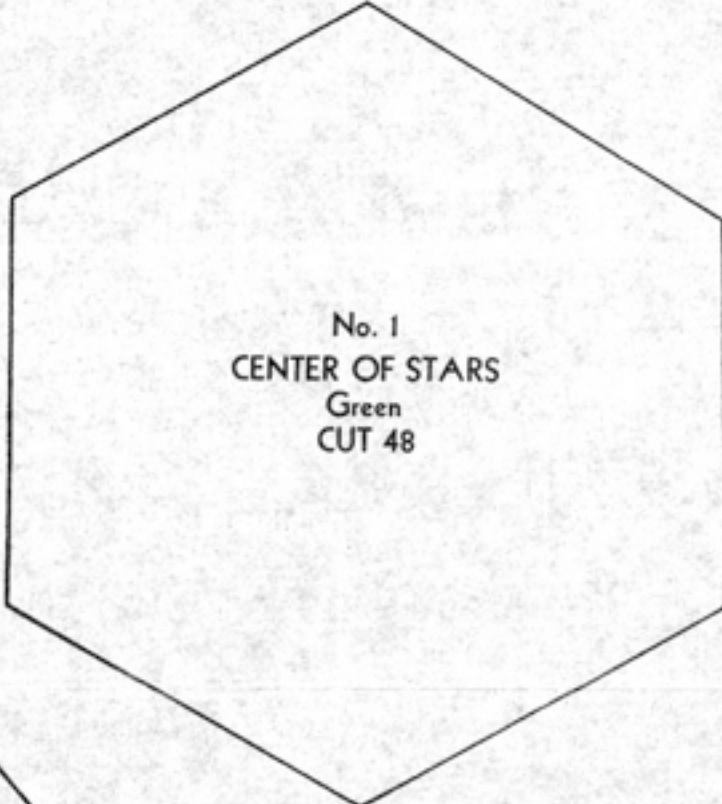
Pattern furnished through courtesy of the Mary A. Mc Elwain Quilt Shop, Walworth, Wisconsin

There are 48 star blocks in the quilt, 6 blocks wide and 8 blocks long. Put a 2" band of green all around. This makes quilt about 88" by 102" when finished. Material required: 8½ yards of green. 7 yards of eggshell. ½ yard for centers. 4½ yards various prints.



CENTERS
Yellow
CUT 288

PETALS
Print
CUT 1440



END

SIDE OF QUILT