

To assure complete satisfaction, be sure to specify  
**PRIDE or PRISCILLA batting**

opening full size of quilt, 72x90 inches.

» » »

For those wishing to make a larger quilt, inquire for

**TWO STAR**

opening in a thin, even sheet, 84x100 inches.

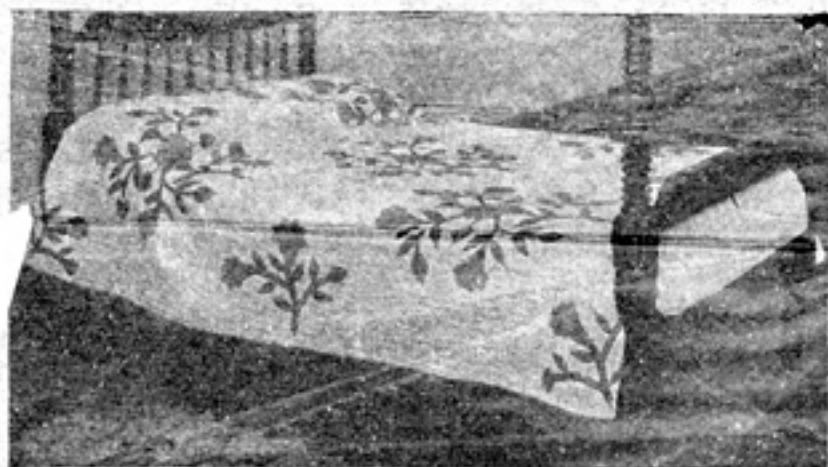
ALSO

**DIXIE MAID WADDING BATT**, one piece full quilt size

A beautiful white and smooth sheet that is sure to please.

**ROCK RIVER COTTON CO.**

JANESVILLE, WIS.



**ROSE PATTERN OF 1840**

Pattern furnished through the courtesy of the Mary A. McElwain Quilt Shop, Walworth, Wisconsin.

Cut enough pieces for one block. Arrange them diagonally on a thirty inch square of white material placing the larger red medallion in the center, and the stem toward the lower corner of the block. Arrange the buds and sprays equally distant around the medallion, as shown in picture. Make five of these large blocks, four half blocks (one for each side, center, top and bottom, four quarter blocks for the corners. Join all of them diagonally. If desired, a strip of material may be added at top and a spray effect may be applied, using same patterns.

Material required: 3 yards each of green and red, 8 1/2 yards of white.

