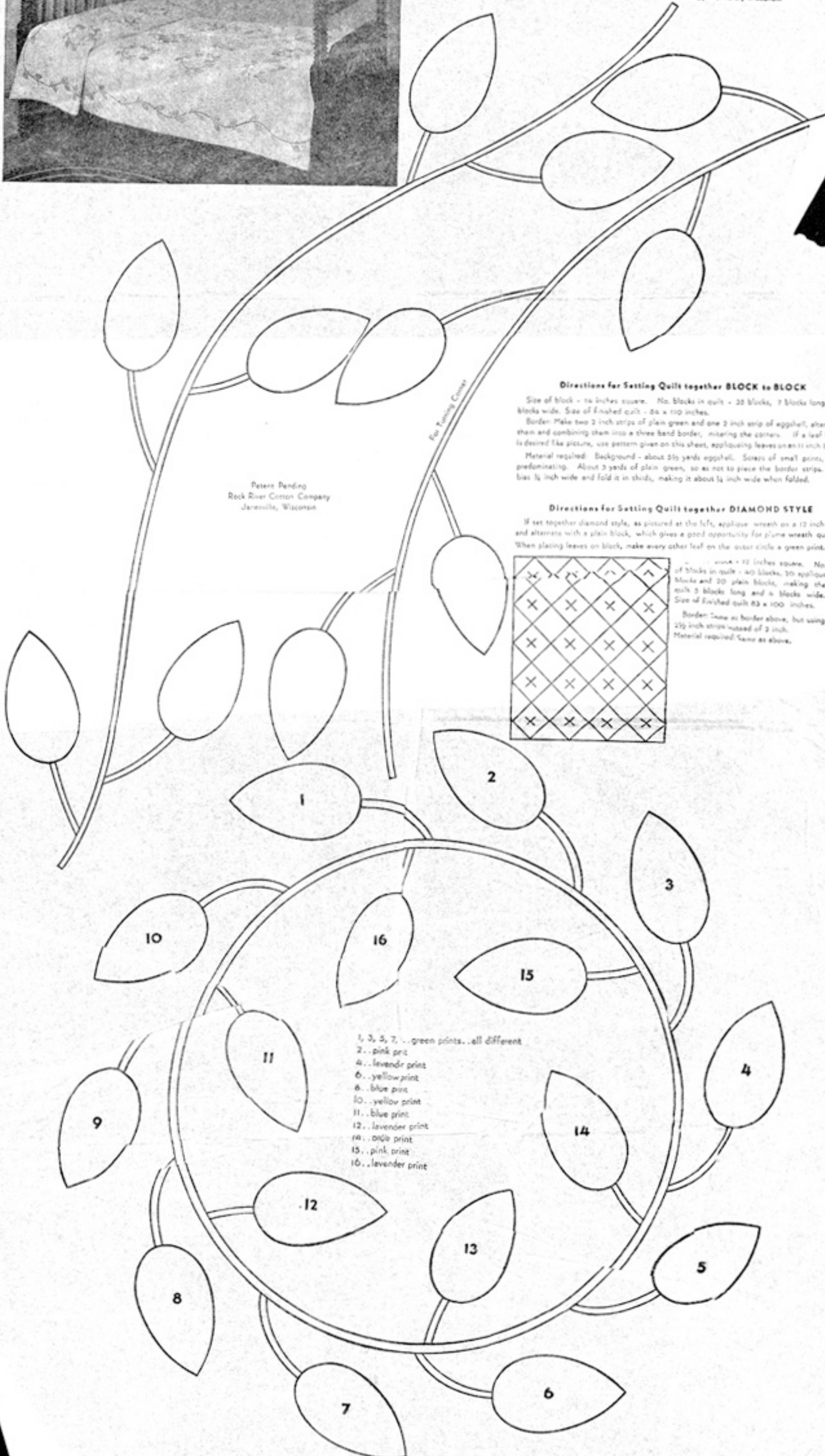


WREATH of LEAVES

Pattern furnished through courtesy of the Mary A. Mc Elvan Quilt Shop, Wauwatese, Wisconsin



Peters Pending
Rock River Cotton Company
Janesville, Wisconsin

Directions for Setting Quilt together BLOCK to BLOCK

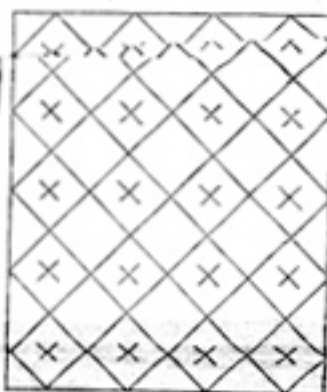
Size of block - 16 inches square. No. blocks in quilt - 20 blocks, 7 blocks long and 2 blocks wide. Size of finished quilt - 84 x 100 inches.

Border Make two 2 inch strips of plain green and one 2 inch strip of eggshell, alternating them and combining them into a three band border, mitering the corners. If a leaf border is desired like picture, use pattern given on this sheet, applying leaves on an 11 inch border.

Material required: Background - about 2 1/2 yards eggshell. Strips of small print, green predominating. About 3 yards of plain green, so as not to piece the border strips. Cut bias 1/4 inch wide and fold it in thirds, making it about 1/4 inch wide when folded.

Directions for Setting Quilt together DIAMOND STYLE

If set together diamond style, as pictured at the left, applique wreath on a 12 inch block and alternate with a plain block, which gives a good opportunity for plain wreath quilting. When placing leaves on block, make every other leaf on the outer circle a green print.



Size of block - 12 inches square. No. of blocks in quilt - 40 blocks, 20 applique blocks and 20 plain blocks, making the quilt 5 blocks long and 4 blocks wide. Size of finished quilt 60 x 100 inches.

Border Same as border above, but using 2 1/2 inch strips instead of 2 inch. Material required Same as above.

- 1, 3, 5, 7... green prints... all different
- 2... pink print
- 4... lavender print
- 6... yellow print
- 8... blue print
- 10... yellow print
- 11... blue print
- 12... lavender print
- 14... olive print
- 15... pink print
- 16... lavender print