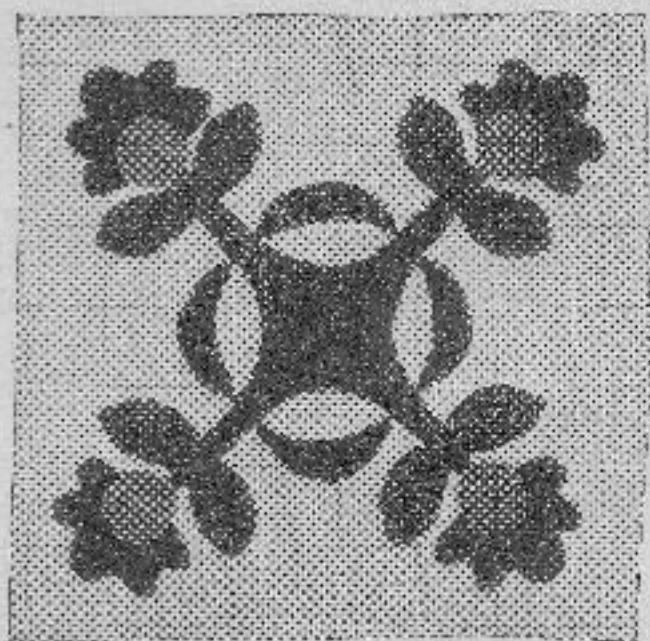


# QUAINT OLD PATCHWORK BLOCKS

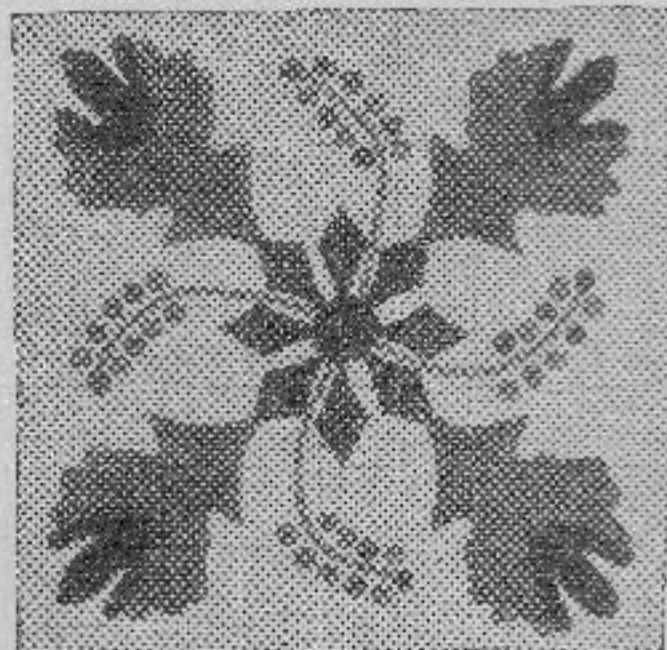
SOME DESIGNS YOUR GRANDMOTHER MAY RECOGNIZE

By IDA M. JACKSON

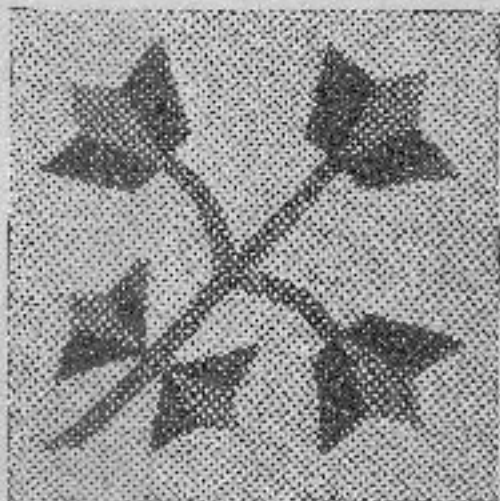
*Editor's Note.—Mrs. Jackson has spent years in collecting these rare quilt designs—dear to the eyes of our grandmothers and now equally precious to us. We shall be glad to furnish you perforated patterns of them at ten cents each. Address McColl's Magazine, New York City.*



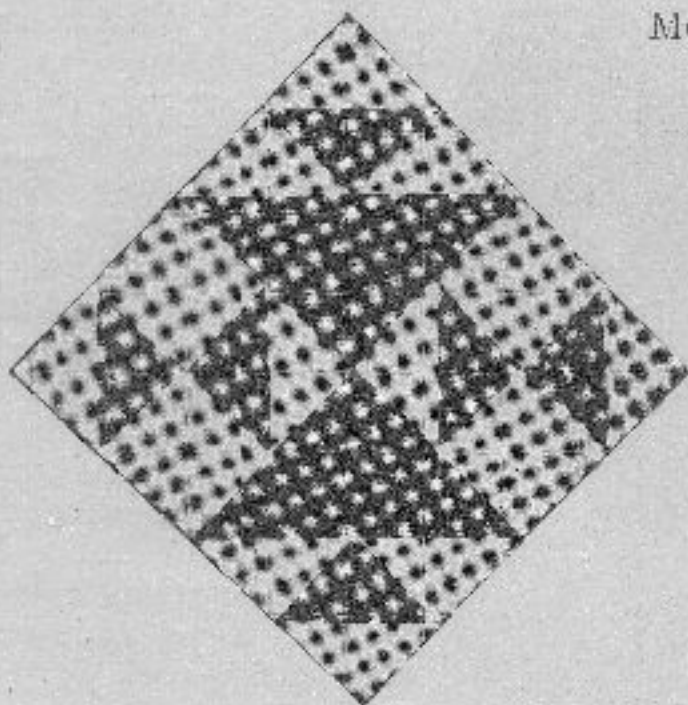
**THE HARRISON ROSE.**—This quilt is made of nine blocks, eighteen inches wide, set together with four-inch strips, and has a twelve-inch white border.



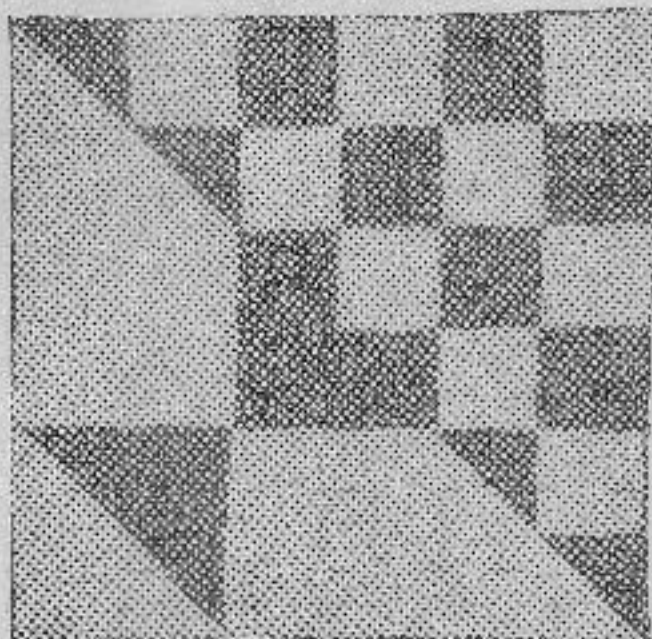
**THE CACTUS FLOWER.**—Sixteen blocks, sixteen inches square, set together with four-inch strips. White quilt border is eight inches wide.



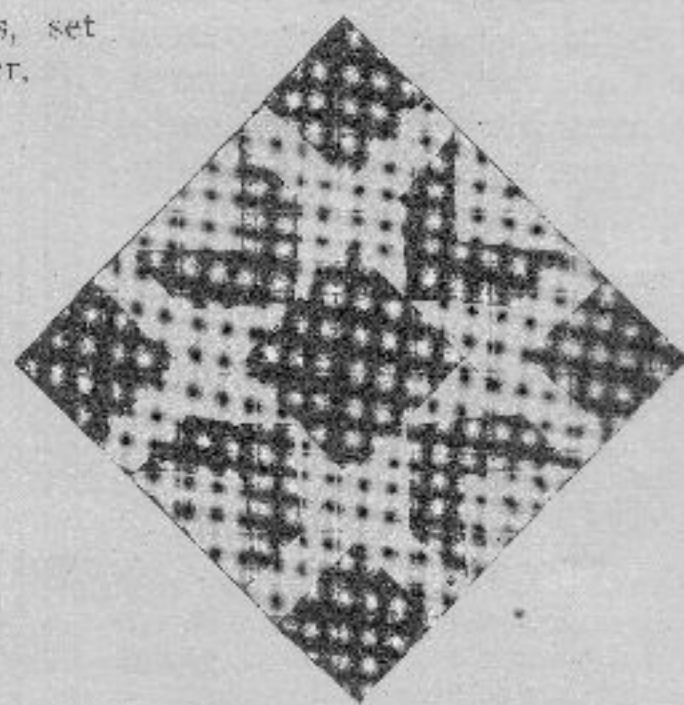
**MOUNTAIN LILY.**—Nine fifteen-inch blocks, set with white squares; ten-inch green border.



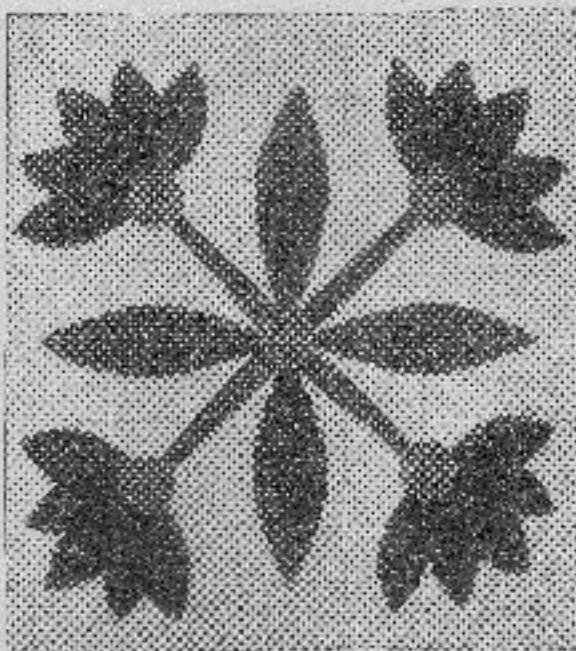
**OLD MAID'S PUZZLE.**—Forty-two blocks, ten inches square, set together with sash strips three inches wide. Quilt has five-inch white border.



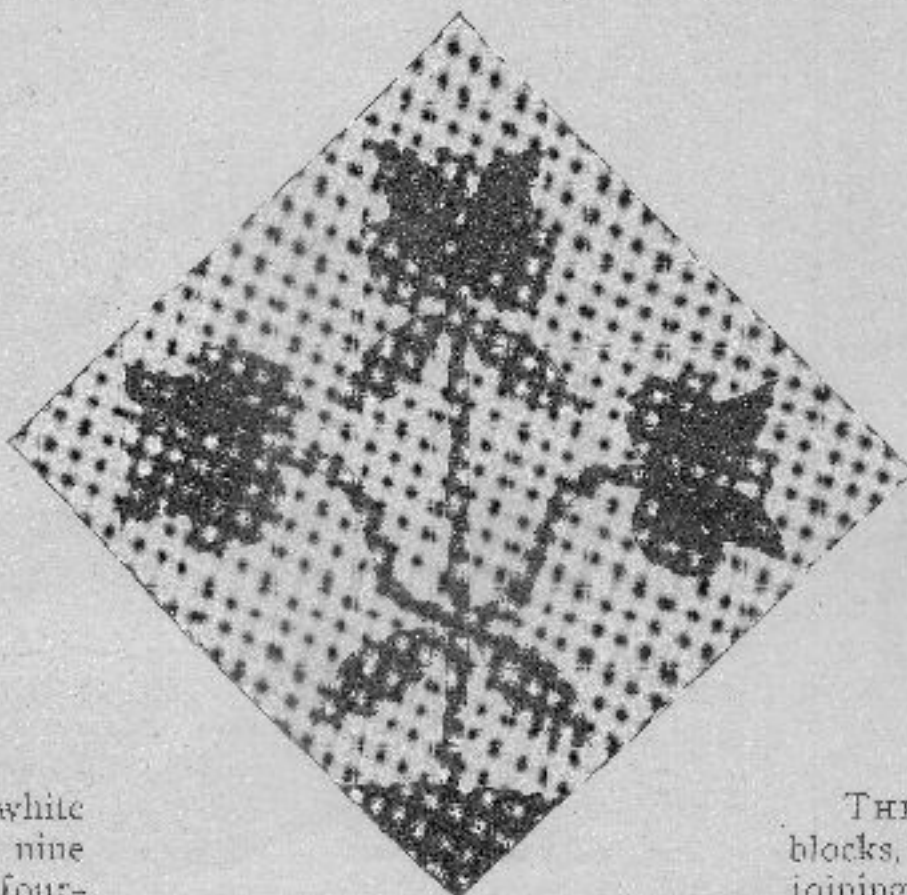
**STRAWBERRY BASKET.**—Thirty ten-and-a-half-inch blocks, set diagonally with white squares; pink border.



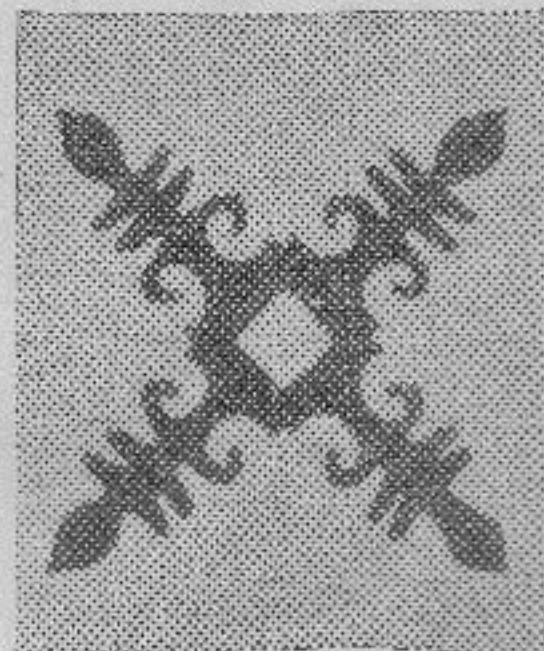
**THE MORNING STAR.**—Thirty blocks, set square, joined by three-inch white strips, and finished with a four-inch white border.



**MEXICAN ROSE.**—A twelve-inch white border, bound with green, encloses nine blocks, eighteen inches square, with four-inch sash strips.



RARE OLD TULIP PATTERNS.



**THE INDIANA BEAUTY.**—Forty-two blocks, set together without any other joinings. Around the quilt is a white five-inch border, bound with red.